

Landscape Character Assessment and Landscape and Visual Impact Assessment of Proposed National Roads

Tony Williams

Transport Infrastructure Ireland

TII Standards Training 2021

16th April 2021

European Landscape Convention

- The true spirit of the European Landscape is that there are no boundaries....especially administrative boundaries which are not (usually) visible
- lines do not really exist in the landscape.
- But do exist in our agreements, laws, wayleaves and our permission to build infrastructure
- Managing this balance between the local sense of place and the overall scheme of our infrastructure can and does benefit from both local knowledge and on the requirements of the scheme being planned, implemented or managed.

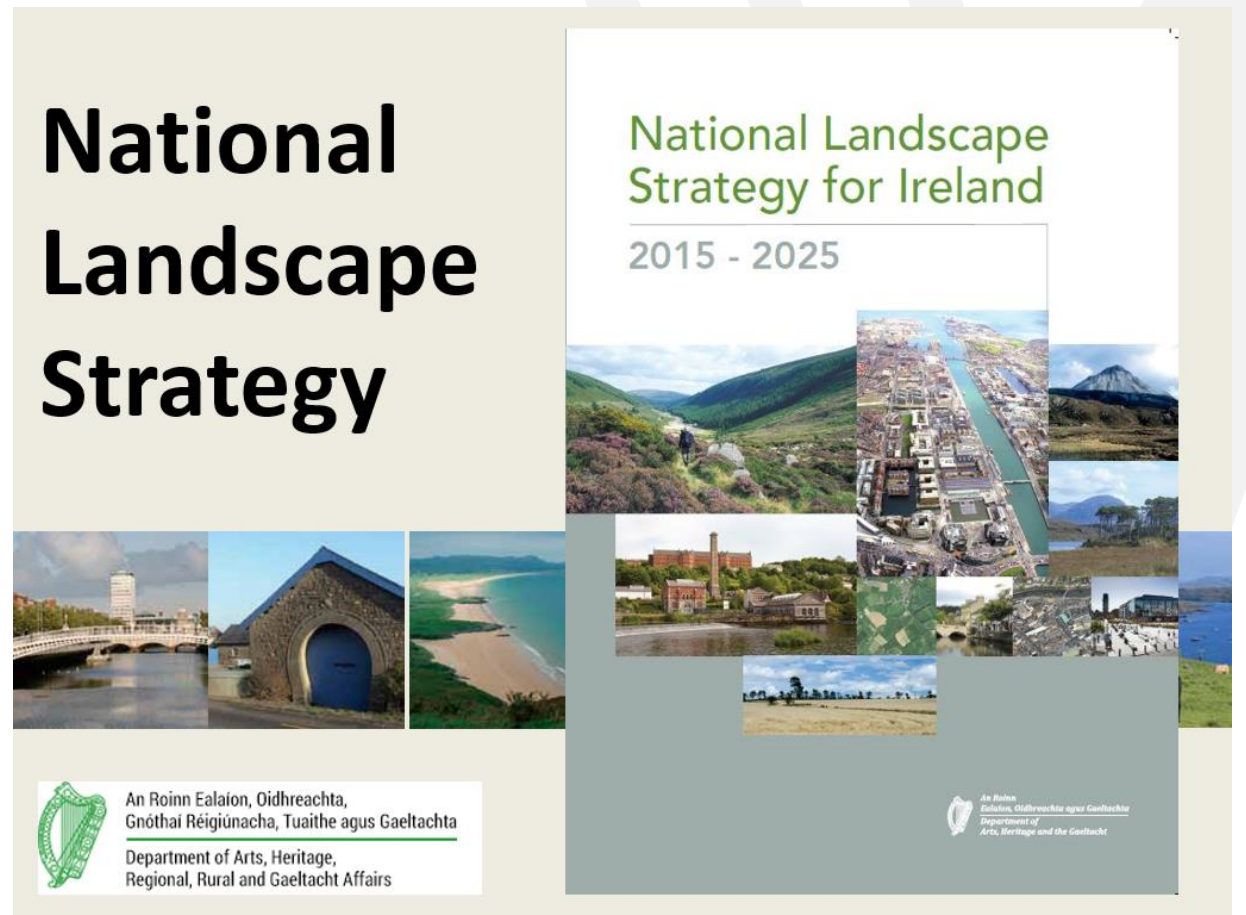


National Landscape Strategy 2015 to 2025 (The National Context)

The development of the strategy was in response to the European Landscape Convention

Implementation began and a National Landscape Strategy Steering Group (NLSSG) was established in 2016 and included Gov. departments, state agencies. NGOs and Professional Institutes.

The development of the standards for TII are to ensure compliance with the strategy and promotes best practice in landscape assessment, reporting and ongoing monitoring,



National Landscape Character Assessment

Action 2 (i) A data framework on a national GIS platform to provide the structure for on-going collection, monitoring and review of the landscape's physical, scientific and cultural data. It will reflect existing environmental classifications and national and local initiatives on land-cover and land-use habitat mapping. It will set out objective, consistent descriptions and interpret all elements and characteristics of Ireland's landscape types and areas within a standardised format.

(ii) A National Landscape Character Map will be prepared using the evidence base to describe and assess distinct landscape character areas at the national scale, ensuring consistency within and between public authority areas and functions. The database and associated maps, incorporating linked, open and online data, will use Landscape Character Assessment methodology along with other appropriate methodologies and will incorporate an outline Historic Landscape Characterisation.



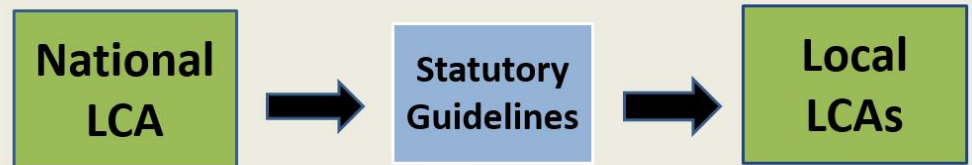
National Landscape Character Assessment

A National Landscape Strategy Steering Group (NLS SG) (of which TII is a member) plan to deliver the National Landscape Character Mapping as part of the implementation of the European Landscape Convention, the National Landscape Strategy and as part of our commitment to sustainable and well planned public transport projects.

Landscape Character Analysis

A means of drawing together objective information about the many layers in landscape - physical and cultural

Assesses how the landscape is sensitive to change for natural and cultural causes (economic, social and physical processes)



Purpose of the Standards – To ensure a consistency of approach (methodologies) and of the output and presentation of the LVIA

Definitions

Technical Document (PE-ENV-01101)

An explanation of the underlying theories and concepts of Landscape Character Assessment (LCA) and the analysis of the effect of a development on the LCA.(Advisory)

Standards Document (PE-ENV-01102) on the application of the methodologies to the assessment and reporting of landscape impacts on national roads projects. (Mandatory)

Landscape Character Assessment (LCA) and Landscape and Visual Impact Assessment (LVIA) of Specified Infrastructure Projects - Overarching Technical Document

PE-ENV-01101
December 2020

PE Planning & Evaluation

Technical

Landscape Character Assessment (LCA) and Landscape and Visual Impact Assessment (LVIA) of Proposed National Roads - Standard

PE-ENV-01102
December 2020

PE Planning & Evaluation

Standards

Technical Document

(PE-ENV-01101)

An explanation of the underlying theories and concepts of Landscape Character Assessment (LCA) and the analysis of the effect of a development on the LCA.

This effect is essentially measured and reported on in the LVIA process.

(Advisory)

Landscape Character Assessment (LCA) and Landscape and Visual Impact Assessment (LVIA) of Specified Infrastructure Projects - Overarching Technical Document

PE-ENV-01101
December 2020

This “*Overarching Technical Document*” (OTD) **PE-ENV-01101**, provides guidance on the methodology, scope and processes underlying Landscape and Visual Impact Assessment (LVIA) for Specified Infrastructure Projects.

The document promotes the use of Landscape Character Assessment (LCA) for the description, understanding, and evaluation of the receiving landscape environment. As detailed in the document, the LCA is refined to provide the specific baseline for the LVIA and comparison of selected project options and following selection of a preferred project option, the LCA is further refined to provide for the description of the receiving landscape and for the LVIA of the proposed development. Finally, the LCA provides the context for the development of clearly-defined measures, focused on existing landscape characteristics, to mitigate identified significant adverse landscape and visual effects.

Landscape Character Assessment
(LCA) and Landscape and Visual
Impact Assessment (LVIA) of
Specified Infrastructure Projects -
Overarching Technical Document

PE-ENV-01101
December 2020

The Landscape Character Assessment process in this document builds on existing city and county-level LCAs, but acknowledges that significant variation in approach, detail, and quality exists in these assessments. Therefore, the proposed process introduces detailed desk studies and field studies to review, verify and augment (but not replace) the LCAs, in order to establish an appropriately detailed and consistent LCA for the overall project study area - one that is also proportional to the nature and scale of the project.

Landscape Character Assessment
(LCA) and Landscape and Visual
Impact Assessment (LVIA) of
Specified Infrastructure Projects -
Overarching Technical Document

PE-ENV-01101
December 2020

Standards Document

(PE-ENV-01102)

on the application of the methodologies to the assessment and reporting of landscape impacts on national roads project

(Mandatory)

Landscape Character Assessment (LCA) and Landscape and Visual Impact Assessment (LVIA) of Proposed National Roads - Standard

PE-ENV-01102
December 2020

Landscape Character Assessment (LCA) and Landscape and Visual Impact Assessment (LVIA) of Proposed National Roads - Standard

PE-ENV-01102
December 2020

PE Planning & Evaluation

Standards

1.2 Using this Standard

This Standards Document (SD) **PE-ENV-01102**, sets out the methodology for the analysis and the production of documents and deliverables in terms of

- Landscape Character Assessment (LCA) in the establishment of the landscape baseline for proposed national roads
- Landscape and Visual Impact Assessment (LVIA) of proposed routes and projects

as they relate to National Roads and associated infrastructure. Subject to the overriding requirements in Section 1.8 Implementation, this standard shall be used on all projects in relation to national roads development and motorways (including motorway service areas and toll schemes) and any associated infrastructure.

The methodology outlined in this standard and the theory of Landscape Character Assessment (LCA) and Landscape and Visual Impact Assessment (LVIA) are presented in an “*Overarching Technical Document*” (OTD) **PE-ENV-01101** and this standard shall be read in conjunction with same.

Landscape Character Assessment (LCA) and Landscape and Visual Impact Assessment (LVIA) of Proposed National Roads - Standard

PE-ENV-01102
December 2020

PE Planning & Evaluation

Standards

- Outline the application of LVIA during the planning, assessment and design stages for proposed national road projects, motorway service areas toll schemes, and any associated infrastructure.
- Outline the review process of existing LCAs within the proposed study areas when available, and the application and implementation of LCA in order to ensure appropriate evaluation and analysis of the baseline or receiving landscape within which a national road project is being planned.
- Apply LCA and LVIA in a manner that is proportionate to the complexity, scale, and likely significance of landscape and visual effects of a national road project.
- Provide consistency to the consideration of LCA and LVIA during the planning, selection, design, assessment, and delivery phases of a national road project as set out in TII's Project Management Guidelines (PMG), Project Manager's Manual for Major National Roads (PMM) and Project Appraisal Guidelines (PAG).
- Assist proposed national road projects achieve good assessment, design, and construction regardless of legislative requirements, with ecological fit, enhancement of the landscape, and experience of the road user.

Thank You

