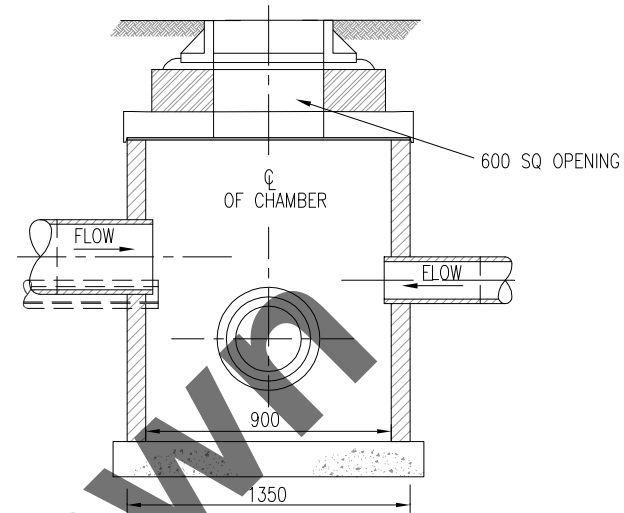
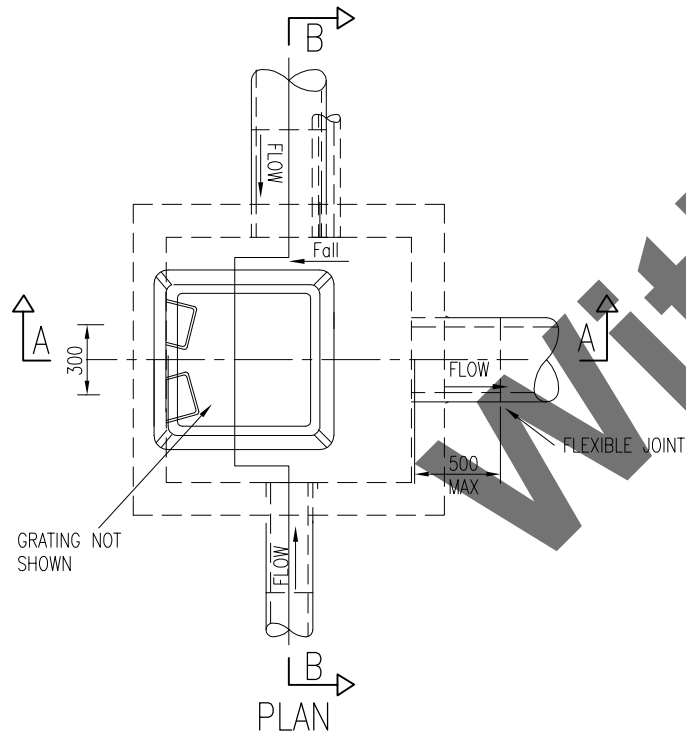


SECTION A-A



SECTION B-B



PLAN

NOTES:

1. ALL DIMENSIONS ARE IN MILLIMETRES EXCEPT WHERE STATED.
2. CATCHPIT TO BE CONSTRUCTED IN 21N CONCRETE BLOCKS TO I.S. 20, COLOURED BLACK, WITH DESIGNATION 1 MORTAR AND TO SERIES 2400 OR IN-SITU MIX. ST4 CONCRETE OR PRECAST CONCRETE TO IS EN 1917 & BS 5911-3.
3. FOR INVERT DETAILS, NUMBER OF BRANCHES, DETAILS OF PIPES AND TYPE OF GRATING COVER AND FRAME SEE THE DRAINAGE SCHEDULE.
4. MORTAR TO BE TO CLAUSE 507.17.
5. PIPE TO BE BUILT INTO CATCHPIT TO DRAIN LOWER PORTION OF TRENCH. PIPE IS TO BE PLACED ABOVE ANY CONCRETE BED TO FILTER DRAIN.
6. THE GRATING AND COVER IS TO BE AS DIMENSIONED BELOW THE ADJACENT EDGE OF PAVEMENT WHERE PLACED IN THE VERGE OR MEDIAN. SET AT FINISHED LEVEL ALL OTHER LOCATIONS.
7. MAXIMUM PIPE DIAMETER PERMITTED IS 450mm MAXIMUM DEPTH PERMITTED IS 1.35m PLUS PIPE DIAMETER.
8. 1050mm INTERNAL DIAMETER PRECAST CONCRETE RINGS MAY BE USED AS AN ALTERNATIVE TO CONCRETE BLOCKS. THE CATCHPIT SHOULD BE BUILT AS DRAWING No RCD/500/34

MAX PIPE DIAMETER 450
MAX DEPTH 1.35m

NOT TO SCALE

P4	04/11
P3	01/09
P2	10/07
Issue	Date