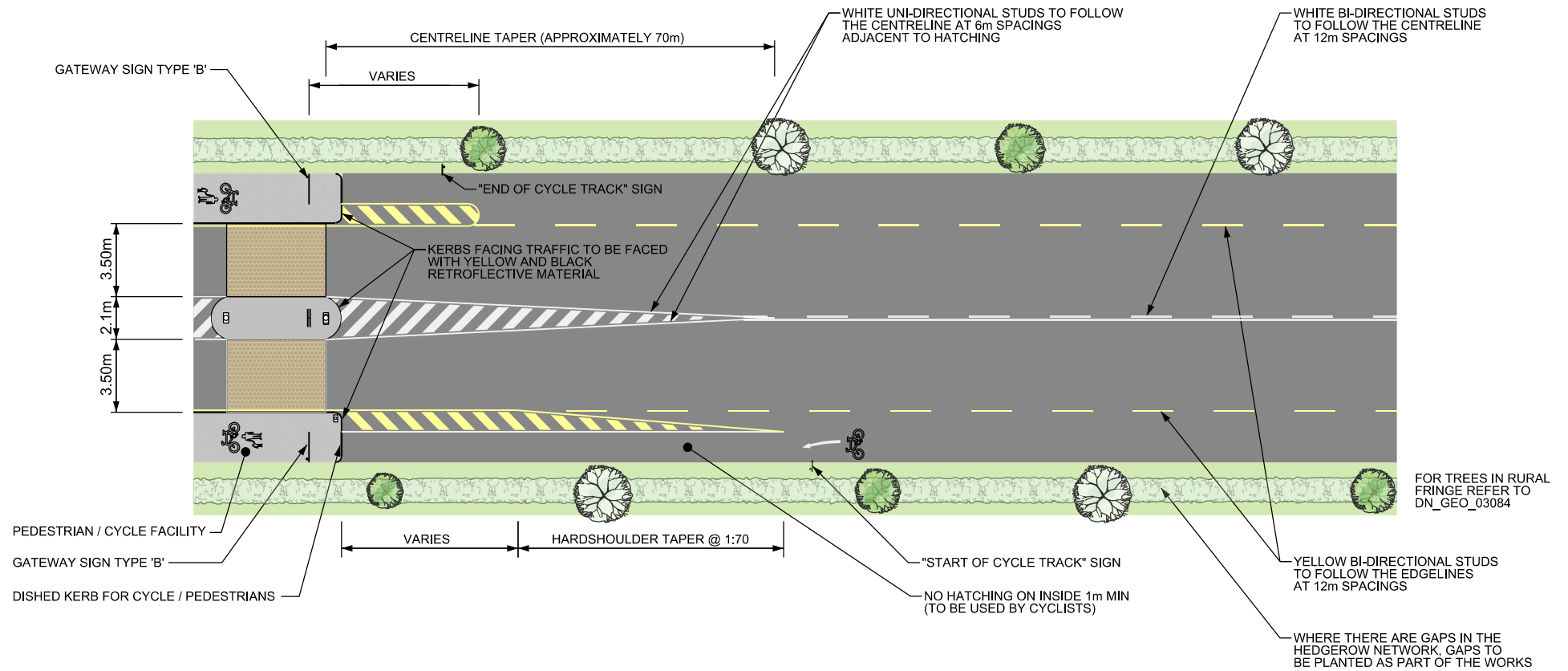


TRANSITION ZONE 

RURAL FRINGE








FOR TREES IN RURAL FRINGE REFER TO DN_GEO_03084

NOTES:

1. ALL LIGHTING SHALL BE IN ACCORDANCE WITH THE TII LIGHTING STANDARD DN_LHT_03038.
2. ALL PUBLIC LIGHTING COLUMNS OUTSIDE GATEWAY TO CONFORM TO EN-12767.
3. SEE CC-SCD-05121 AND CC-SCD-05122 FOR DETAILS OF SIGNS FOR GATEWAY TYPE B.
4. SEE CC-SCD-05116 FOR FURTHER DETAILS OF POSITIONING OF RURAL FRINGE SIGNS.
5. WHEN SPECIFYING TRESS ENSURE CLEAR STEM HEIGHT OF 2.5m SO THEY DO NOT IMPACT ON PEDESTRIAN OR CYCLIST HEAD ROOM.

LEGEND:

-  CARRIAGEWAY
-  SHARED CYCLE / PEDESTRIAN FACILITY
-  EXISTING / RETAINED TREE
-  PROPOSED TREE
-  EXISTING HEDGING



ACTIVITY



PUBLICATION TITLE

PLAN OF ROAD ON APPROACH TO GATEWAY: TYPE B DESIGN

STREAM

STANDARD CONSTRUCTION DETAILS (SCD)

HISTORICAL REFERENCE

N/A

DOCUMENTATION SET

STANDARDS

PUBLICATION DATE

JULY 2021

PUBLICATION NUMBER

CC SCD 05103