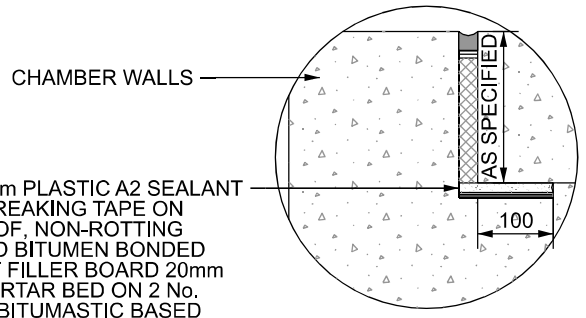
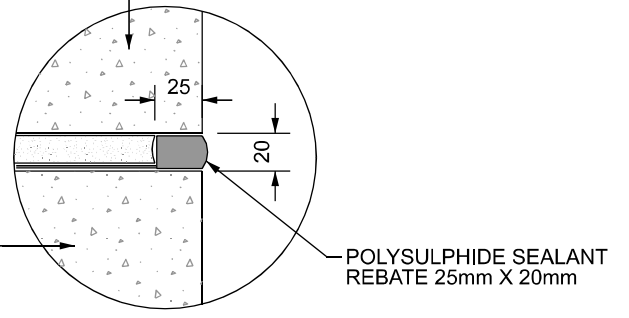


PRECAST CONCRETE ROOF SLAB
 BEDDED ON 20mm CLASS 1
 MORTAR BED ON 2 No. LAYERS OF
 BITUMASTIC BASED HESSIAN
 TYPE D.P.C. LAID BREAKING JOINT



25mm X 25mm PLASTIC A2 SEALANT
 ON BOND BREAKING TAPE ON
 WATERPROOF, NON-ROTting
 PERFORMED BITUMEN BONDED
 CORK JOINT FILLER BOARD 20mm
 CLASS 1 MORTAR BED ON 2 No.
 LAYERS OF BITUMASTIC BASED
 HESSIAN TYPE D.P.C. LAID
 BREAKING JOINT.

JOINT A

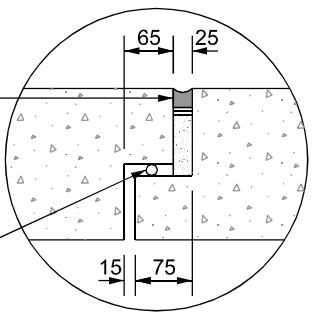


CHAMBER WALLS
 POLYSULPHIDE SEALANT
 REBATE 25mm X 20mm

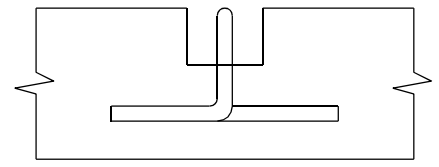
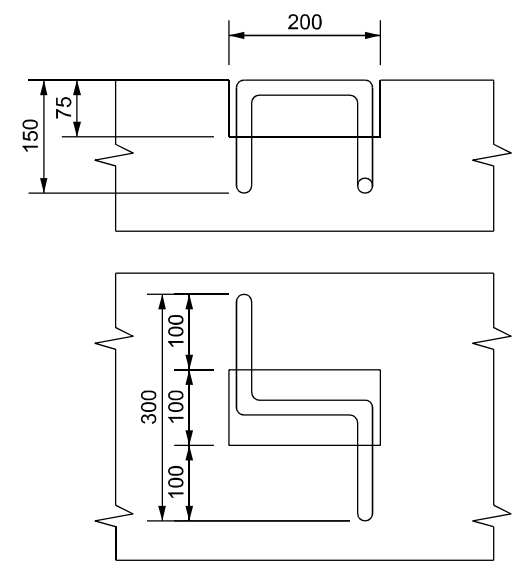
JOINT C

25mm X 25mm PLASTIC A2 SEALANT
 ON BOND BREAKING TAPE ON
 WATERPROOF, NON-ROTting
 PERFORMED BITUMEN BONDED
 CORK JOINT FILLER BOARD

19mm Ø PREFORMED SELF
 ADHESIVE NEOPRENE SEAL



JOINT B



200mm X 100mm X 75mm DEEP
 POCKET IN ROOF SLAB

20mm Ø MILD STEEL BARS
 BENT AS SHOWN AND HOT
 DIPPED GALVANISED TO
 EN ISO 1461

LIFTING HANDLE DETAILS



PUBLICATION TITLE
 WATERMAIN
 JOINTS AND LIFTING HANDLE

ACTIVITY	PUBLICATION TITLE			PUBLICATION NUMBER		
STREAM	HISTORICAL REFERENCE	DOCUMENTATION SET	PUBLICATION DATE	ACTIVITY	STREAM	DRAWING NUMBER
STANDARD CONSTRUCTION DETAILS (SCD)	RCD/2700/11	STANDARD	MARCH 2011	CC	SCD	02711