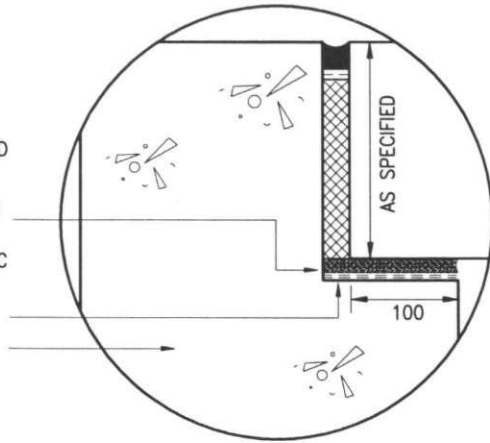


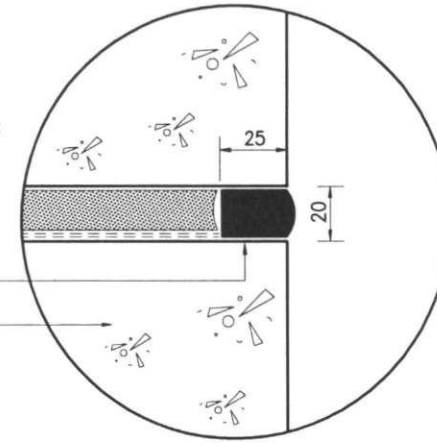
25MM X 25MM  
PLIASTIC A2 SEALANT  
ON  
BOND BREAKING TAPE  
ON  
WATERPROOF, NON-ROTTING  
PREFORMED BITUMEN BONDED  
CORK JOINT FILLER BOARD  
20MM CLASS 1 MORTAR BED  
ON  
2 NO. LAYERS OF BITUMASTIC  
BASED HESSIAN TYPE D.P.C.  
LAID BREAKING JOINT.  
CHAMBER WALLS



JOINT A

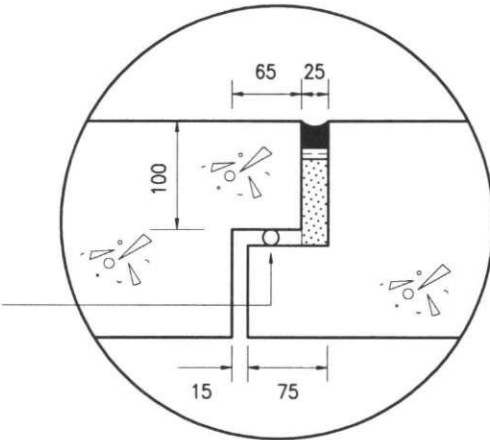
PRE-CAST CONCRETE  
ROOF SLAB BEDDED  
ON  
20MM CLASS 1 MORTAR BED  
ON  
2 NO. LAYERS OF BITUMASTIC  
BASED HESSIAN TYPE D.P.C.  
LAID BREAKING JOINT.

POLYSULPHIDE SEALANT  
REBATE 25MM X 20MM  
CHAMBER WALLS

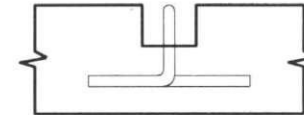
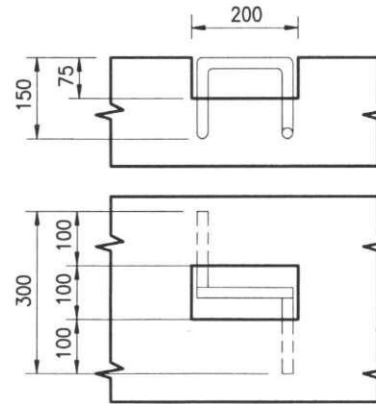


JOINT C

25MM X 25MM  
PLIASTIC A2 SEALANT  
ON  
BOND BREAKING TAPE  
ON  
WATERPROOF, NON-ROTTING  
PREFORMED BITUMEN BONDED  
CORK JOINT FILLER BOARD  
19MM Ø PREFORMED SELF  
ADHESIVE NEOPRENE SEAL



JOINT B



200MM X 100MM X 75MM DEEP  
POCKET IN ROOF SLAB.

20MM DIA. MILD STEEL  
BARS BENT AS SHOWN AND.  
HOT DIPPED GALVANIZED  
TO EN ISO 1461.

LIFTING HANDLE DETAILS