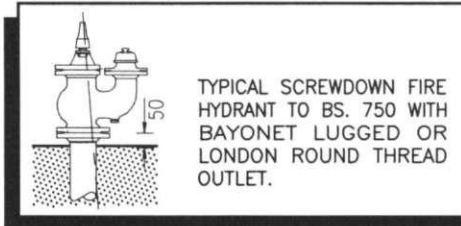


## HYDRANT CHAMBER FITTING



NOMINAL MAXIMUM DISTANCE BETWEEN GROUND LEVEL AND TOP OF FITTING - 500MM

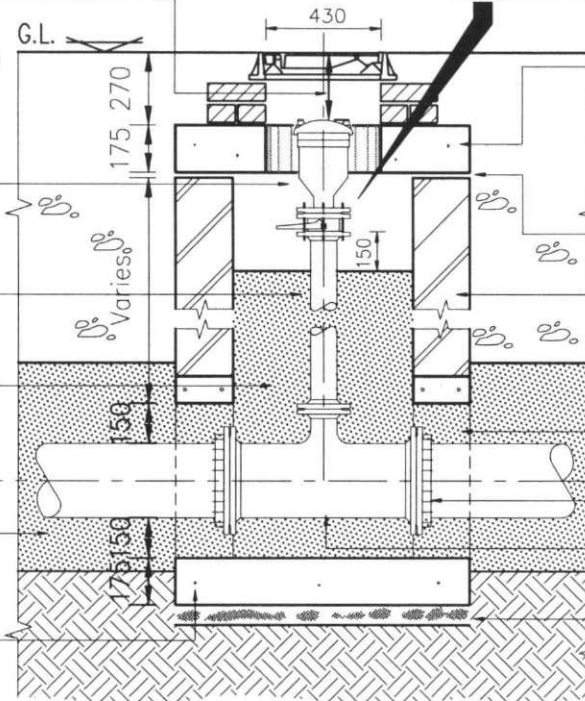
80MM DOUBLE AIR VALVE WITH ISOLATING BUTTERFLY VALVE COMPLETE WITH TAPPED RETAINING FLANGE AND STUD BOLTS

80MM Ø ALL FLANGED DUCTILE IRON SPACER PIPE IN STANDARD LENGTHS TO SUIT ON-SITE DIMENSIONS

TYPE A GRANULAR FILL TO 300MM OVER CROWN OF PIPE AND TO 150MM BELOW BASE OF AIR VALVE FITTING WITHIN CHAMBER

200MM DEPTH OF GRANULAR MATERIAL AS PIPE BEDDING

175mm ST4 CONCRETE FLOOR SLAB, WITH A393 MESH REINFORCEMENT.



175MM PRE-CAST CONCRETE ROOF IN CLASS 30/20 CONCRETE WITH CLEAR OPE OF 450MM X 300MM.

ROOF SLAB BEDDING IN CLASS 1 MORTAR 20MM THICK.

440MM X 215MM X 100MM CONCRETE BLOCKS LAID FLAT IN CHAMBER WALLS

CLEAR OPE IN BLOCK WALL (OPE WIDTH = O.D. + 250MM)

FLANGED ADAPTOR

80MM Ø FLANGE OFF FLANGED TEE

75MM BLINDING

- NOTES:
1. PIPE LAYOUT AT CHAMBER AS DRAWN UNLESS SPECIFIED OTHERWISE
  2. HYDRANT SHOULD BE MARKED IN ACCORDANCE, WITH B.S. 3251 CLASS A.
  3. HYDRANT IS NOT TO BE POSITIONED IN THE ROADWAY, (SEE RCD/2700/9).

SECTION A-A (SEE DRG. NO. RCD/2700/8 FOR PLAN)