

F.G.L.

CLASS U2 FINISH TO ROOF SLAB

2 NO. SLUICE VALVES  
21N CONCRETE BLOCKWORK TO I.S. 20 COLOURED BLACK WITH DESIGNATION (I) MORTAR AND TO SERIS 2400.

GRANULAR MATERIAL

PIPE SIZE AS SPECIFIED AT LOCATION

ST4 CONCRETE FLOOR SLAB WITH CLASS U2 FINISH.

CLASS A ENGINEERING BRICK TO I.S. 91, (MIN. 2 COURSES, MAX. 5), AND TO SERIES 2400.

1 NO. 1105 X 1105mm PRECAST CONCRETE ROOF SLAB WITH A393 MESH REINFORCEMENT IN CLASS 30/20 CONCRETE BEDDED ON CLASS 1 MORTAR BED, 20mm THICK ON 215mm WIDE BITUMASTIC BASED HESSIAN DAMP PROOF COURSE.

JOINT DETAIL C RCD/2700/11

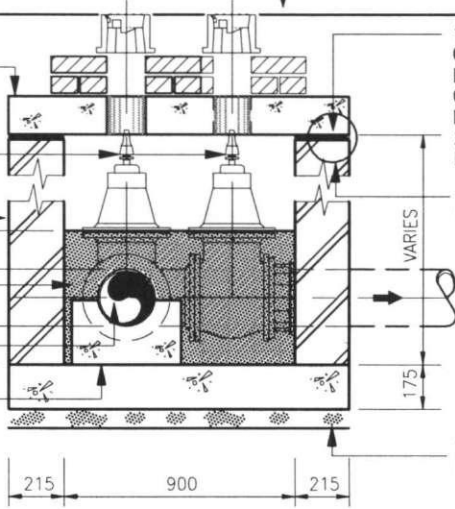
75mm ST2 CONCRETE BLINDING LAYER

2 NO. PRECAST REINFORCED CONCRETE ROOF SLABS IN CLASS 30/20 CONCRETE

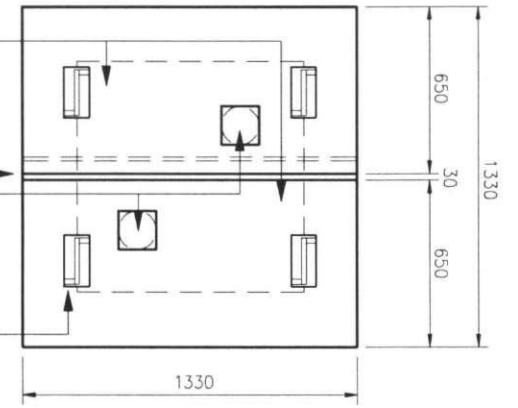
JOINT DETAIL B (REFER TO DRG. NO. RCD/2700/11

150 X 150MM OPE. FOR SLUICE VALVE (EXACT LOCATION TO BE DETERMINED ON-SITE).

LIFTING HANDLES CAST TO CONCRETE ROOF SLAB (REFER TO DRG. NO. RCD/2700/11



SECTION D-D

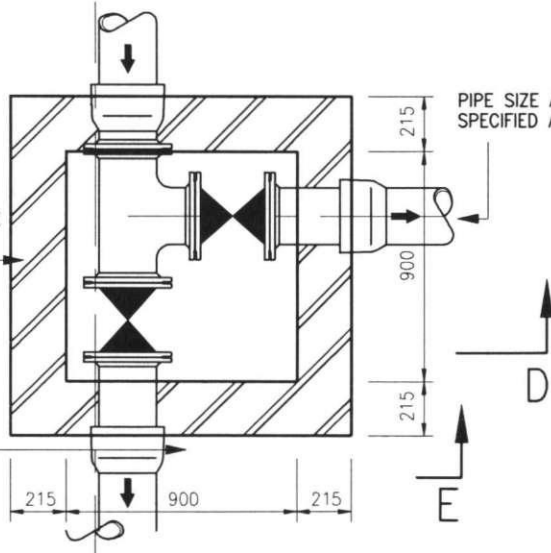


ROOF PLAN

215MM SOLID CONCRETE BLOCKWORK

PIPE SIZE AS SPECIFIED AT LOCATION

PIPE SIZE AS SPECIFIED AT LOCATION

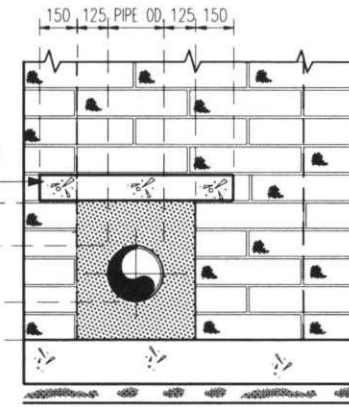


PLAN

215MM WIDE X 100MM DEEP PRE-CAST CONCRETE LINTEL OVER BOTH WALL OPEs. MINIMUM LENGTH = OPE SIZE + 300MM

CLASS 20/30 CONCRETE REINFORCED WITH 2 NO. HIGH YIELD REINFORCING BARS 12MM IN DIAMETER.

SECTION OF P.C.C. LINTEL



ELEVATION E-E

CLASS 30/20 CONCRETE IN CHAMBER FLOORS.

NOTE

CLEAR OPE IN WALL SIZE VARIES WITH MAIN PIPELINE DIAMETER.  
OPE HEIGHT = OD. + 300MM  
OPE WIDTH = OD. + 250MM

75MM BLINDING LAYER IN CLASS 15 CONCRETE