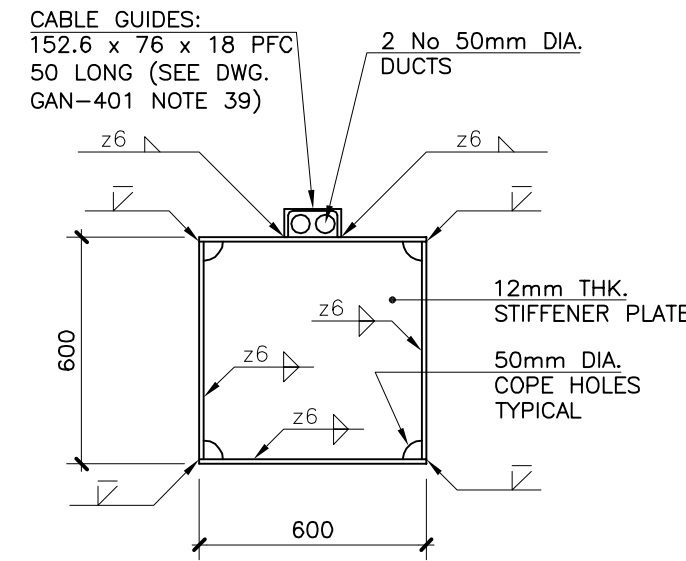
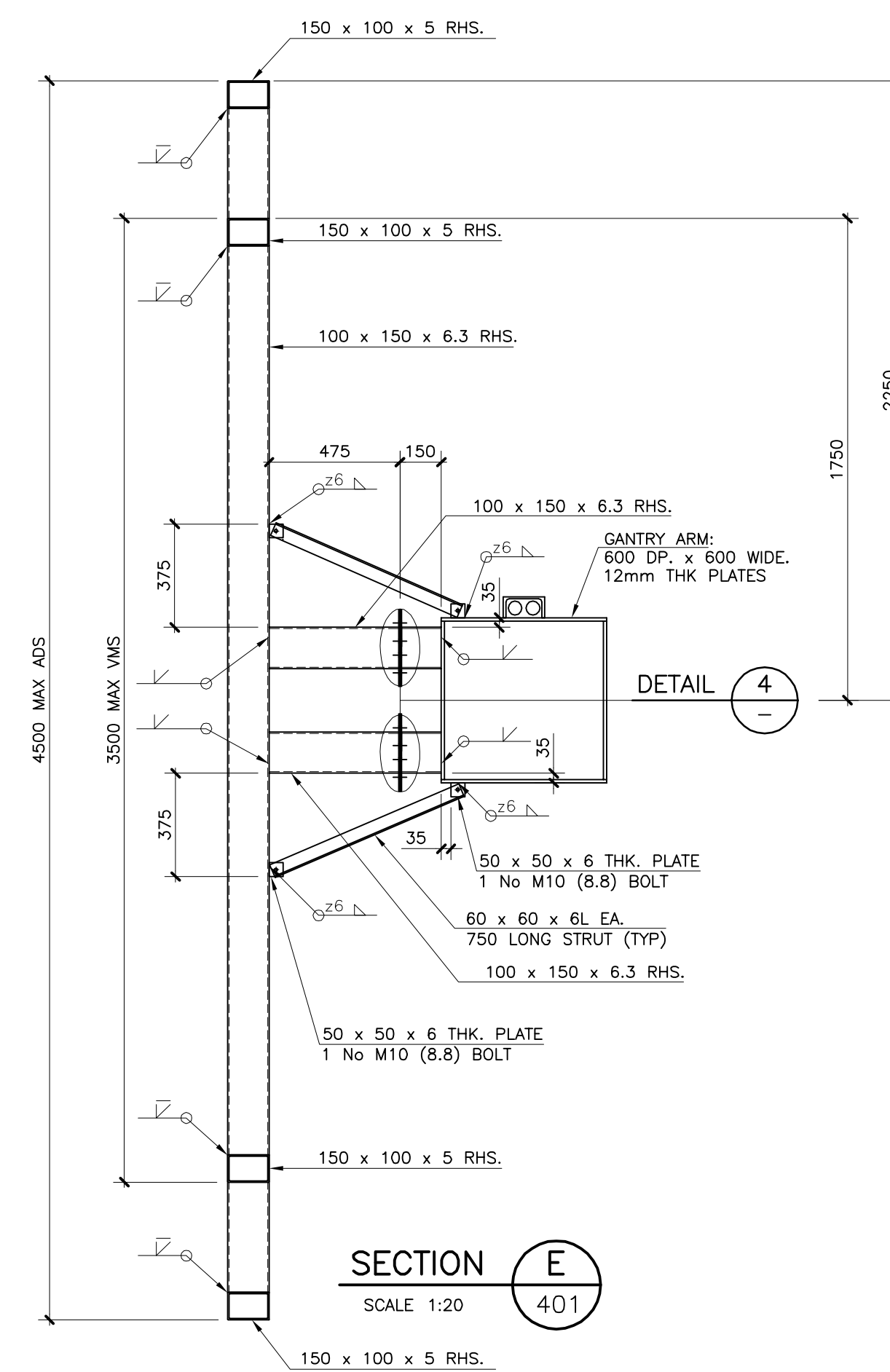


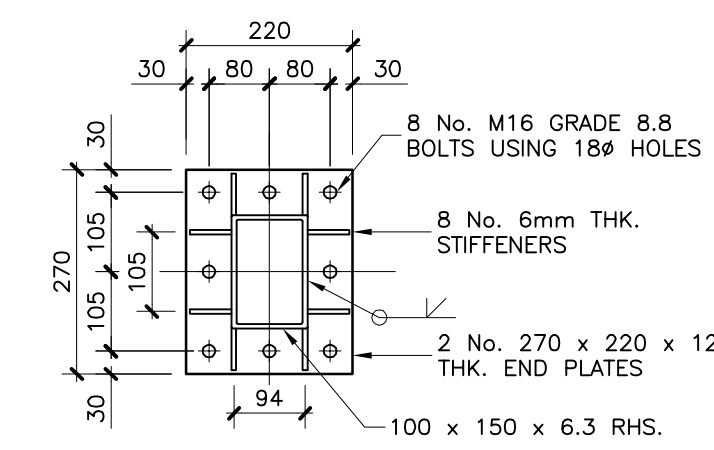
SECTION C  
SCALE 1:10  
401



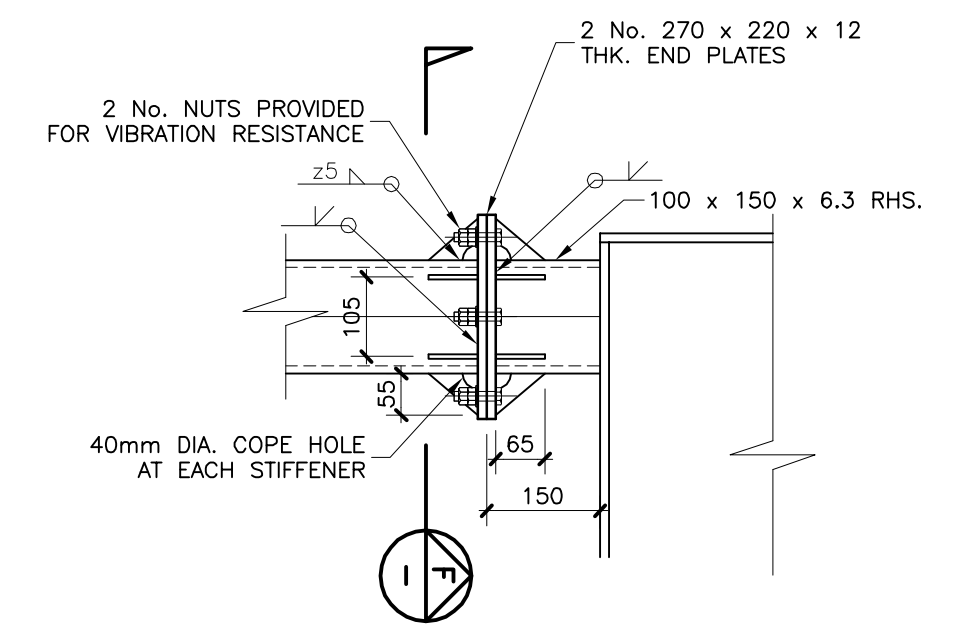
SECTION D  
SCALE 1:20  
401



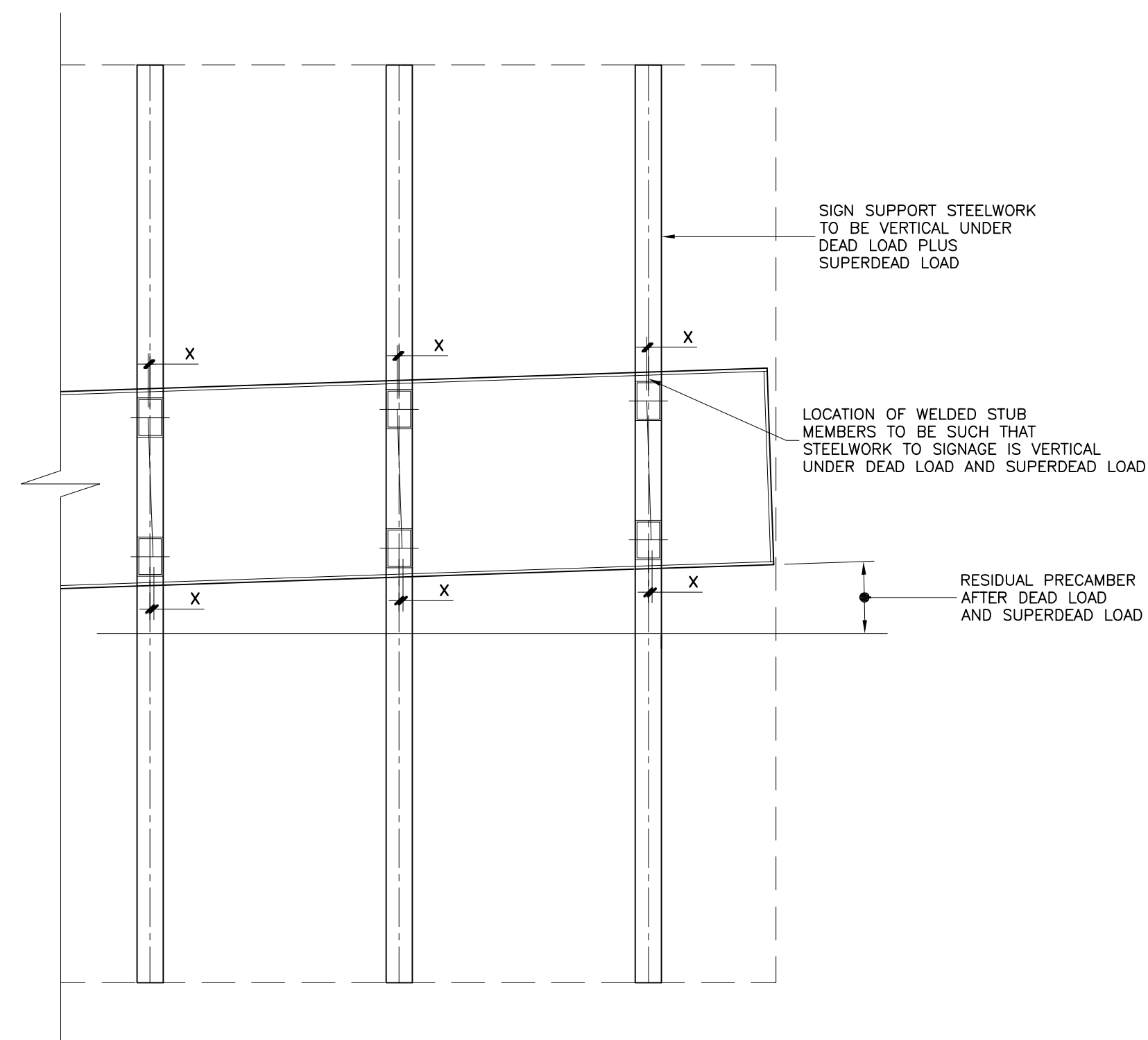
SECTION E  
SCALE 1:20  
401



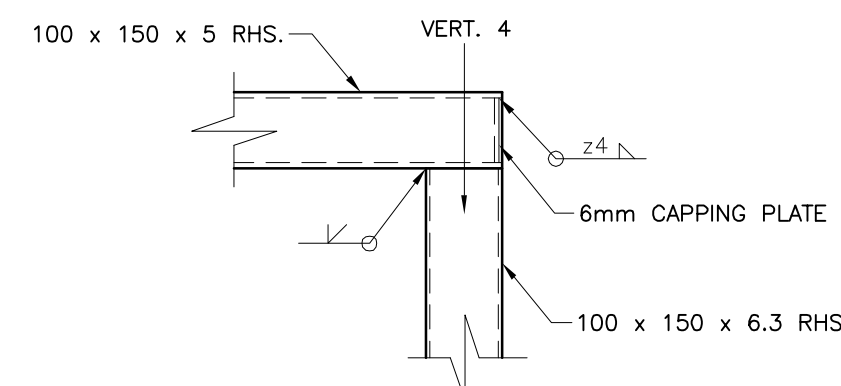
SECTION F  
SCALE 1:10  
-



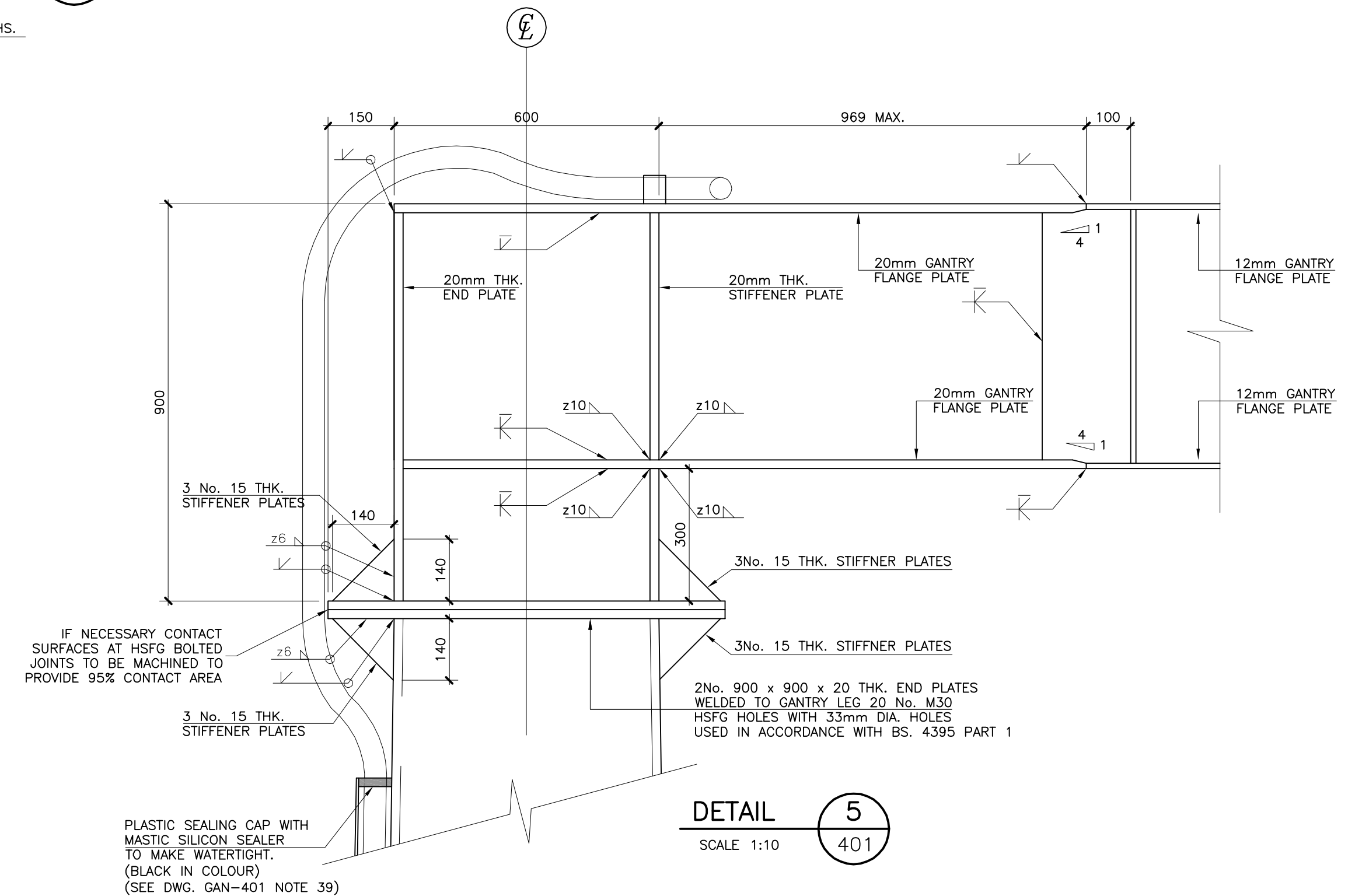
DETAIL 4  
SCALE 1:10  
-



SIGN SUPPORT STEELWORK  
SCALE 1:20



DETAIL 6  
SCALE 1:10  
401



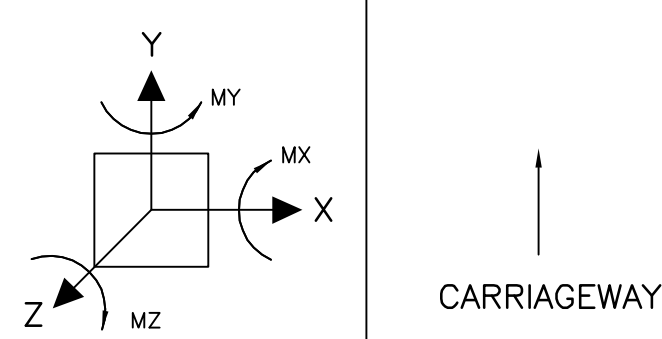
DETAIL 5  
SCALE 1:10  
401

TABLE 1: GANTRY ARM UNFACTORED DEFLECTIONS (VERTICAL) (REFER TO NOTE No. 34)

LOAD TYPE	CANTILEVER TIP DEFLECTION(mm)
DEAD	21
MIN. SUPERDEAD	4
MAX. SUPERDEAD	15
WIND-VERTICAL	12
RESIDUAL PRE-CAMBER OF CANTILEVER TIP	SPAN/150

TABLE 2: GANTRY LEGS UNFACTORED LOAD EFFECTS ON BASE (REFER TO NOTE No. 7)

LOAD TYPE	Fz AXIAL FORCE (kN)	Mx BENDING (kN.m)	My BENDING (kN.m)	Mz TORSION (kN.m)	Vx SHEAR (kN)	Vy SHEAR (kN)
DEAD	-65	-6	+138	0	0	0
MIN. SUPERDEAD	-6	-5	+44	0	0	0
MAX. SUPERDEAD	-12	-12	+93	0	0	0
WIND-TRANSVERSE	0	±506	0	±320	0	±67
WIND-LONGITUDINAL	0	0	±114	±5	±22	0
WIND-VERTICAL	±12	±5	±71	0	0	0
SNOW	-5	0	+28	0	0	0
COLLISION *	0	±372	±470	0	±250	±150



\* ALL COLLISION LOADS ARE APPLIED CONCURRENTLY

NOTES  
1) REFER TO DRAWING 401 FOR GENERAL NOTES.