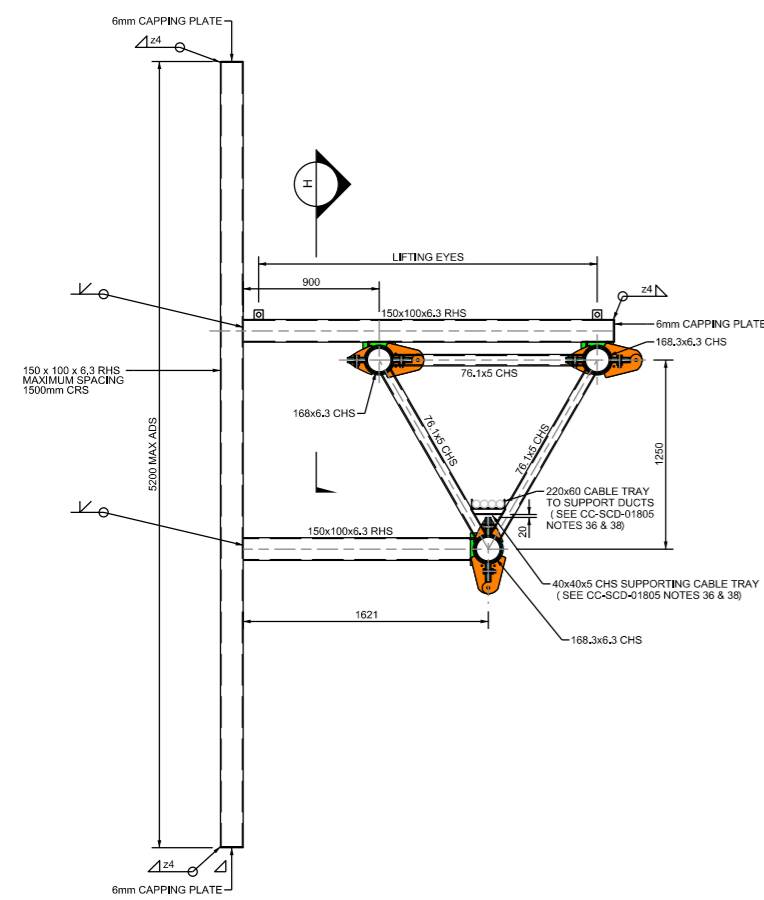
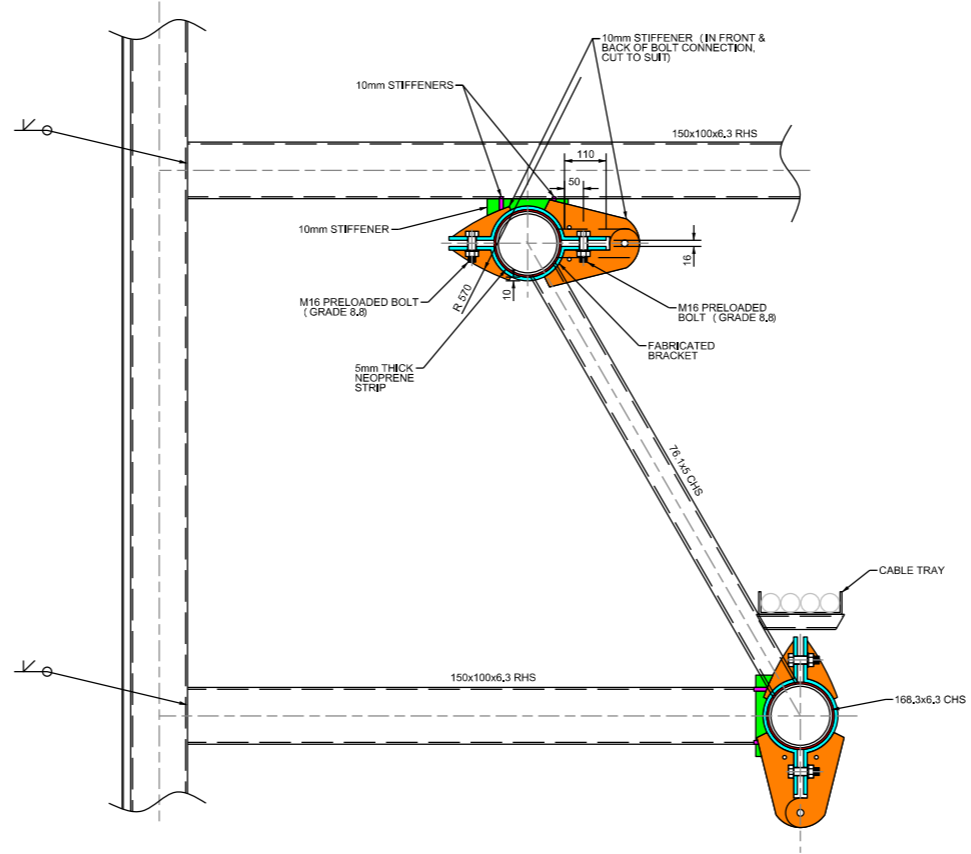


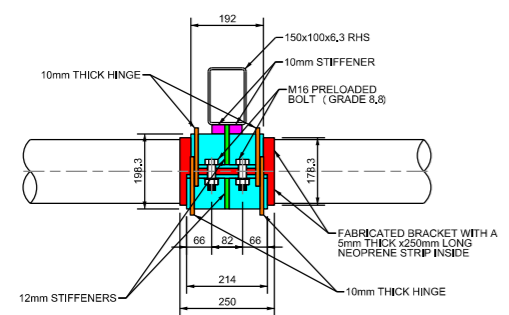
NOTES:-  
 1. FOR NOTES REFER TO CC-SCD-01805.  
 2. FOR FABRICATION OF CLAMPS, ALL WELDS TO BE 8mm MINIMUM FILLET WELDS AND CONTINUOUS, UNLESS NOTED OTHERWISE, DESIGN ENGINEER TO VERIFY.  
 3. TII TAKE NO RESPONSIBILITY FOR THE STRUCTURAL ADEQUACY OF THESE CLAMPING DETAILS. IT IS THE RESPONSIBILITY OF THE DESIGN ENGINEER TO ANALYSE, DESIGN AND DETAIL ALL ASPECT OF THE CLAMPING CONNECTION.  
 4. EACH VERTICAL MEMBER SUPPORTING SIGNS WILL REQUIRE A SET OF CLAMPS TO CONNECT TO THE GANTRY.



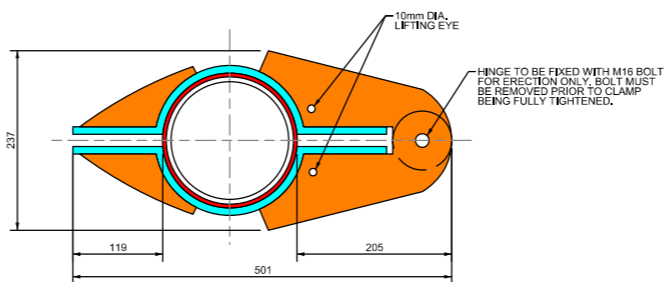
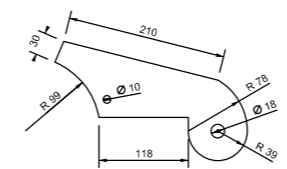
**SECTION F**  
SCALE 1:50



**BRACKET DETAIL**  
SCALE 1:20



**SECTION H**  
SCALE 1:20



**HINGE BRACKET DETAIL**  
SCALE 1:10



PUBLICATION TITLE  
**GANTRY GROUP 2**  
 DETAILS OF GANTRY GROUP 2 SHEET 3 OF 3

STREAM		SHEET	HISTORICAL REFERENCE	DOCUMENTATION SET	PUBLICATION DATE	PUBLICATION NUMBER		
STANDARD CONSTRUCTION DETAIL (SCD)		A3	RCD/1800/006	STANDARD	DECEMBER 2014	ACTIVITY	STREAM	DRAWING NUMBER
						CC	SCD	01806