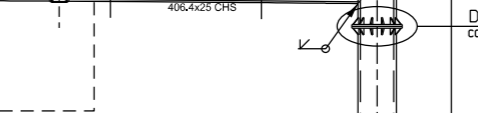
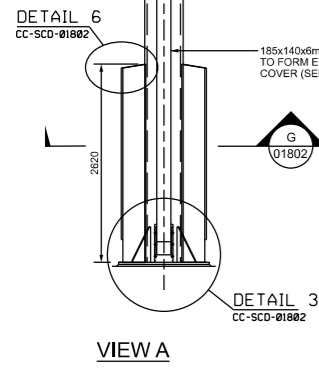
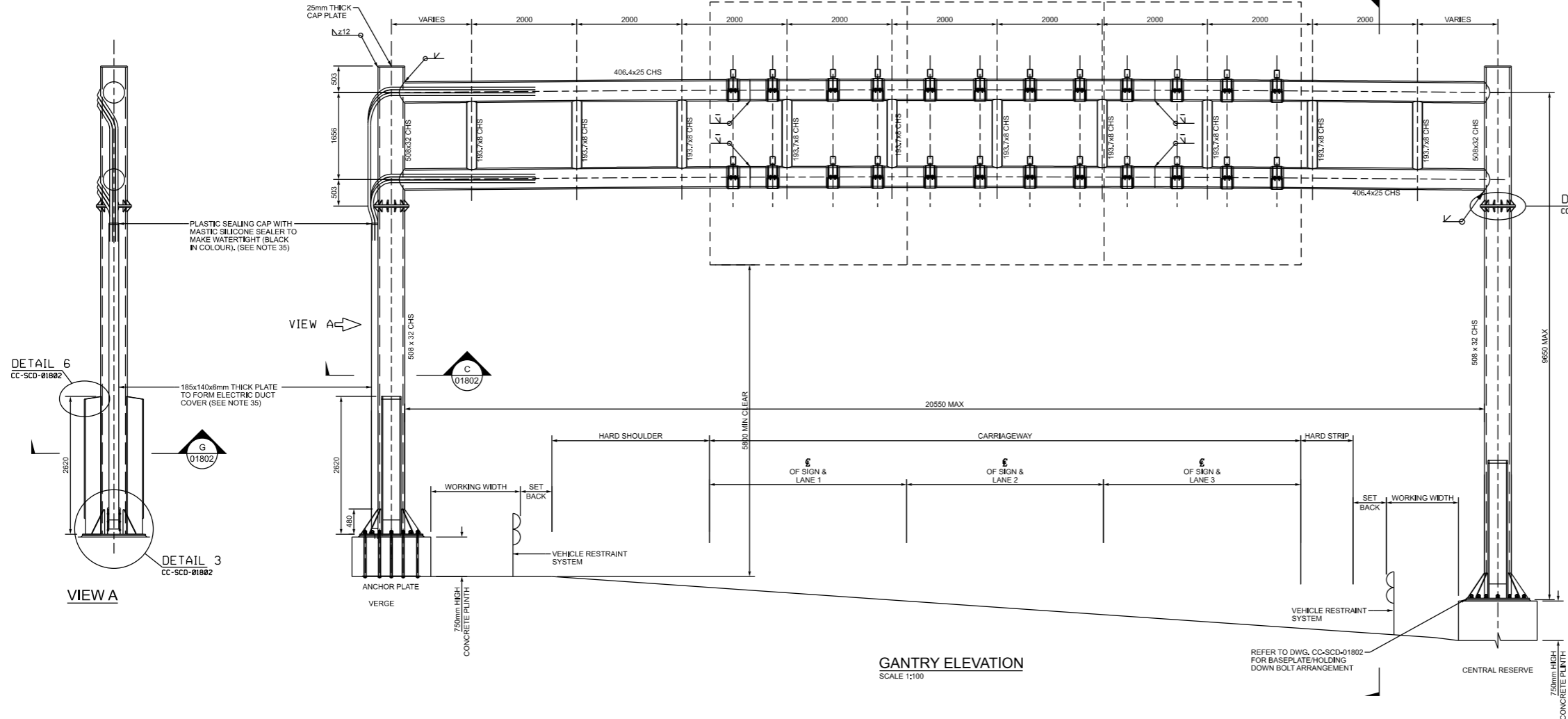


- NOTES:**
- THE PURPOSE OF THIS DETAIL IS TO ENSURE A CONSISTENCY OF STRUCTURAL FORM FOR GROUP 1 GANTRIES ACROSS THE NATIONAL ROAD NETWORK. ALL SECTION SIZES AND DETAILS ARE MINIMUM INDICATIVE SIZE ONLY. THE NRA TAKE NO RESPONSIBILITY FOR THE STRUCTURAL OR GEOMETRICAL ADEQUACY OF THESE DETAILS. IT IS THE RESPONSIBILITY OF THE DESIGN ENGINEER TO ANALYSE, DESIGN AND DETAIL THE GROUP 1 GANTRY, CONNECTION DETAILS AND ITS ASSOCIATED REINFORCED CONCRETE FOUNDATION IN ACCORDANCE WITH THE EUROCODES, THEIR ASSOCIATED IRISH NATIONAL ANNEXES, DN-STR-03010, DN-STR-03013, DN-STR-03001 OF TII PUBLICATIONS AND ALL OTHER DESIGN DOCUMENTS AS APPROPRIATE TO THE ROAD BEING SPANNED.
 - ALL GANTRY SUPPORT LEGS LOCATED LESS THAN 4.5M FROM THE EDGE OF CARRIAGEWAY SHALL BE DESIGNED TO WITHSTAND THE VEHICLE COLLISION LOADS GIVEN IN TABLE 4.2 OF DN-STR-03010 OF TII PUBLICATIONS REGARDLESS OF THE PRESENCE OF A VEHICLE RESTRAINT SYSTEM.
 - ALL DIMENSIONS ARE IN MILLIMETRES.
 - THE DESIGNER OF SPECIFIC GANTRIES SHALL PRODUCE STRUCTURAL DRAWINGS FOR THE SPECIFIC GANTRY, ALL INFORMATION THAT IS SITE SPECIFIC MUST BE INCLUDED ON THESE DRAWINGS.
 - THE SECONDARY SIGN STEELWORK VERTICALS AND SIGN LAYOUT ARE INDICATIVE OF THE MAXIMUM SIGN AREA THE GANTRY CAN SUPPORT. THE DESIGNER OF SPECIFIC GANTRIES IS ALSO RESPONSIBLE FOR THE SIGN LAYOUT AND DESIGN OF ANY SECONDARY STEELWORK SUPPORTING THE SIGN INCLUDING SECTION SIZES AND SPACING OF VERTICAL MEMBERS. IT IS THE RESPONSIBILITY OF THE DESIGN ENGINEER TO ENSURE THAT THE CLAMPS SUPPORTING THE VERTICAL MEMBERS AND SIGN DO NOT CLASH WITH THE PROPOSED GANTRY SUPPORT MEMBERS.
 - STEEL SHALL BE S355J2G3 TO IS EN 10025-2 TO IS EN 10025-5 UNLESS NOTED OTHERWISE, HOLLOW SECTIONS TO BE GRADE S355J2H TO IS EN 10210 UNLESS NOTED OTHERWISE.
 - THE STEELWORK DIMENSIONS SHOWN ARE SPECIFIED FOR A MEAN TEMPERATURE OF 15 DEGREES CENTIGRADE.
 - STRUCTURAL STEELWORK TO BE IN ACCORDANCE WITH CC-SPW-01800 OF TII PUBLICATIONS.
 - PROTECTION TO STEELWORK TO BE IN ACCORDANCE WITH CC-SPW-01900 OF TII PUBLICATIONS. FINAL COLOUR TO BE APPROVED BY TII. ALL SPLICES AND CONNECTORS TO BE FULLY TOP COATED AFTER ASSEMBLY. ALL GAPS SHOULD BE SEALED.
 - DIFFERENTIAL SETTLEMENT BETWEEN THE END SUPPORTS IS TAKEN AS 15mm. A SITE SPECIFIC ASSESSMENT OF DIFFERENTIAL SETTLEMENT SHALL BE CARRIED OUT, WITH 15mm DESIGNED FOR AS A MINIMUM.
 - LIFTING EYES TO BE DESIGNED BY STEELWORK FABRICATOR AND SUBMITTED TO THE DESIGNER OF SPECIFIC GANTRIES FOR APPROVAL AT LEAST 4 WEEKS PRIOR TO FABRICATION. TEMPORARY WELDED ATTACHMENTS REQUIRED FOR ERECTION SHALL BE REMOVED AND PROTECTIVE COATING SYSTEM APPLIED IN ACCORDANCE WITH CC-SPW-01900 OF TII PUBLICATIONS.
 - METHOD OF ERECTION OF GANTRY TO BE APPROVED BY THE DESIGNER OF SPECIFIC GANTRIES.
 - ANY TEMPORARY ARRANGEMENT REQUIRED FOR LANDING MAIN BEAM PRIOR TO SITE CONNECTION SHALL BE AGREED WITH THE DESIGNER OF SPECIFIC GANTRIES 4 WEEKS PRIOR TO FABRICATION.
 - TEMPORARY WELDED ATTACHMENTS SHALL BE SUBJECT TO APPROVAL BY THE DESIGN ENGINEER.
 - WELD SYMBOLS ARE IN ACCORDANCE WITH IS EN 22553.
 - ALL FILLET WELDS SHALL BE MINIMUM 6mm LEG LENGTH AND CONTINUOUS UNLESS NOTED OTHERWISE. DESIGN ENGINEER TO VERIFY.
 - BOLTS SHALL BE AS DESCRIBED ON THE DRAWING, DESIGN ENGINEER TO VERIFY.
 - COPE HOLES AND RE-ENTRANT CORNERS SHALL HAVE A RADIUS OF AT LEAST 50mm OR 1.25 TIMES THE PLATE THICKNESS, WHICHEVER IS GREATER, UNLESS NOTED OTHERWISE.
 - HARD STAMPING SHALL NOT BE PERMITTED ON ANY PERMANENTLY EXPOSED SURFACES.
 - ASSUMED MAX WEIGHT OF ADS 20kg/m².
 - MAXIMUM DEPTH OF SIGN TO BE 400mm.
 - STRUCTURAL STEELWORK SUPPORTING SIGNAGE OFF GANTRIES HAS A MAX. ASSUMED WEIGHT OF 27.8kg/m. THE STRUCTURAL ADEQUACY OF ALTERNATIVE ARRANGEMENTS PROPOSED BY THE DESIGNERS OF SPECIFIC GANTRIES TO ACCOMMODATE SPECIFIC SIGNS SHALL BE VERIFIED BY THE DESIGNERS OF SPECIFIC GANTRIES.
 - VERTICALS 1 AND 4 ARE DESIGNED TO SUPPORT VARIABLE MESSAGE SIGNAGE (VMS). VERTICALS 2 AND 3 ARE OMITTED TO ALLOW ACCESS TO BACK OF VMS. ALL VERTICALS ARE REQUIRED FOR ADVANCED DIRECTIONAL SIGNAGE. SIZE AND SPACING OF VERTICALS TO BE CONFIRMED BY THE DESIGN ENGINEER.
 - WIND LOADING SHALL BE IN ACCORDANCE WITH IS EN 1991-1-4 AND THE ASSOCIATED IRISH NATIONAL ANNEX.
 - ALL BOLTS AND NUTS TO BE VIBRATION RESISTANT.
 - ALL WELDS ARE IN TENSION UNDER TEMPORARY AND IN-SERVICE CONDITIONS.
 - MINIMUM CLASS OF CONCRETE IN FOUNDATION TO BE C32/40.
 - ALL ELEMENTS TO BE LIFTED FROM LIFTING EYES. SLINGS NOT TO BE USED TO PREVENT DAMAGE TO PROTECTIVE COATING.
 - GANTRIES ARE ASSUMED PERPENDICULAR TO THE MAINLINE.
 - SECONDARY SIGNWORK STRUCTURAL STEELWORK NOT TO BE USED FOR LIFTING.
 - THE RESIDUAL PRECAMBER AFTER PERMANENT AND SUPER-IMPOSED DEAD LOADS FOR SPECIFIC SCHEMES SHALL BE SPAN/400 AND BE ACHIEVED AT MID-SPAN WITH A SMOOTH CURVE BETWEEN MID-SPAN AND END SUPPORTS.
 - CARRIAGEWAY CROSS SECTION IS INDICATIVE ONLY.
 - SIGN SUPPORT DETAILS AND CABLE RUNS REQUIRED SHALL BE CONFIRMED BY THE DESIGNER OF THE SPECIFIC GANTRIES WITH ELECTRICAL SUPPLIER.
 - DUCTING TO BE PROVIDED BY SPECIALIST SUBCONTRACTORS.
 - PROVISION OF ELEMENTS SUPPORTING AND ACCOMMODATING ELECTRICAL EQUIPMENT AT SPECIFIC GANTRIES TO BE CONFIRMED WITH THE TII PUBLICATIONS.
 - THE DESIGNER OF SPECIFIC GANTRIES SHALL BE SUBJECT TO, AND SHALL COMPLY WITH THE TECHNICAL APPROVAL PROCEDURES FOR STRUCTURES CONTAINED WITHIN DN-STR-03001 OF TII PUBLICATIONS.



GANTRY GROUP 1
GENERAL ARRANGEMENT OF GANTRY GROUP 1 SHEET 1 OF 3

ACTIVITY		PUBLICATION TITLE		
STREAM	SHEET	HISTORICAL REFERENCE	DOCUMENTATION SET	PUBLICATION DATE
STANDARD CONSTRUCTION DETAIL (SCD)	A3	RCD/1800/01	STANDARD	DECEMBER 2014
PUBLICATION NUMBER		ACTIVITY		
DRAWING NUMBER		CC	SCD	01801