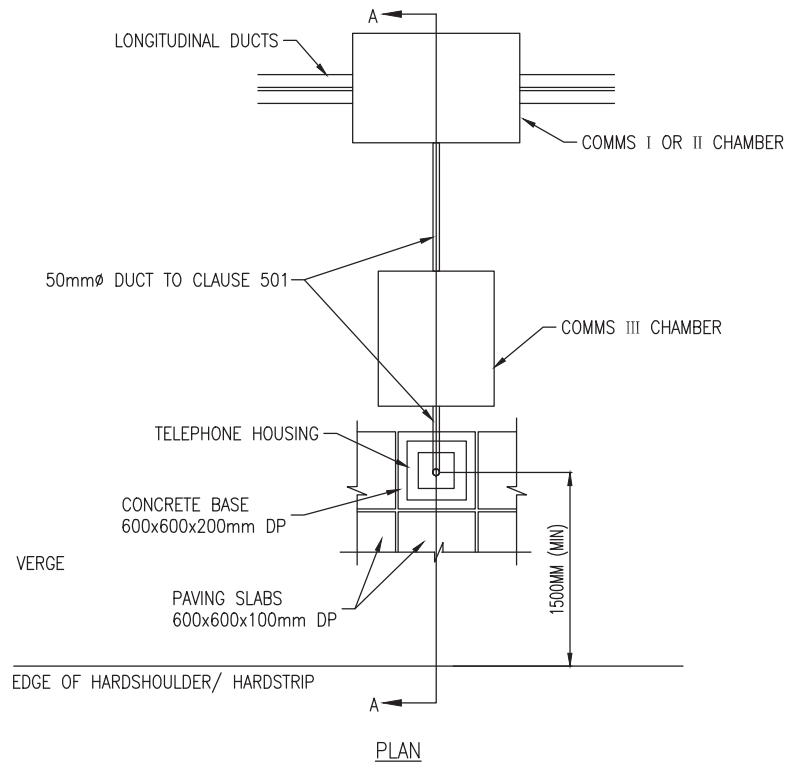


SECTION A-A
GENERAL ARRANGEMENT



NOTES:

1. NOT TO SCALE. ALL DIMENSIONS IN MILLIMETRES.
2. THE LAYOUT SHOWN IS INDICATIVE ONLY.
3. THE DUCT AND CHAMBER LAYOUT WILL REMAIN THE SAME FOR TELEPHONES WITHOUT SAFETY BARRIER AND TELEPHONES LOCATED BEHIND SAFETY BARRIER.
4. COVER(S) AND FRAME SHALL COMPLY WITH IS EN 124 AND SHALL BE AS DESCRIBED IN APPENDIX 15/2.
5. THE EMERGENCY ROADSIDE TELEPHONE SHALL BE SET IN A 600x600x200mm ST2 CONCRETE BASE TO CLAUSE 2602.
6. 1x50mmØ DUCT TO BE CONNECTED FROM THE COMMS III CHAMBER TO THE NEAREST COMMS I OR II CHAMBER ON LONGITUDINAL DUCT NETWORK.
7. THE PAVING SLAB/ERT HARDSTANDING AREA SHALL BE LEVEL AND CONTINUOUS WITH THE HARD SHOULDER IN FRONT OF EACH ERT LOCATION. ANY GAPS BETWEEN THE PAVING SLAB/ERT HARDSTANDING AREA SHALL BE FILLED WITH BITUMINOUS MATERIAL.
8. FOR FURTHER TELEPHONE INSTALLATION DETAILS REFER TO:

- DRAWING RCD/1500/060 FOR TELEPHONE INSTALLATION WITHOUT SAFETY BARRIER
- DRAWING RCD/1500/062 FOR TELEPHONE INSTALLATION BEHIND SAFETY BARRIER
- DRAWING RCD/1500/063 FOR BLISTER SURFACE PAVING SLAB
- MCDRW 1500 SERIES.

NOT TO SCALE

TII PUBLICATION NUMBER: CC-SCD-01561