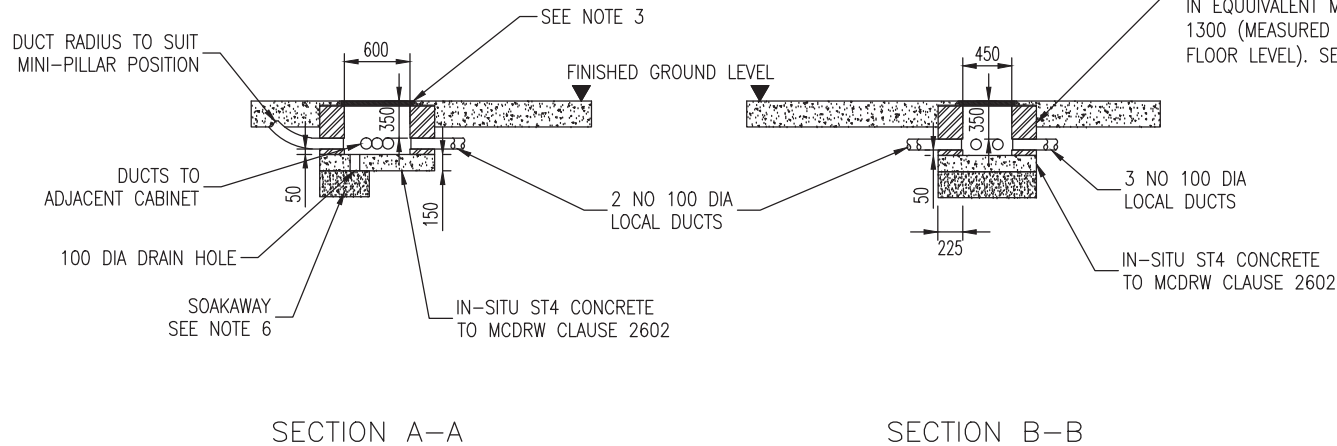


# NOTES:

- CHAMBER WALLS SHALL BE 225MM THICK AND SHALL BE AS SPECIFIED IN MCDRW CLAUSE 1532.
- TO ACCOMMODATE THE FORM OF CONSTRUCTION USED FOR THE CHAMBER THE SPACING OF THE LOCAL DUCTS MAY VARY BETWEEN 0 AND 100mm.
- COVER AND FRAME SHALL COMPLY WITH IS EN 124 AND SHALL BE AS DESCRIBED IN APPENDIX 15/2.
- THE CHAMBER WALLS SHALL BE CHAMFERED AROUND THE DUCT ENTRY POINTS TO PROVIDE SMOOTH SURFACE FOR CABLE INSTALLATION.
- REFER TO DRAWINGS BELOW FOR INSTALLATION DETAILS:
  - DUCTS: RCD/1500/010-014
  - CABINETS: RCD/1500/009.
- POSITIVE DRAINAGE IN THE FORM OF SOAKAWAY TO SUIT LOCAL GROUND CONDITIONS OF CONNECTION TO THE HIGHWAY DRAINAGE NETWORK IS REQUIRED.



NOT TO SCALE

TII PUBLICATION NUMBER: CC-SCD-01518