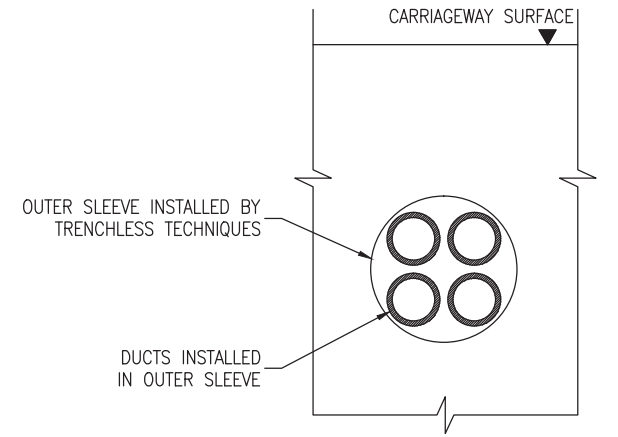


TYPE A
SHALLOW DUCTS
(750mm-1200mm)

TYPE B
DEEP DUCTS (OVER
1200mm)



TYPE C
DUCTS INSTALLED USING
TRENCHLESS TECHNIQUES

NOTES:

1. TYPES A AND B APPLY TO DUCTS INSTALLED DURING CONSTRUCTION OR RECONSTRUCTION OR MAJOR MAINTENANCE OF THE ROAD.
2. TYPE C DUCTS INSTALLED BENEATH EXISTING CARRIAGEWAYS SHALL BE INSTALLED USING TRENCHLESS TECHNIQUES WITH AT LEAST 300mm CLEARANCE BETWEEN THE DUCTS AND THE ROAD CONSTRUCTION AND SHALL COMPRISE OF 4 NO. 100mm DUCTS WITHIN A SLEEVE. ALTERNATIVELY A FOUR DUCT BUNDLE WITHOUT A SLEEVE USING DIRECTIONAL DRILLING MAY BE USED SUBJECT TO THE APPROVAL OF THE ROAD AUTHORITY.
3. THE DEPTH OF CROSS CARRIAGEWAY DUCTS WILL BE DEPENDANT UPON THE LOCATION OF DRAINAGE PIPES, AS DRAINAGE PIPES ARE INSTALLED TO STRICTLY DEFINED LEVELS. THIS WILL GENERALLY RESULT IN DUCTS BEING INSTALLED DEEPER THAN THE DRAINAGE PIPES. ON EXISTING MOTORWAYS A LINE AND LEVEL SURVEY OF EXISTING DRAINAGE SHOULD BE UNDERTAKEN BEFORE THE DEPTH OF DUCTS IS DECIDED.
4. BACKFILLING SHALL BE IN ACCORDANCE WITH MCDRW CLAUSE 505.

NOT TO SCALE

TII PUBLICATION NUMBER: CC-SCD-01512



ROAD CONSTRUCTION
DETAILS

INSTALLATION
DRAWING TCC

P1	10/13
Issue	Date

DUCT INSTALLATION
TRANSVERSE DUCTS

Drawing No.
RCD/
1500/012