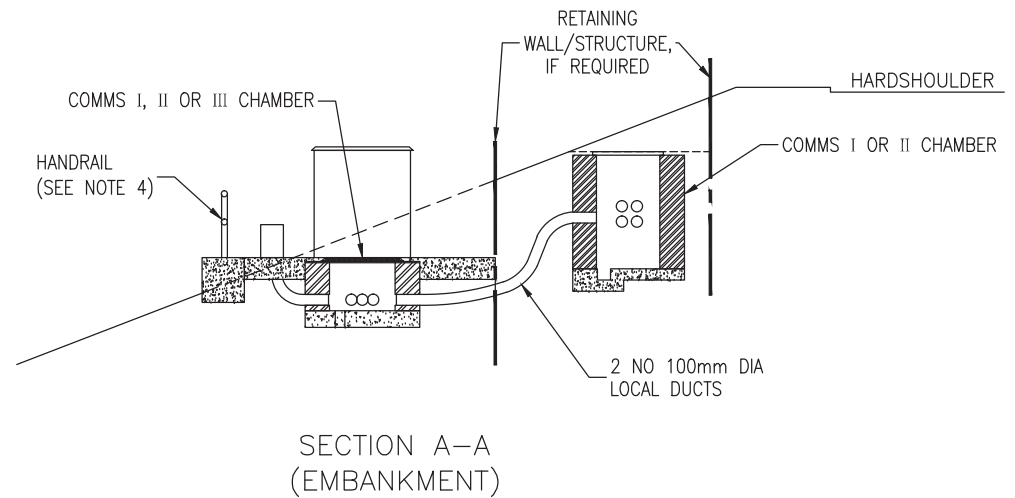
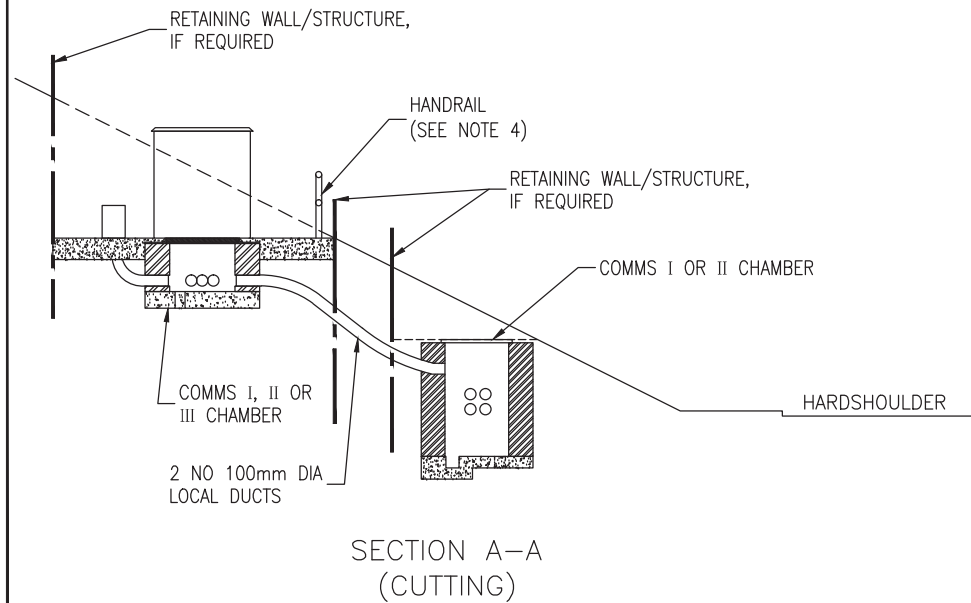


NOTES:

1. THE ARRANGEMENTS SHOWN ARE TYPICAL ONLY. WHERE CABINET LOCATION DO NOT COINCIDE WITH COMMS I OR II CHAMBERS LOCATIONS REFER TO DRAWING RCD/1500/011.
2. INSTALLATION DETAILS:
 - CABINET ARRANGEMENTS RCD/1500/009
 - DUCTS RCD/1500/010-014
 - CHAMBERS RCD/1500/015-018
3. THE FINAL LOCATION AND LAYOUT OF THE EQUIPMENT CABINET PLINTH, CHAMBERS, DUCTED LAYOUT, EARTH ELECTRODE SYSTEM AND MINI PILLAR TO SUIT LOCAL TOPOGRAPHY. REFER TO DRAWING RCD/1500/008 FOR DETAILS OF THE EARTH ELECTRODE SYSTEM.
4. HANDRAIL ONLY REQUIRED ON EMBANKMENT OR ADJACENT TO LOCAL HAZARD. HANDRAIL TO BE 1100mm HIGH IN ACCORDANCE WITH BS 6180 AND BS 5395 PART 3. FOOTING TO BE EITHER BOLTED OR ROOTED, AS DETERMINED BY SITE CONDITIONS. REFER TO DRAWINGS RCD/1500/022 & 023
5. THE CONCRETE EQUIPMENT CABINET IS 200mm THICK C40 CONCRETE SLAB WITH A393 MESH AT TOP WITH A 50mm COVER. THE CONCRETE SLAB SHALL BE PLACED ON 250mm COMPACTED CLAUSE 804.



NOT TO SCALE

TII PUBLICATION NUMBER: CC-SCD-01509

P1	10/13
Issue	Date