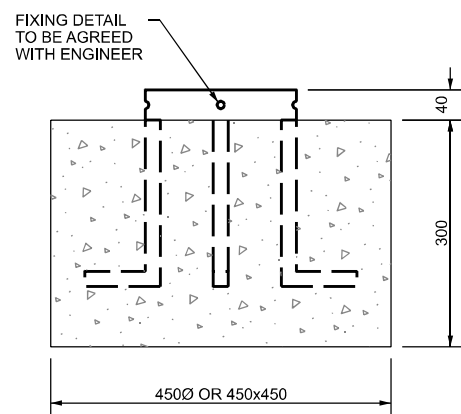
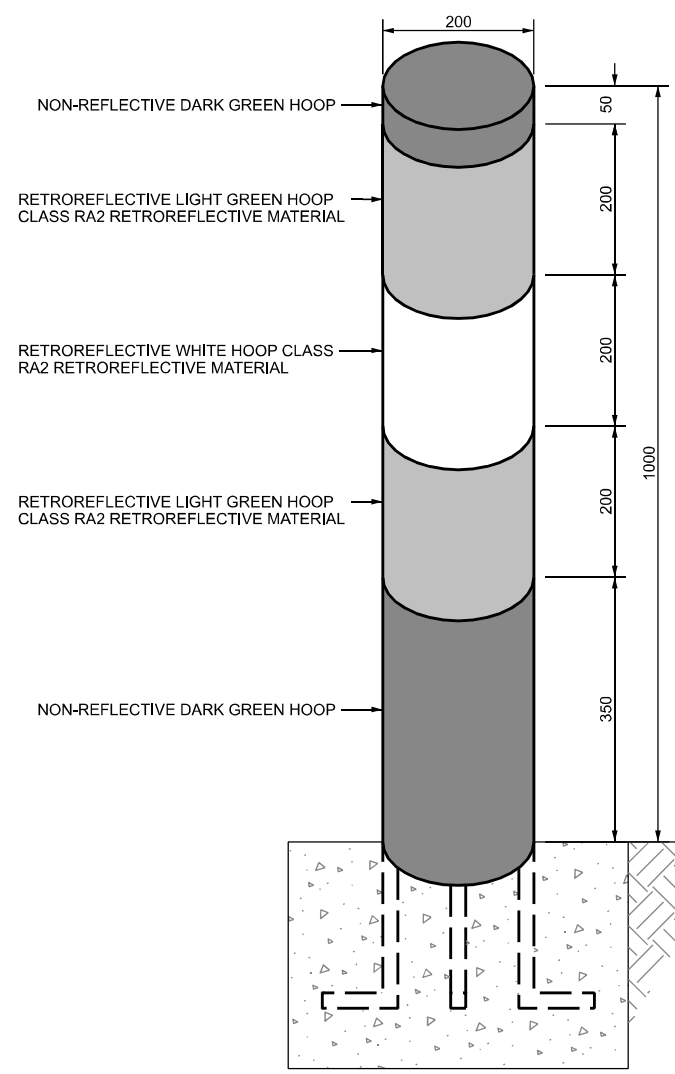


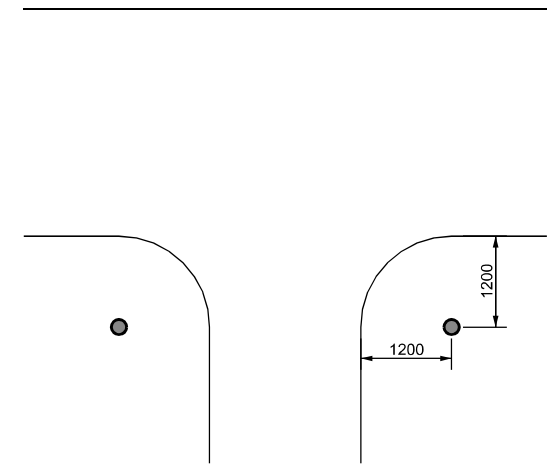
PLAN VIEW



SECTION A-A



JDP TSM REF F902



JDP LOCATION
(SEE NOTE 2)

- NOTES:-
1. CONCRETE USED FOR FOUNDATIONS SHALL HAVE A MAXIMUM AGGREGATE SIZE OF 20mm.
 2. CONCRETE USED FOR FOUNDATIONS SHALL HAVE A 28 DAY COMPRESSIVE STRENGTH OF NOT LESS THAN 10N/mm².
 3. JUNCTION DEFINITION POSTS SHALL BE LOCATED APPROXIMATELY 1200mm FROM THE EDGE OF CARRIAGEWAY.
 4. JUNCTION DEFINITION POST SHALL BE MANUFACTURED FROM 3mm THICK DARK GREEN PLIABLE PLASTIC.
 5. THE NON-RETROREFLECTIVE PARTS OF THE POST SHALL BE CLASS NR1 IN ACCORDANCE WITH TABLE 16 OF IS EN 12899-1.
 6. THE RETROREFLECTIVE PARTS OF THE POST SHALL BE CLASS RA2 IN ACCORDANCE WITH TABLE 4 OF IS EN 12899-1.
 7. ALL DIMENSIONS ARE IN MILLIMETRES.



PUBLICATION TITLE
**INFORMATION SIGNS
JUNCTION DEFINITION POST TSM CHAPTER 4**

ACTIVITY	PUBLICATION TITLE			PUBLICATION NUMBER		
STREAM	HISTORICAL REFERENCE	DOCUMENTATION SET	PUBLICATION DATE	ACTIVITY	STREAM	DRAWING NUMBER
STANDARD CONSTRUCTION DETAILS (SCD)	RCD/1200/4	STANDARDS	DECEMBER 2013	CC	SCD	01204