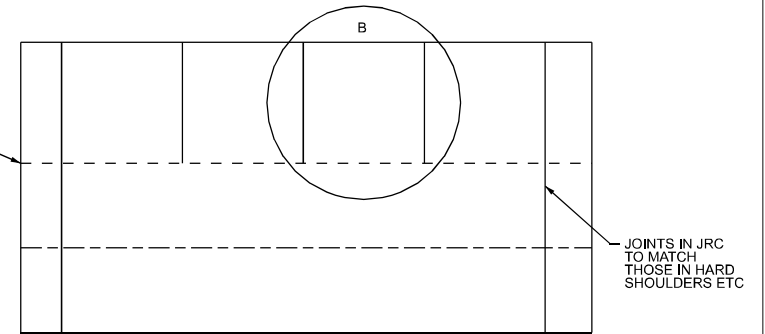
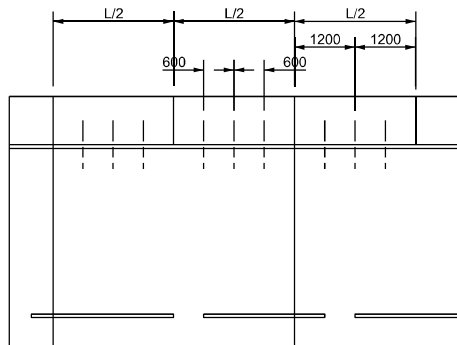


**ROAD WITH HARD STRIP, TAPER AND LAY-BY OR SLIP  
ROAD CONSTRUCTED SEPARATELY FROM CARRIAGEWAY**



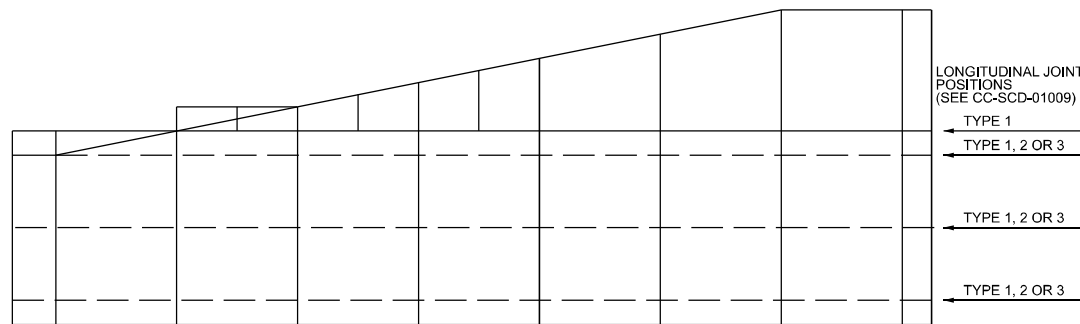
**UNREINFORCED HARD SHOULDER, LAY-BY OR HARD STRIP ADJACENT TO REINFORCED CARRIAGEWAY**



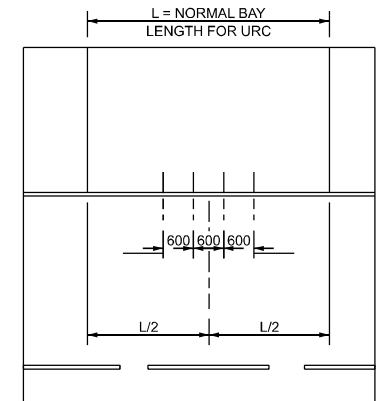
**DETAIL AT A**

UNREINFORCED HARD STRIP  
LAYOUT OF TIE BARS

- NOTES:-
1. ALL DIMENSIONS ARE IN MILLIMETRES.
  2. HARD SHOULDERS, HARD STRIPS, LAY-BYS AND TAPERS SHALL BE OF THE SAME THICKNESS AS THE CONCRETE CARRIAGEWAY. SURFACE SLABS WITH AN ASPECT RATIO >2.5 (3.0 FOR LIMESTONE) SHALL BE REINFORCED WITH THE SAME REINFORCEMENT AS MAIN SLAB, IF JRC. IF URJ, MINIMUM REINFORCEMENT SHALL BE STANDARD MESH C636, TO BS 4483.
  3. TRANSVERSE JOINTS AT NORMAL POSITIONS SHALL BE EXPANSION OR CONTRACTION JOINTS. EXTRA JOINTS TO REDUCE SLAB LENGTH SHALL BE WARPING JOINT.
  4. SEE THE DRAWINGS FOR DIMENSIONS FOR TAPERS, LAY-BYS ETC.



**ROAD CONSTRUCTED AS ONE PIECE  
WITH SEPARATE LAY BY OR SLIP ROAD**



**DETAIL AT B**

UNREINFORCED BAYS NEXT TO  
REINFORCED CARRIAGEWAY.  
LAYOUT OF TIE BARS



PUBLICATION TITLE  
**CONCRETE PAVEMENTS  
JOINT LAYOUT FOR HARD SHOULDERS, HARD STRIPS AND LAY-BYS**

ACTIVITY

STREAM

STANDARD CONSTRUCTION DETAILS (SCD)

HISTORICAL REFERENCE

RCD/1000/19

DOCUMENTATION SET

STANDARD

PUBLICATION DATE

MARCH 2000

PUBLICATION NUMBER

ACTIVITY

STREAM

DRAWING NUMBER

CC

SCD

01019