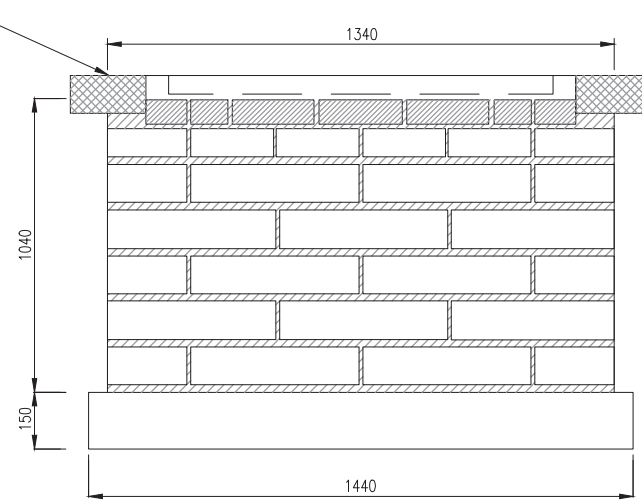
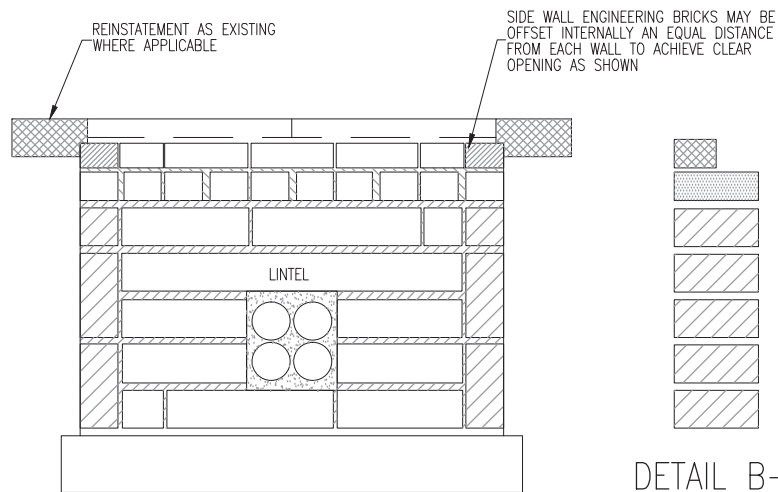


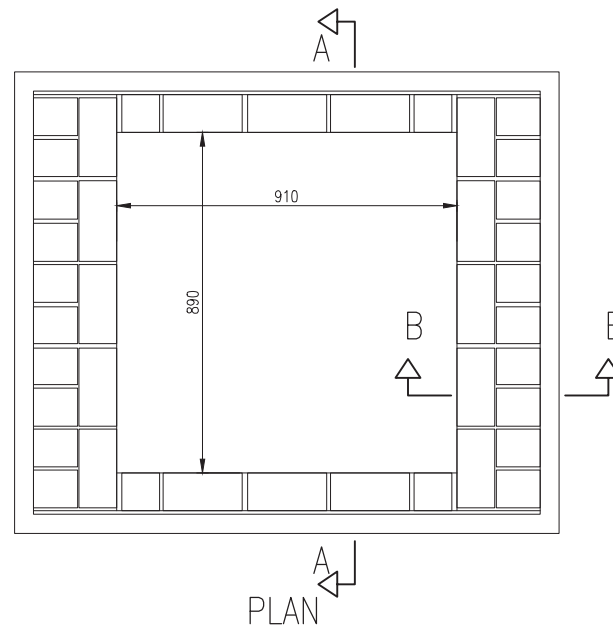
END ELEVATION



SIDE ELEVATION



SECTION A-A



PLAN

NOTES:

1. ALL DIMENSIONS IN MILLIMETRES.
2. FOUNDATIONS TO BE AS PER SPEC 507.2.
3. CONCRETE MIX SHALL BE ST4 AS PER SPEC 507.2.
4. CHAMBER WALLS TO BE TYPE S10 BLOCKS COLOURED RED WITH 10 N/mm² MINIMUM COMPRESSIVE STRENGTH AND CLASS B ENGINEERING BRICK WITH 50 N/mm² MINIMUM COMPRESSIVE STRENGTH.
5. BLOCK AND BRICK LAYERS TO BE IN ACCORDANCE WITH DETAIL WITH 900x215x100mm REINFORCED CONCRETE LINTEL TO IS 240 ABOVE DUCT OPENINGS. ALLOW 3 DAYS FOR BLOCKWORK MORTAR TO CURE BEFORE BACKFILLING VOIDS OUTSIDE BLOCKWORK WITH LEAN MIX CONCRETE OR SUBBASE TO CLAUSE 804 LAID IN 200mm THICK LAYERS EACH LAYER WELL CONSOLIDATED WITH A MECHANICAL COMPACTOR.
6. OPTIMUM POSITION OF DUCTS TO BE 115mm ABOVE FLOOR OF CHAMBER.
7. MORTAR TO BE 1:3 CEMENT/SAND MIX AS PER SPEC 507.13.
8. SIZE OF BLOCK = 440x215x100mm SIZE OF ENGINEERING BRICK = 215x100x65mm.
9. ALL JOINTS TO BE 8 TO 15mm THICK AS PER SPEC 507.3 AND SERIES 2400.
10. COVER FRAME TO BE FULLY BEDDED ON MINIMUM OF 10 mm DESIGNATION 1 MORTAR AS PER SPEC 507.3.
11. POSITION OF CABLE BEARER BRACKETS AND SUMP TO BE DECIDED ON SITE WHERE REQUIRED.
12. WHERE SUMP IS INSTALLED IT SHOULD BE DISH FORMED AND NOT EXTEND THROUGH PLINTH.
13. LOCKABLE COVERS CAN ONLY BE REMOVED FROM LOCKED END. FRAMES MUST BE LAID TO ALLOW FOR EASY REMOVAL OF COVERS AS PER 507.7.
14. PRECAST CHAMBERS TO IS EN 1917 ARE ALSO PERMITTED AS PER SPEC 507.4.
15. CAST IN-SITU CONCRETE CHAMBERS ARE ALSO PERMITTED AND SMALL BE CONSTRUCTED AS PER SPEC 507.4.

SCALE 1:25

TII PUBLICATION NUMBER: CC-SCD-00564