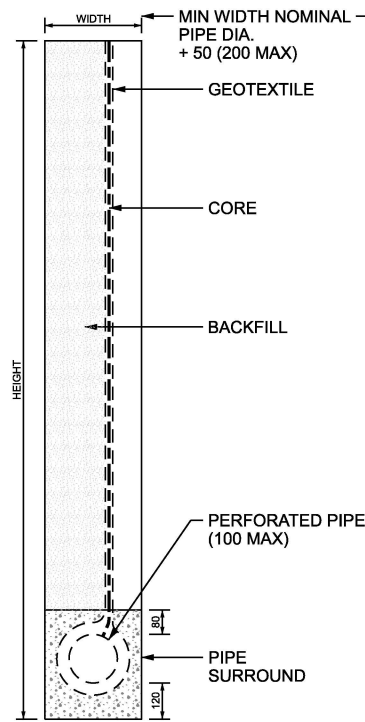
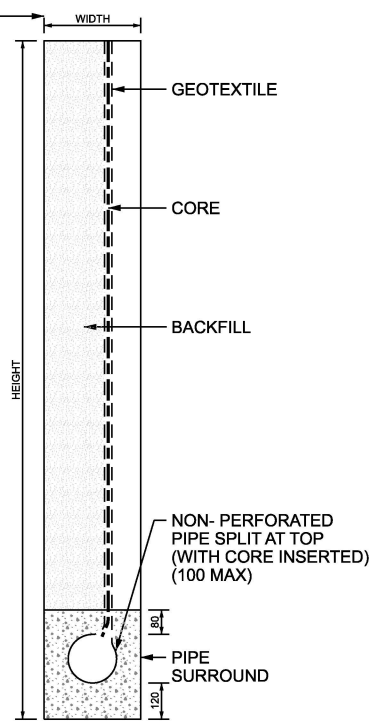


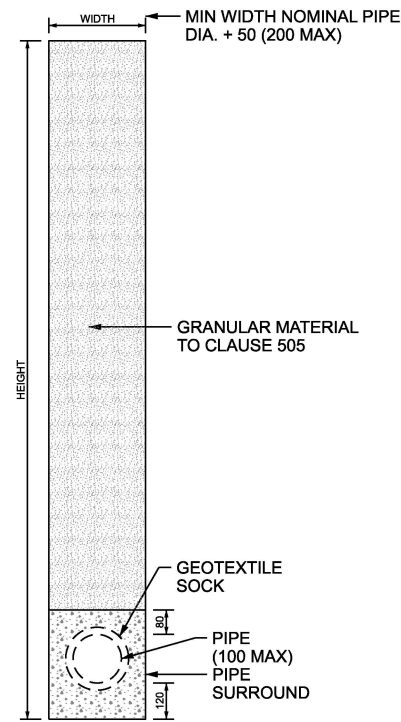
**DRAIN TYPE 5**



**DRAIN TYPE 6**

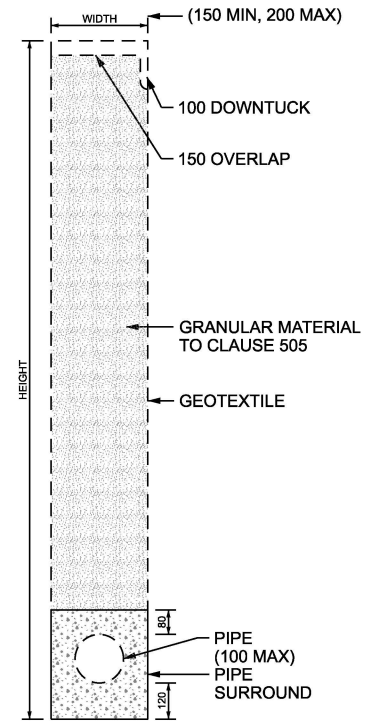


**DRAIN TYPE 7**



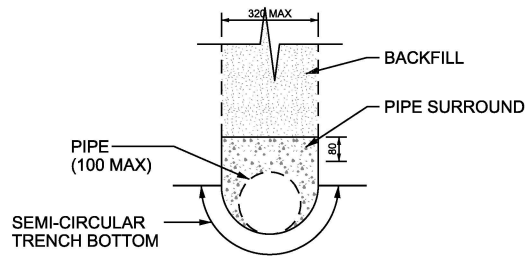
**DRAIN TYPE 8**

WRAPPED PIPE



**DRAIN TYPE 9**

LINED TRENCH



**ALTERNATIVE TRENCH SHAPE**

FOR DRAINS TYPE 6, 7, 8 AND 9

**FIN DRAINS**

DRAINS TYPE 5, 6, AND 7

**NARROW FILTER DRAINS**

DRAINS TYPE 8 AND 9

- NOTES:**
1. ALL DIMENSIONS ARE IN MILLIMETRES.
  2. THE SURROUNDING MATERIAL AND BACKFILL TO THE PIPES OF DRAIN TYPES 6 AND 7 SHALL COMPLY TO CLAUSE 514.
  3. THE SURROUNDING MATERIAL TO PIPES OF DRAIN TYPES 8 AND 9 SHALL BE THE GRANULAR MATERIAL USED AS INFILL TO THE DRAIN.

NOT TO SCALE



PUBLICATION TITLE

DRAINAGE  
EDGE OF PAVEMENT DRAINS - FIN DRAINS AND NARROW FILTER DRAINS

STREAM

STANDARD CONSTRUCTION DETAILS (SCD)

HISTORICAL REFERENCE

RCD/500/40

DOCUMENTATION SET

STANDARDS

PUBLICATION DATE

FEBRUARY 2024

PUBLICATION NUMBER

ACTIVITY

CC

STREAM

SCD

DRAWING NUMBER

00540