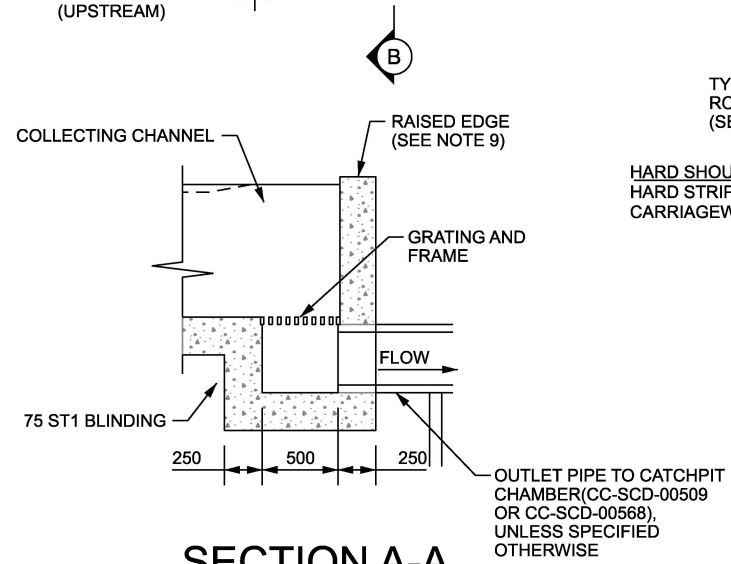
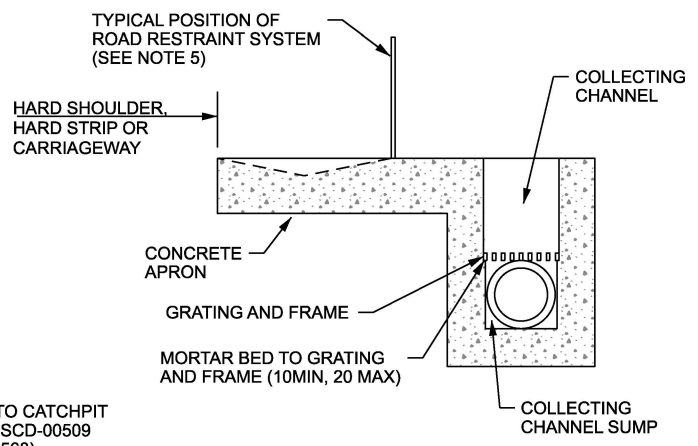


PLAN

- NOTE:
1. ALL DIMENSIONS ARE IN MILLIMETRES.
 2. DETAIL SHOWS WEIR OUTLET TO TRIANGULAR S.W. CHANNEL WITH NECESSARY MINOR MODIFICATIONS, OVERALL DIMENSIONS, CROSS FALLS ETC. OF APRON SLAB, COLLECTING CHANNEL AND COLLECTING CHANNEL SUMP TO BE DESIGNED TO WITHSTAND THE ACCIDENTAL WHEEL LOADING DEFINED IN IS EN 1991 -2 + NA CLAUSE 4.7.3.1 (2).
 3. A TRANSVERSE JOINT IN ACCORDANCE WITH CC-SPW-01000 CLAUSE 1009 SHALL BE FORMED BETWEEN THE APRON SLAB AND S.W. CHANNELS AT EACH END OF THE SLAB. NO JOINTS SHALL BE PERMITTED WITHIN ADJACENT LENGTHS OF CONCRETE PAVEMENT SLABS. NECESSARY JOINTS IN SUCH SLABS SHALL BE SPACED ACCORDINGLY.
 4. DIMENSION L BETWEEN APRON SLAB AND OUTFALL CHAMBER TO BE NOT LESS THAN REQUIRED IN ACCORDANCE WITH CC-SPW-00500 CLAUSE 507.15.
 5. ROAD RESTRAINT SYSTEM TO BE AS SHOWN ON THE DRAWINGS AND SCHEDULED IN APPENDIX 4/1.
 6. CONCRETE TO APRON SLAB SHALL COMPLY WITH CC-SPW-01100 CLAUSE 1103. PLAIN CONCRETE SHALL BE DESIGNED CONCRETE, STRENGTH CLASS C 28/35 TO IS EN 206-1. REINFORCED CONCRETE SHALL BE STRENGTH CLASS C 32/40 TO CC-SPW-01000 CLAUSE 1001.
 7. SURFACE WATER CHANNELS BECOME DISCONTINUOUS AT EACH WEIR OUTLET. DETAILS SHOWN ON THIS DRAWING INDICATE RECOMMENCEMENT OF SURFACE WATER CHANNEL DOWN-GRADIENT FROM WEIR OUTLET.
 8. THE DISTANCE BETWEEN THE TRAFFIC FACE OF ANY ROAD RESTRAINT SYSTEM AND THE NEAREST VERTICAL FACE OF THE COLLECTING CHANNEL SHOULD NOT BE LESS THAN 75% OF THE WORKING WIDTH CLASS AS SPECIFIED IN APPENDIX 4/1.
 9. 50mm HIGH RAISED EDGE DETAIL REQUIRED WHERE SHOWN TO PROTECT VERGE FROM OVERSPILL FROM APRON SLAB.





SECTION A-A



SECTION B-B

NOT TO SCALE

| | | | | | | | | | | |
|----------------------------------------------------------------------------------------------------------------------------------------------------------|-----------------------------------------------------------------------------------------------------------------------------|----------------------------------------------------------------------|-------------------------------------------|----------------------------------------------|-------------------------------------------------------------------------------------------------------------------------------------------------------------------------------|----------|--------|----------------|----|-----|
|  <p>Bonneagar Iompair Eireann Transport Infrastructure Ireland</p> |  <p>Construction & Commissioning</p> | <p>PUBLICATION TITLE</p> <p>WEIR OUTLET TO SURFACE WATER CHANNEL</p> | | | | | | | | |
| | <p>STREAM</p> <p>STANDARD CONSTRUCTION DETAILS (SCD)</p> | <p>HISTORICAL REFERENCE</p> <p>RCD/500/28</p> | <p>DOCUMENTATION SET</p> <p>STANDARDS</p> | <p>PUBLICATION DATE</p> <p>FEBRUARY 2024</p> | <p>PUBLICATION NUMBER</p> <table border="1"> <tr> <td>ACTIVITY</td> <td>STREAM</td> <td>DRAWING NUMBER</td> </tr> <tr> <td>CC</td> <td>SCD</td> <td>00528</td> </tr> </table> | ACTIVITY | STREAM | DRAWING NUMBER | CC | SCD |
| ACTIVITY | STREAM | DRAWING NUMBER | | | | | | | | |
| CC | SCD | 00528 | | | | | | | | |