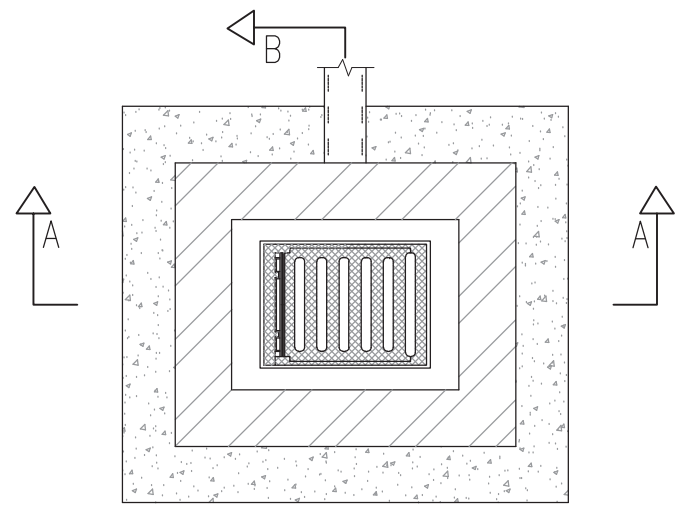
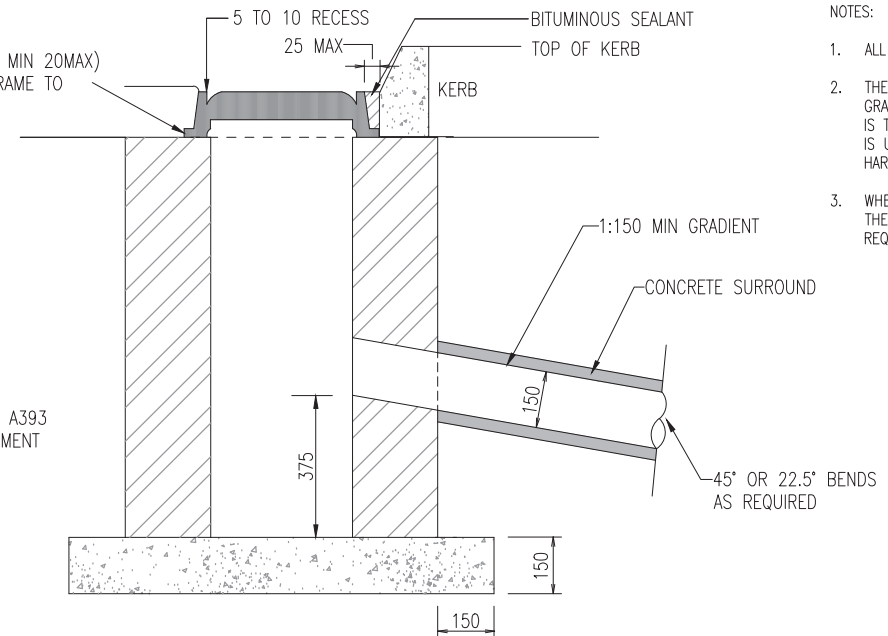


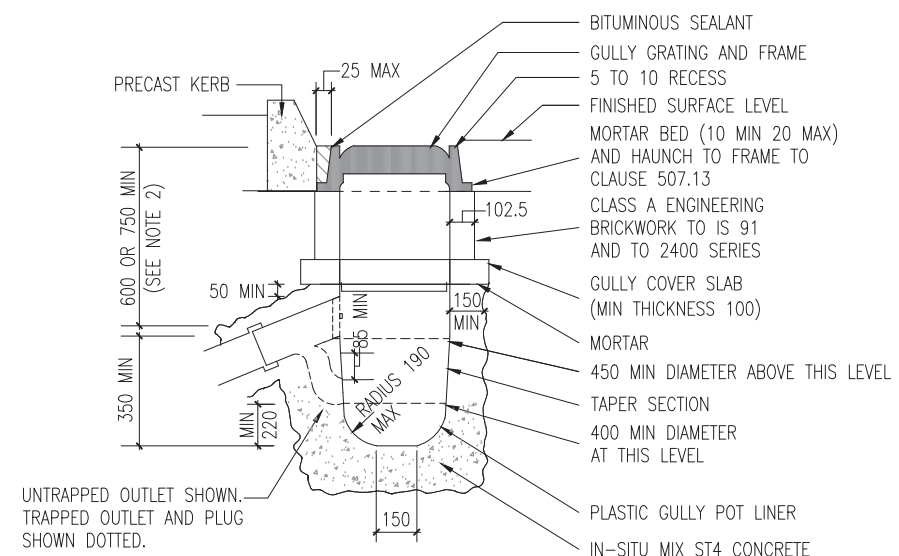
SECTION A-A



BLOCKWORK GULLY



SECTION B-B



IN-SITU CONCRETE GULLY

- NOTES:
1. ALL DIMENSIONS ARE IN MILLIMETRES.
 2. THE MINIMUM DEPTH FROM THE TOP OF THE GRATING TO THE TOP OF THE GULLY OUTLET IS TO BE 750 WHEN THE CONNECTING PIPE IS UNDER A CARRIAGEWAY OR A HARDSHOULDER AND 600 ELSEWHERE.
 3. WHEN AN IN-SITU CAST GULLY HAS A TRAP, THE STOPPERS SHALL COMPLY WITH THE REQUIREMENTS OF IS 5911-4 IS EN 1917.

NOT TO SCALE



ROAD CONSTRUCTION
DETAILS

DRAINAGE

P4	03/15
P3	01/09
P2	10/07
Issue	Date

IN-SITU CONCRETE
AND BLOCKWORK GULLIES

Drawing No.
RCD/
500/11

TII PUBLICATION NUMBER: CC-SCD-00511