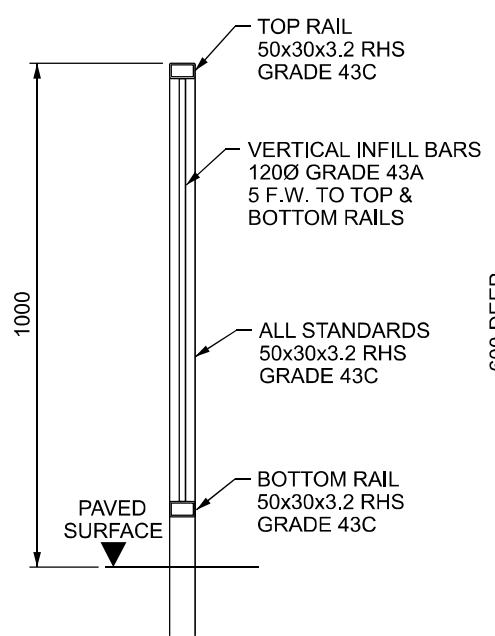
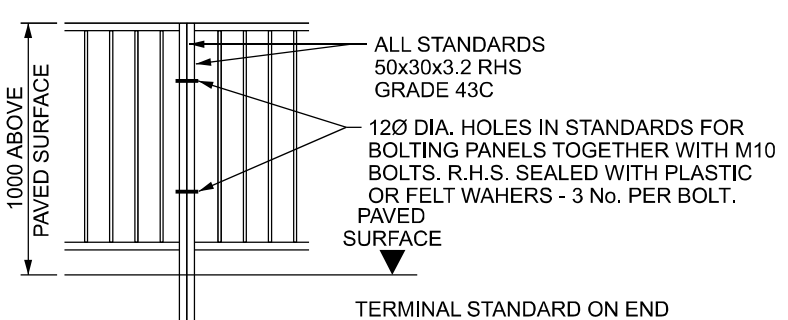


TYPICAL ARRANGEMENT



TYPICAL SECTION THROUGH GUARDRAIL



ALTERNATIVE POST DETAIL

TERMINAL STANDARD ON END PANEL OF PARAPET TO BE 50x50x3.2 R.H.S. GRADE 43C.

- NOTES :-
1. GUARDRAILS TO CONFORM TO BS 7818.
 2. ALL MATERIAL TO BE IN ACCORDANCE WITH BS EN 775-8. GRADE OF MATERIAL AS NOTED.
 3. HOLLOW SECTIONS TO BE IN ACCORDANCE WITH BS EN 10210-2.
 4. WELDING TO BE IN ACCORDANCE WITH BS EN 1011-2.

NOTE :- FOR EASE OF SITE FIXING BOLTED UP PANELS CAN BE ADOPTED - AS SHOWN ABOVE.

	ACTIVITY	PUBLICATION TITLE			
		SAFETY FENCES PEDESTRIAN GUARDRAIL			
STREAM	HISTORICAL REFERENCE	DOCUMENTATION SET	PUBLICATION DATE	PUBLICATION NUMBER	
STANDARD CONSTRUCTION DETAILS (SCD)	RCD/400/1	STANDARDS	MARCH 2000	ACTIVITY	DRAWING NUMBER
				CC	00401