

ELEVATION FIELD SIDE

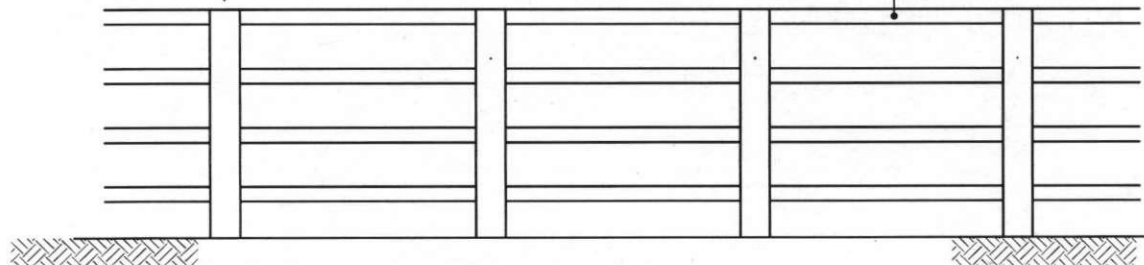
POST: 1950X150X75  
TOLERANCES TO I.S. 435  
PART 1, CL. 4.1.4. AND FIG. 1

LINE WIRE TO I.S. 435  
PART 1, CLAUSE 4.4.4.



PLAN

RAIL: 4200X100X44  
TOLERANCES TO I.S. 435 PART 1  
CL. 4.1.4 AND FIG. 1



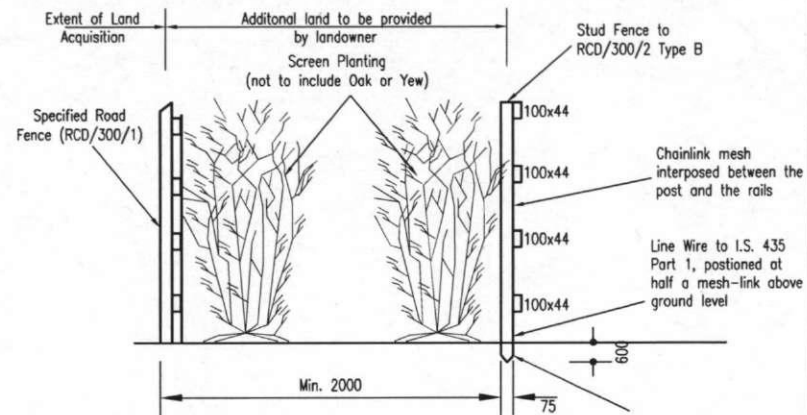
ELEVATION ROAD SIDE

**NOTES B:**

NO CHAINLINK MESH SHALL BE ERECTED ONTO THE STUD FENCE, UNLESS OTHERWISE STATED IN APPENDIX 3/1 OR AS DIRECTED BY THE ENGINEER.

**FIXING.**

FIXING IN ACCORDANCE WITH I.S. 435-3:2005, NOTES 13 AND 14 AND SECTION 4.4 OF I.S. 435-1, 2005



**NOTES A:**

- FENCES SHALL BE CONSTRUCTED AND ERECTED IN ACCORDANCE WITH IS. 435: 2005 EXCEPT WHERE OTHERWISE SHOWN.
- ANY LENGTH OF FENCING (INCLUDING BRANCHES AND SPURS) SHALL START WITH A POST AND END WITH A POST. AN ADDITIONAL POST SHALL BE PROVIDED AT FENCE JUNCTIONS AND AT FENCE CORNERS.
- POST HOLES FALLING IN ROCK SHALL BE EXCAVATED TO THE DEPTH SHOWN ON THIS DRAWING OR, WITH THE ENGINEER'S APPROVAL, TO A DEPTH OF 500mm, AND SHALL BE BACKFILLED WITH MIX ST2 CONCRETE, WHERE A REDUCED DEPTH OF HOLE IS ACCEPTED BY THE ENGINEER, THE TOP OF THE POST SHALL BE SUITABLY CUT AND TREATED IN ACCORDANCE WITH THE RECOMMENDATIONS OF IS.435: 2005.
- FENCE POST AND RAIL SHALL BE PRESSURE TREATED WITH CREOSOTE PRESERVATIVE IN ACCORDANCE WITH THE REQUIREMENTS OF SERIES 300 OF THE SPECIFICATIONS FOR ROAD WORKS AND APPENDIX B OF IS.435-1: 2005.
- CONCRETE FOUNDATIONS TO POSTS SHALL BE PROVIDED WHERE STATED IN APPENDIX 3/1 OR AS DIRECTED BY THE ENGINEER.
- STUD FENCE (RCD/300/2 Type B) TO BE CONSTRUCTED PARALLEL TO ROAD SIDE TIMBER POST AND RAIL FENCE (RCD/300/1). FENCES TO BE CONSTRUCTED 2m APART, WITH ADDITIONAL LAND TO BE SUPPLIED BY LANDOWNER (AS INDICATED ON CROSS SECTION VIEW).
- WHERE SIDELONG GROUND SLOPES DOWN TOWARDS THE FENCE AT A SLOPE GREATER THAN 1:4, THEN THE PERMANENT FENCING POST HEIGHT SHALL BE INCREASED BY A MINIMUM OF 250mm AND AN ADDITIONAL RAIL ADDED.



ROAD CONSTRUCTION  
DETAILS

FENCING

P2	02/07
P1	03/00
Issue	Date

STUD FENCING TYPE B

Drawing No.

RCD/  
300/2B