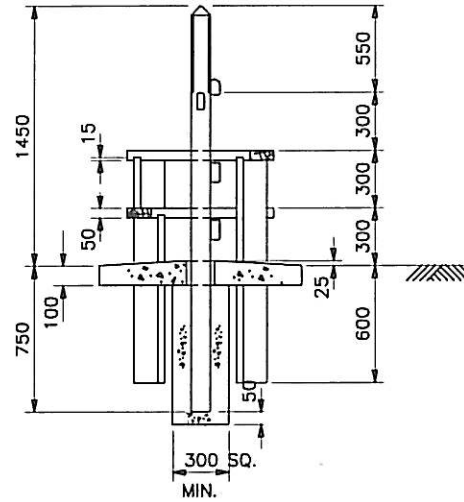


EXPANDED METAL STRIP
FIXED TO THE TOP OF
ALL STEPS

CONCRETE
MIX ST5

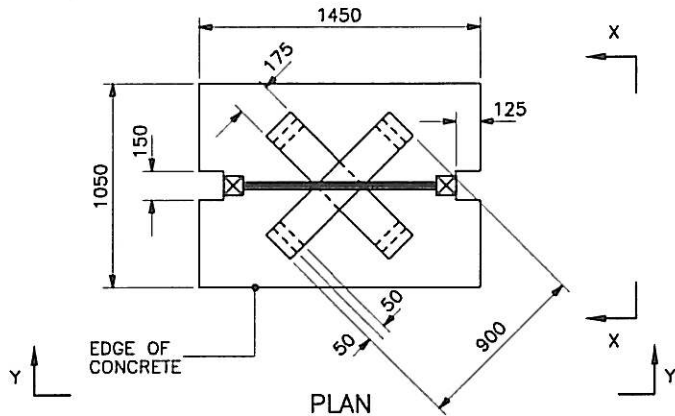
SECTION Y-Y



SECTION X-X

NOTES:

1. ALL DIMENSIONS ARE IN MILLIMETRES UNLESS OTHERWISE STATED.
2. ALL TIMBER SHALL BE IN ACCORDANCE WITH THE APPROPRIATE CLAUSES IN THE 300 SERIES AND ANY OTHER REQUIREMENTS IN APPENDICES 1/15 AND 3/1 AND BS 5709.
3. ALL STEELWORK SHALL BE GALVANIZED TO COMPLY WITH B.S. 729.
4. STILE POSTS SHALL BE SET IN LINE OF FENCE.
5. TIMBER TO BE TREATED WITH CCA IN ACCORDANCE WITH RC 25.



PLAN

DESCRIPTION OF TIMBER MATERIALS	SECTION SIZE
POSTS TOP DOUBLE CHAMFERED	150X150
CROSSHEAD WROUGHT. TOP EDGE DOUBLE CHAMFERED	100X38 MINIMUM
STEPS	175X50
SUPPORTS SECURED BY TWO 100 LONG X 4 GALVANIZED ROUND WIRE NAILS SKEW DRIVEN	175X50