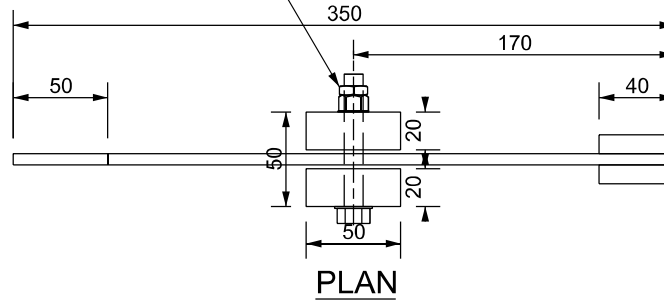
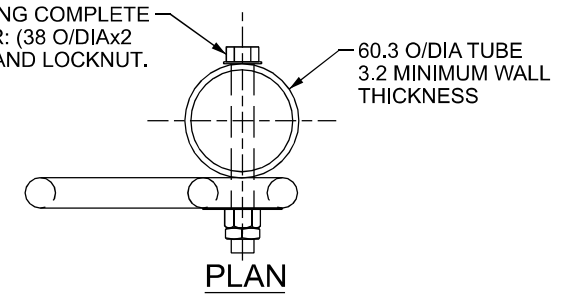


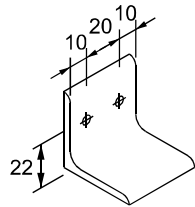
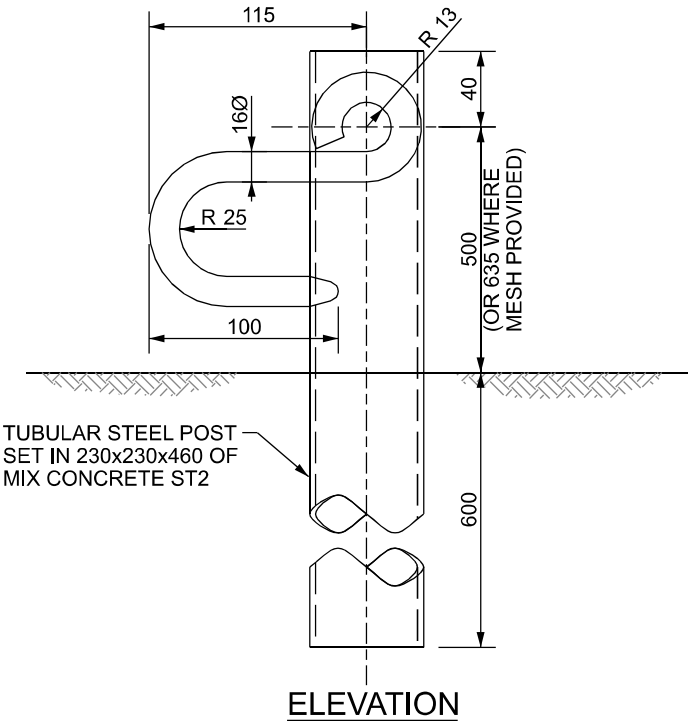
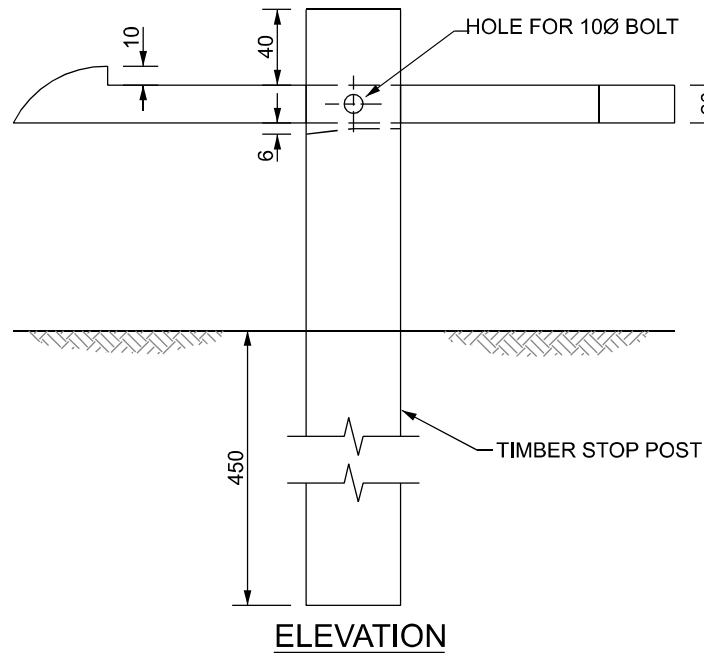
10Ø BOLTx70 LONG COMPLETE WITH TWO WASHERS, ONE NUT AND LOCKNUT (ALTERNATIVELY ONE SELF-LOCKING NUT)



12Ø BOLTx100 LONG COMPLETE WITH NE WASHER: (38 O/DIAx2 THICK) AND NUT AND LOCKNUT.



- NOTES :-
1. ALL DIMENSIONS ARE IN MILLIMETRES UNLESS NOTED STATED.
 2. GATE FITTINGS SHALL COMPLY WITH B.S. 3470 OR B.S. 5709 AS APPROPRIATE, AND ANY OTHER FURTHER REQUIREMENTS IN APPENDIX 1/15 AND 1/3.
 3. ALL METAL FITTINGS AND BOLTS SHALL BE MILD STEEL GALVANIZED TO I.S. E.N. 10240.



40x40x4 ANGLE x40 LONG FITTED TO GATE WITH TWO 40 LONG CADMIUM PLATED WOODSCREWS.

SELF LATCHING STOP POST FOR TIMBER GATES

HOLDING BACK STOP POST FOR STEEL GATES



PUBLICATION TITLE
GATES
HINGES FOR TIMBER FIELD GATE

ACTIVITY	PUBLICATION TITLE			PUBLICATION NUMBER	
STANDARD CONSTRUCTION DETAILS (SCD)	HISTORICAL REFERENCE		DOCUMENTATION SET	PUBLICATION DATE	ACTIVITY
	RCD/300/14	STANDARDS	JANUARY 2007	CC	SCD
				DRAWING NUMBER	
				00314	