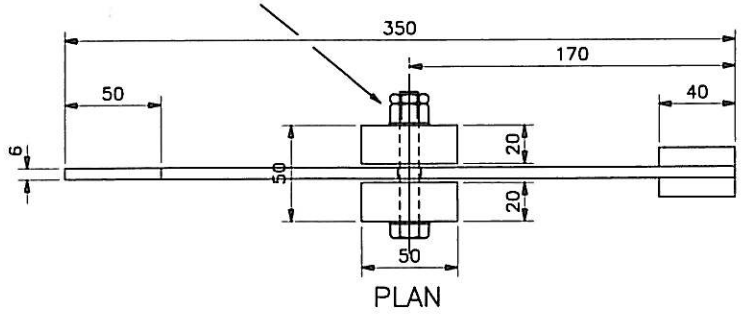
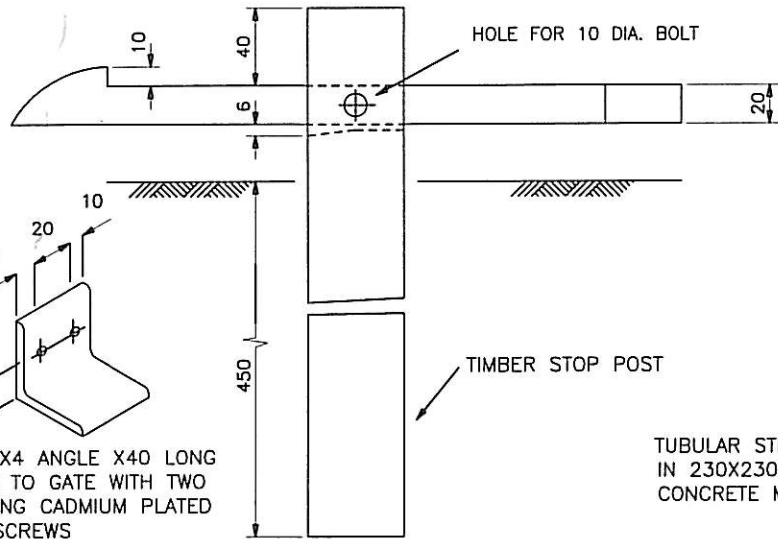


10 DIA. BOLT X 70 LONG COMPLETE WITH TWO WASHERS, ONE NUT AND LOCKNUT (ALTERNATIVELY ONE SELF-LOCKING NUT)



PLAN

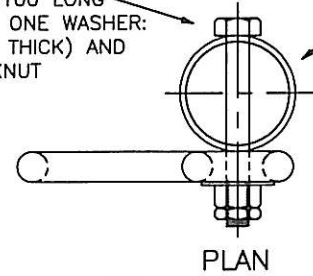


ELEVATION

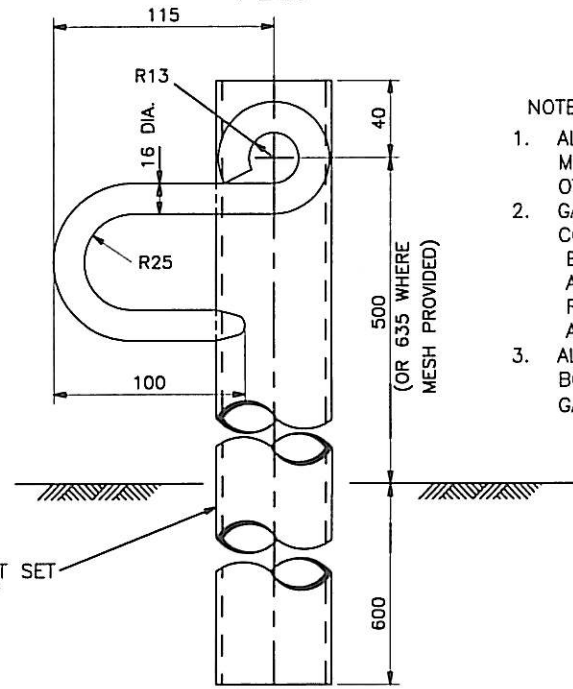
SELF LATCHING STOP POST FOR TIMBER GATES

12 DIA. BOLT X 100 LONG COMPLETE WITH ONE WASHER: (38 O/DIA X 2 THICK) AND NUT AND LOCKNUT

60.3 O/DIA. TUBE 3.2 MINIMUM WALL THICKNESS.



PLAN



ELEVATION

HOLDING BACK STOP POST FOR STEEL GATES

NOTES :

1. ALL DIMENSIONS ARE IN MILLIMETRES UNLESS OTHERWISE STATED.
2. GATE FITTINGS SHALL COMPLY WITH BS 3470 OR BS 5709 AS APPROPRIATE, AND ANY OTHER FURTHER REQUIREMENTS IN APPENDIX 1/15 OR 3/1.
3. ALL METAL FITTINGS AND BOLTS SHALL BE MILD STEEL GALVANIZED TO BS 729.

P1	03/00
Issue	Date