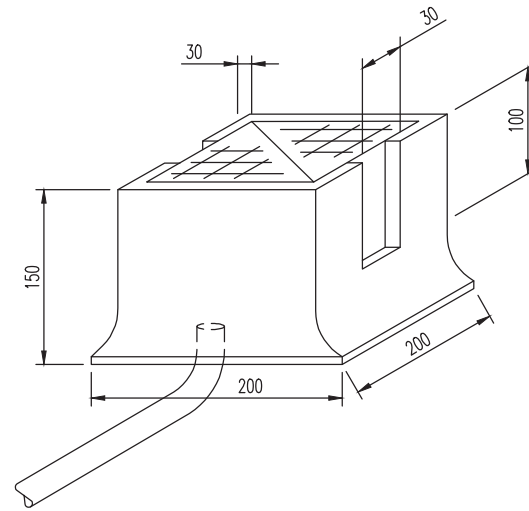
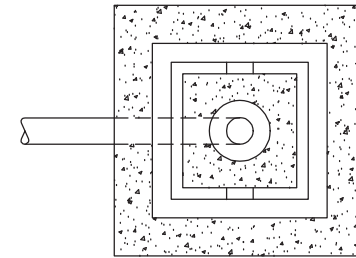


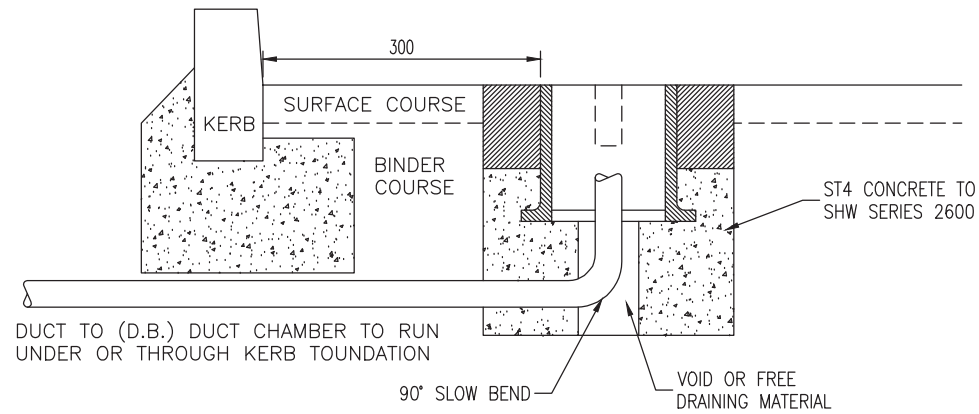
OPTION 3



ISOMETRIC SKETCH



PLAN



SECTION

CARRIAGEWAY CHAMBER FOR DETECTOR LOOP TAILS (L.B.)

END OF DUCT TO BE BELOW THE SLOTS
 BASE TO BE ABLE TO DRAIN
 SLOTS TO BE PARALLEL TO KERB LINE

TII PUBLICATION NUMBER: CC-SCD-01540

NOTES:

1. ALL DIMENSIONS ARE IN MILLIMETRES.
2. FOR OPTION 1 AND 2 SEE DRAWING RCD/1500/039.
3. FOR THE INSTALLATION OF DETECTOR LOOPS ON MOTORWAYS AND NATIONAL ROADS REFER TO DMRB HD 20.

NOT TO SCALE