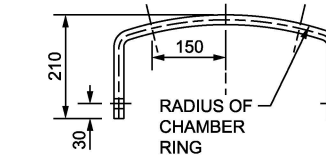
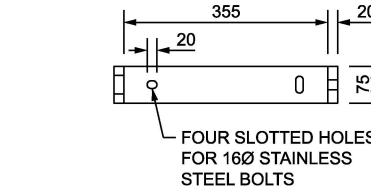
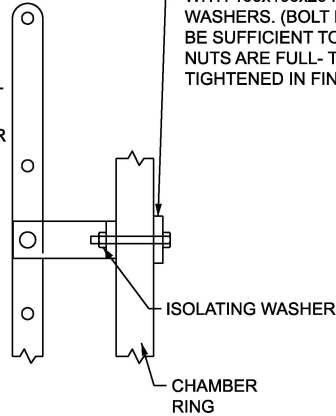
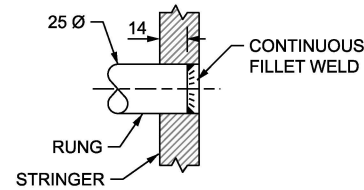


M16 STAINLESS STEEL BOLT WITH 100x100x20 PLATE & 40Ø WASHERS. (BOLT LENGTH SHALL BE SUFFICIENT TO ENSURE THAT NUTS ARE FULL- THREADED WHEN TIGHTENED IN FINAL POSITION).

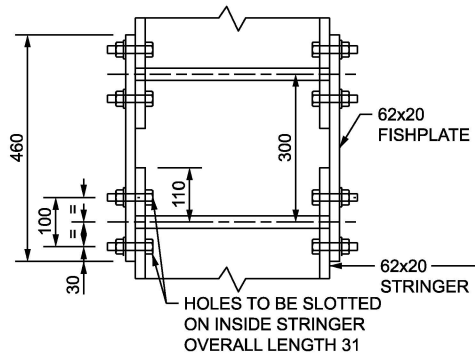


DETAILS OF LADDER STAY

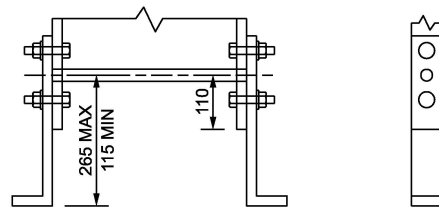
- NOTES:-
1. ALL DIMENSIONS ARE IN MILLIMETRES.
 2. LADDERS SHALL BE MANUFACTURED FROM STEEL OR GLASS REINFORCED PLASTIC.
 3. ALL STEEL FITTINGS TO IS EN 10084 AND TO BE PROTECTED BY HOT DIP GALVANISING.
 4. THREADED COMPONENTS TO BE GALVANISED.
 5. ALL WELDS ARE TO BE 6mm FILLET WELDS.
 6. LADDER MAY BE FABRICATED IN ONE LENGTH OR IN MULTIPLE LENGTHS AND BE JOINTED AS SHOWN.
 7. CHAIN HOOK & EYE TO BE SUPPLIED WITH 100 LONGx10 THK CLOSED LINK CHAIN.
 8. HANDHOLD AT HEIGHT 1500 MAX TO INVERT, 500 MIN TO TOP OF BENCHING.
 9. STAINLESS STEEL BOLTS, NUTS & WASHERS SHALL BE TO IS EN 10088-1, DESIGNATION 1.4401. ISOLATING WASHERS SHALL BE USED BETWEEN STAINLESS STEEL BOLTS & GALVANISED FITTINGS.



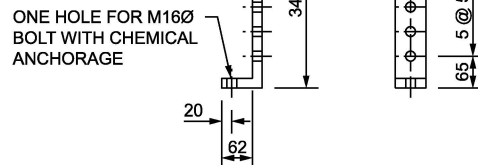
DETAIL OF FIXING RUNGS TO STRINGERS



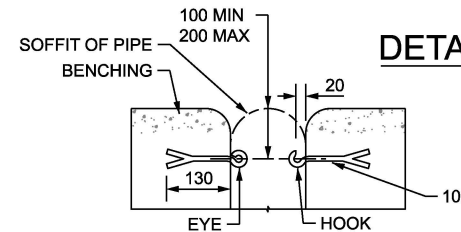
HOLES TO BE SLOTTED ON INSIDE STRINGER OVERALL LENGTH 31



TYPICAL STEEL LADDER

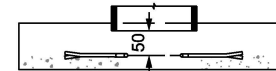


ADJUSTABLE LADDER FOOT

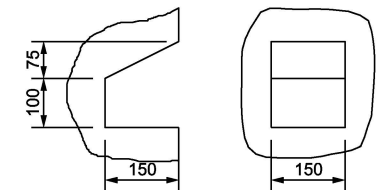
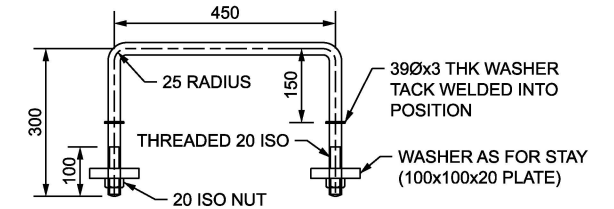


ELEVATION

PLAN DETAILS OF HOOK & EYE FOR SAFETY CHAIN



DETAILS OF HANDHOLD



DETAIL OF TOE HOLD

NOT TO SCALE



PUBLICATION TITLE

DRAINAGE CHAMBER FITTINGS - LADDER, TYPICAL ARRANGEMENT HANDHOLD AND SAFETY CHAIN

ACTIVITY

STREAM

STANDARD CONSTRUCTION DETAILS (SCD)

HISTORICAL REFERENCE

RCD/500/13

DOCUMENTATION SET

STANDARDS

PUBLICATION DATE

FEBRUARY 2024

PUBLICATION NUMBER

ACTIVITY

CC

STREAM

SCD

DRAWING NUMBER

00513