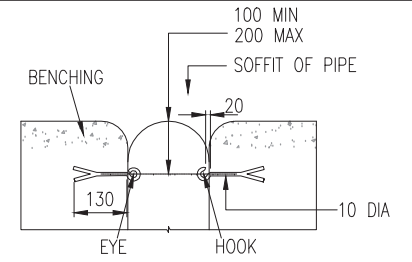
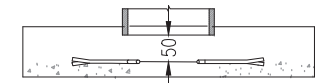


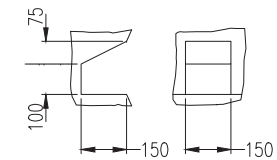
DETAILS OF LADDER STAY



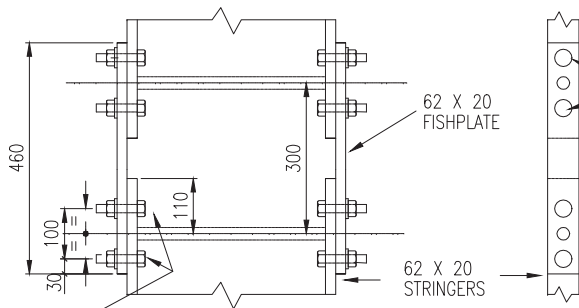
ELEVATION



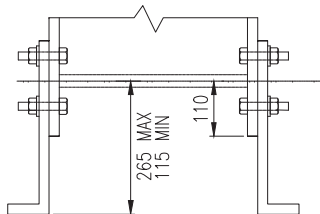
PLAN
DETAILS OF HOOK &
EYE FOR SAFETY CHAIN



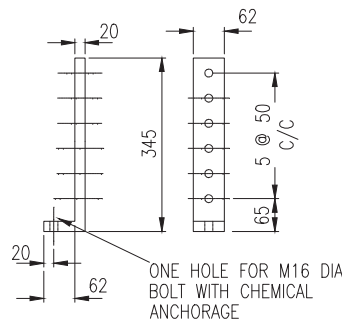
DETAIL OF TOE HOLD



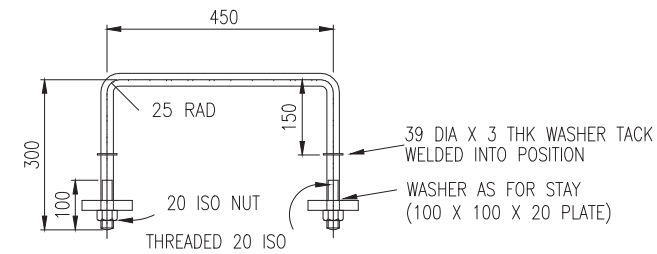
HOLES TO BE SLOTTED ON INSIDE STRINGER OVER ALL LENGTH 31



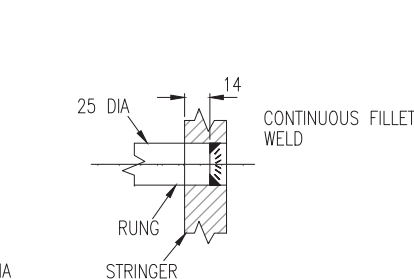
TYPICAL STEEL LADDER



ADJUSTABLE
LADDER FOOT



DETAILS OF HANDHOLD



DETAIL OF FIXING
RUNGS TO STRINGERS

NOTES:

1. ALL DIMENSIONS ARE IN MILLIMETRES.
2. LADDERS SHALL BE MANUFACTURED FROM STEEL OR GRP.
3. ALL STEEL FITTINGS TO IS EN 10084 AND TO BE PROTECTED BY HOT DIP GALVANISING.
4. THREADED COMPONENTS TO BE GALVANISED.
5. ALL WELDS ARE TO BE 6mm FILLET WELDS.
6. LADDER MAY BE FABRICATED IN ONE LENGTH OR IN MULTIPLE LENGTHS AND BE JOINTED AS SHOWN.
7. CHAIN HOOK & EYE TO BE SUPPLIED WITH 100 LONG x 10 THK CLOSED LINK CHAIN.
8. HANDHOLD AT HEIGHT 1500 MAX TO INVERT, 500 MIN TO TOP OF BENCHING.
9. STAINLESS STEEL BOLTS, NUTS & WASHERS SHALL BE TO IS EN 10088-1, DESIGNATION 1.4401. ISOLATING WASHERS SHALL BE USED BETWEEN STAINLESS STEEL BOLTS & GALVANISED FITTINGS.

NOT TO SCALE