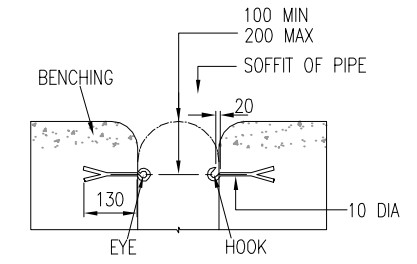
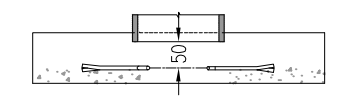


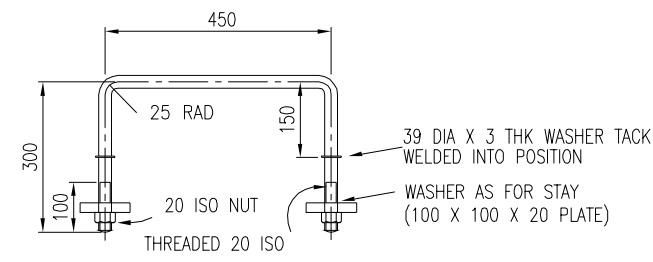
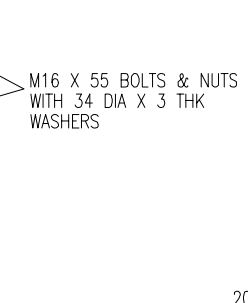
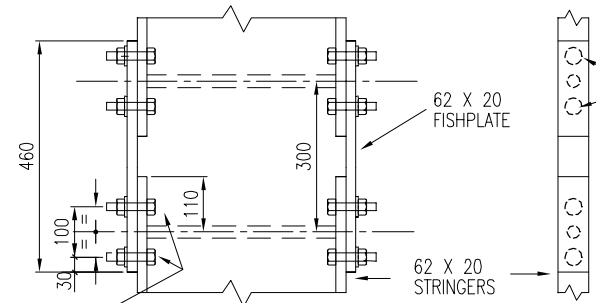
DETAILS OF LADDER STAY



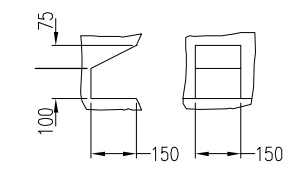
ELEVATION



PLAN
DETAILS OF HOOK & EYE FOR SAFETY CHAIN

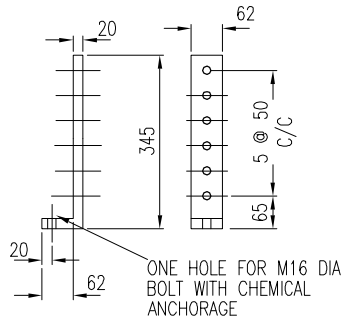
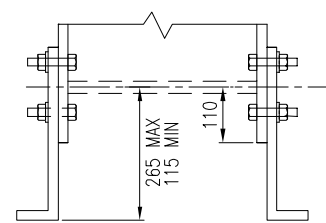


DETAILS OF HANDHOLD

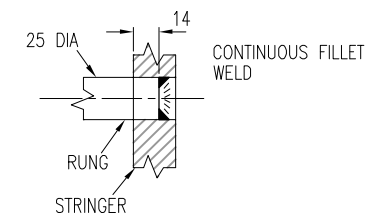


DETAIL OF TOE HOLD

HOLES TO BE SLOTTED ON INSIDE STRINGER OVER ALL LENGTH 31



ADJUSTABLE LADDER FOOT



DETAIL OF FIXING RUNGS TO STRINGERS

NOTES:

1. ALL DIMENSIONS ARE IN MILLIMETRES EXCEPT WHERE STATED.
2. ALL FITTINGS TO BE FABRICATED FROM STEEL TO IS EN 10084 AND TO BE PROTECTED BY HOT DIP GALVANISING.
3. THREADED COMPONENTS TO BE GALVANISED.
4. ALL WELDS ARE TO BE 6mm FILLET WELDS.
5. LADDER MAY BE FABRICATED IN ONE LENGTH OR IN MULTIPLE LENGTHS AND BE JOINTED AS SHOWN.
6. CHAIN HOOK & EYE TO BE SUPPLIED WITH 100 LONG x 10 THK CLOSED LINK CHAIN.
7. HANDHOLD AT HEIGHT 1500 MAX TO INVERT, 500 MIN TO TOP OF BENCHING.
8. STAINLESS STEEL BOLTS, NUTS & WASHERS SHALL BE TO IS EN 10088-1, DESIGNATION 1.4401. ISOLATING WASHERS SHALL BE USED BETWEEN STAINLESS STEEL BOLTS & GALVANISED FITTINGS.

NOT TO SCALE

P3	01/09
P2	10/07
P1	03/00
Issue	Date