

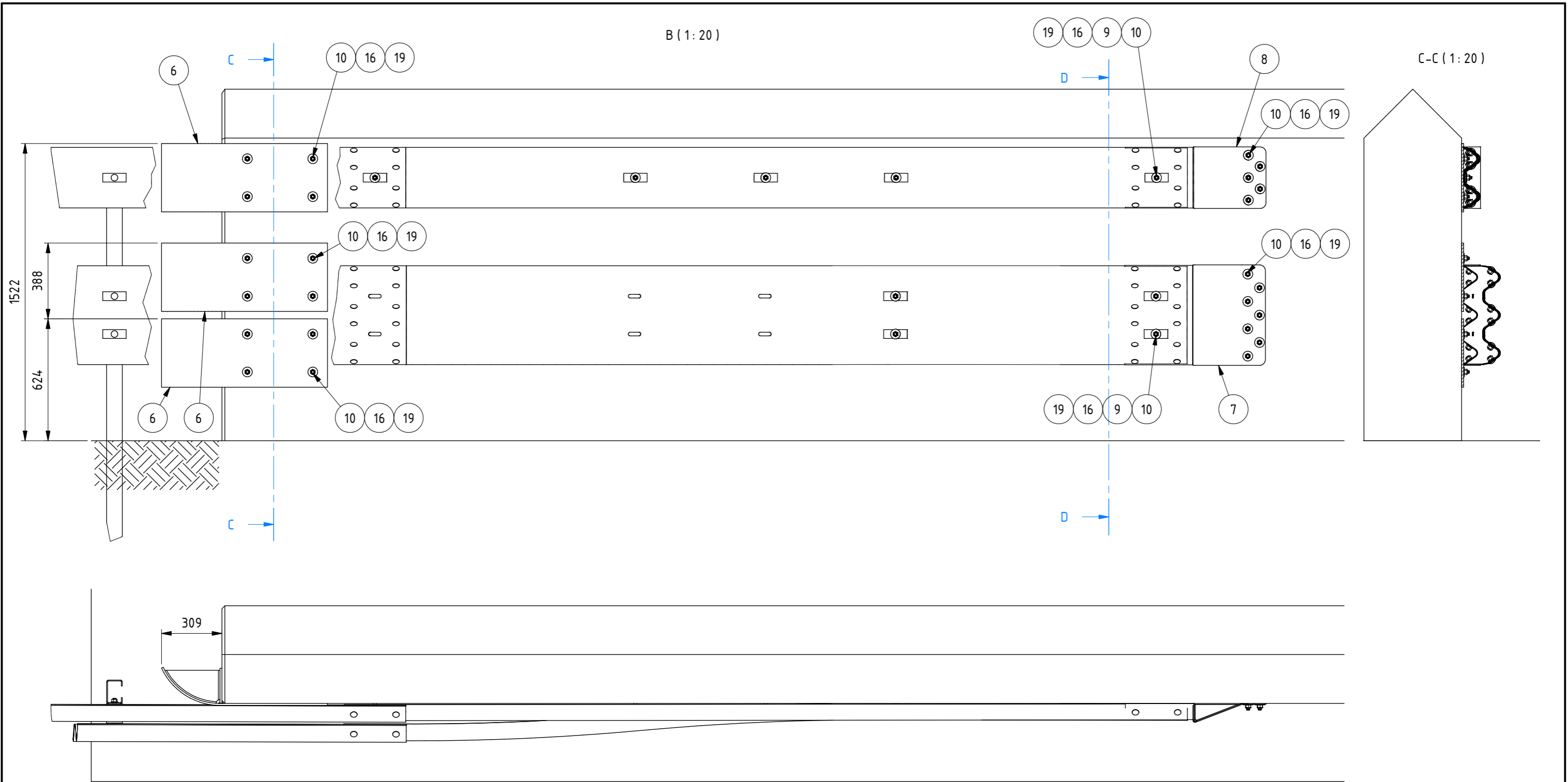
PARTS LIST							
ITEM	CODE	DRW N°	REV	DESCRIPTION	MATERIAL	WEIGHT[kg]	QTY
1	11.02165	-		PROFILE C120x80x30mm TH.4,75mm L=2400mm	S355 JR	27,51	11
2	10.00614	614		SPACER TH.4,75mm L=80mm	S355 JR	2,21	11
3, 4	12.02166	-		3W BEAM TH.2,8mm CC4000mm	S355 JR	71,34	7
5	12.02167	-		2W BEAM TH.2,8mm CC4000mm	S355 JR	44,83	7
6	10.01179	1179		BUMPER 350mm R320	S355 JR	38,82	3
7	10.00089	89		CONNECTION TERMINAL FOR 3W BEAM	S275 JR	14,31	1
8	10.00088	88		CONNECTION TERMINAL FOR 2W BEAM	S275 JR	9,25	1
9	14.00615	-		PLATE 120x45mm TH.4,75mm Ø18x30	S235 JR	0,18	42
10	25.02169	-		Anchor HILTI HSA-R2 M16x137 (40/25/-) - A2	A2	0,2	33
11	21.02170	-		RH SCREW M16x30 - 8.8 - tZn	8.8	0,09	80
12	21.02171	-		RH SCREW M16x45 - 8.8 - tZn	8.8	0,11	33
13	21.00616	-		HH SCREW ISO 4017 - M12x40 - 8.8 - tZn	8.8	0,05	22
14	22.00617	-		HEX. NUT ISO 4032 - M12 - 8Z - tZn	8	0,02	22
15	22.00146	-		HEX. NUT ISO 4032 - M16 - 8Z - tZn	8	0,04	113
16	22.00150	-		HEX. NUT ISO 4032 - M16 - A2-70	A2-70	0,04	33
17	23.00826	826		WASHER Ø17x35 M16 - 100HV	100 HV	0,02	113
18	23.00347	-		WASHER ISO 7093 A-12-200 HV	200 HV	0,02	44
19	23.01183	-		WASHER ISO 7093 A-16-200 HV-A2	A2	0,04	33

TII ASSESSED
DN-REQ-03081

NOTES:

1. Transition can be installed on approach (as shown) and on departure of the concrete wall.
2. Posts and beams must be positioned as for road safety barrier
3. Mechanical anchors HILTI or equivalent

DATE	17/05/2022	SCALE	1:50	PAPER SIZE	A3	CODE	D.02168
DRAWN	PASQUALETTO	APPROVED	STEVANATO			SHEET N°	1
						DRAWING N°	2168
OBEX Systems Limited				Transition SBH4b-wall (Fracasso Ri DF3W003 - wall 1,8m)		D_20220512_165053.dwg	



B (1:20)

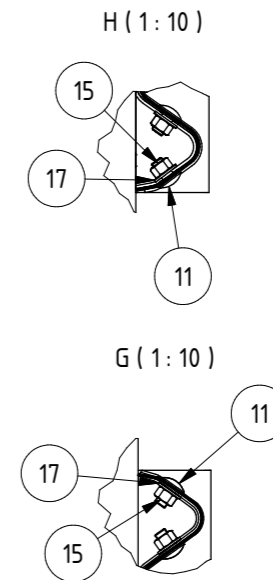
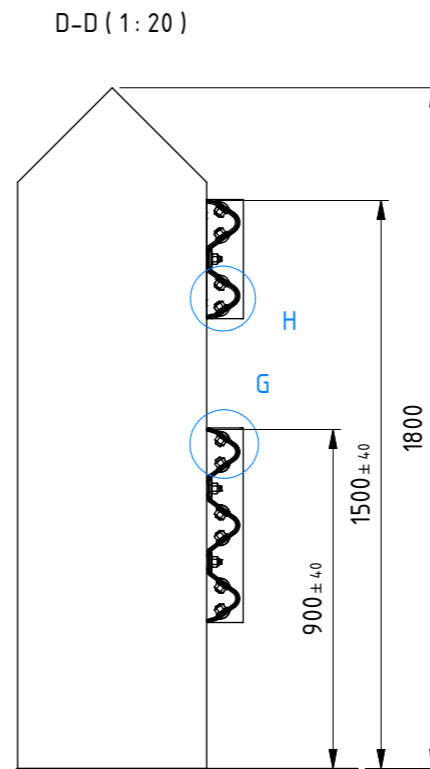
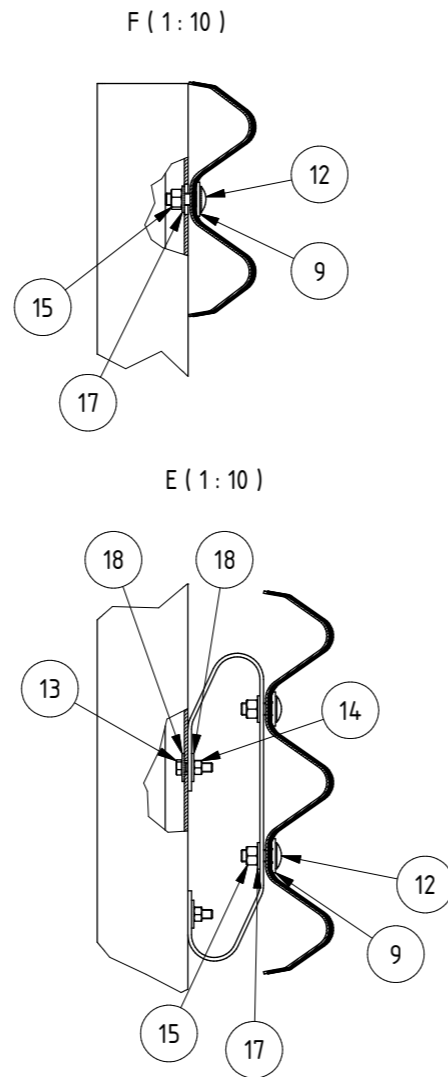
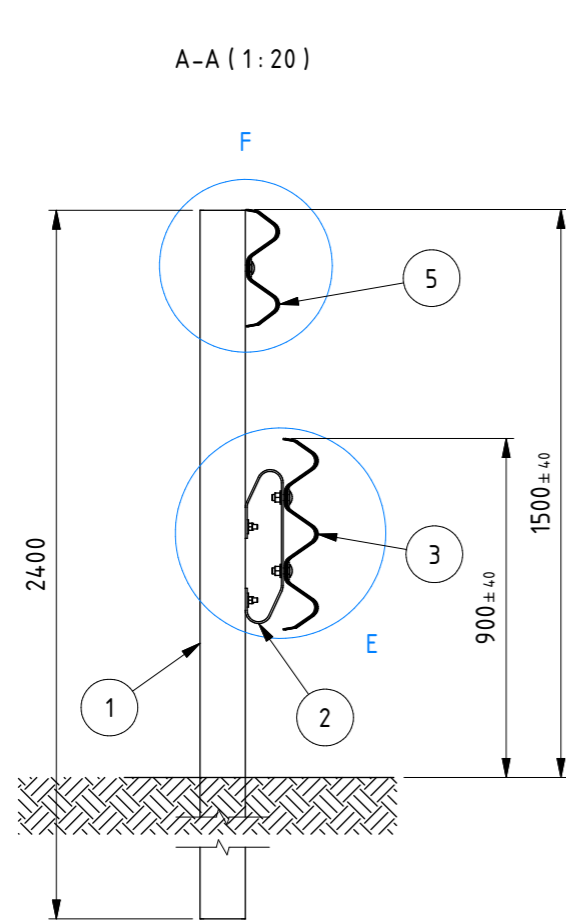
C-C (1:20)

TII ASSESSED
DN-REQ-03081

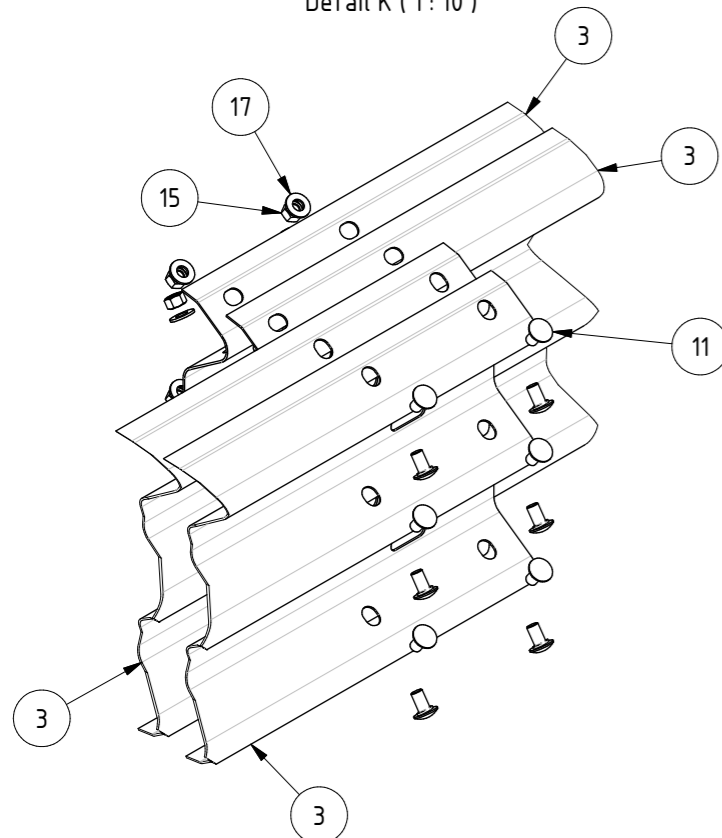
DATE	17/05/2022	SCALE 1:20	PAPER SIZE A3		CODE D.02168
DRAWN	PASQUALETTO				SHEET N° 2
APPROVED	STEVANATO				DRAWING N° 2168
OBEX Systems Office B, Teach Dara, Academy Street, Kildare Town, Co.Kildare, Ireland www.obexsystems.com OBEX Systems Limited		Transition SBH4b-wall (Fracasso Ri DF3W003 - wall 1,8m)			

D_20220512_165053.dwg

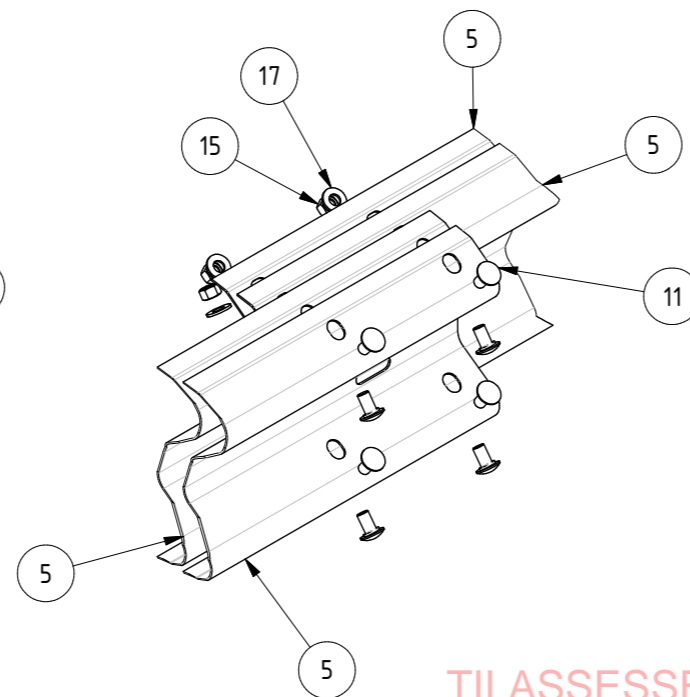
SYSTEM AND COMPONENTS ARE COVERED BY DESIGN REGISTRATION AND PATENT APPLICATIONS



Detail K (1:10)




Detail J (1:10)



TII ASSESSED
DN-REQ-03081

ITEM	CODE	DRW N°	REV	DESCRIPTION	MATERIAL	WEIGHT[kg]	QTY
19	23.01183			WASHER ISO 7093 A-16-200 HV-A2	A2	0,04	33
18	23.00347			WASHER ISO 7093 A-12-200 HV	200 HV	0,02	44
17	23.00826	826		WASHER Ø17x35 M16 - 100HV	100 HV	0,02	113
16	22.00150			HEX. NUT ISO 4032 - M16 - A2-70	A2-70	0,04	33
15	22.00146			HEX. NUT ISO 4032 - M16 - 8Z - tZn	8	0,04	113
14	22.00617			HEX. NUT ISO 4032 - M12 - 8Z - tZn	8	0,02	22
13	21.00616			HH SCREW ISO 4017 - M12x40 - 8.8 - tZn	8.8	0,05	22
12	21.02171	-		RH SCREW M16x45 - 8.8 - tZn	8.8	0,11	33
11	21.02170	-		RH SCREW M16x30 - 8.8 - tZn	8.8	0,09	80
10	25.02169	-		Anchor HILTI HSA-R2 M16x137 (40/25/-) - A2	A2	0,2	33
9	14.00615	-		PLATE 120x45mm TH.4,75mm Ø18x30	S235 JR	0,18	42
8	10.00088	88		CONNECTION TERMINAL FOR 2W BEAM	S275 JR	9,25	1
7	10.00089	89		CONNECTION TERMINAL FOR 3W BEAM	S275 JR	14,31	1
6	10.01179	1179		BUMPER 350mm R320	S355 JR	38,82	3
5	12.02167	-		2W BEAM TH.2,8mm CC4000mm	S355 JR	44,83	7
3, 4	12.02166	-		3W BEAM TH.2,8mm CC4000mm	S355 JR	71,34	7
2	10.00614	614		SPACER TH.4,75mm L=80mm	S355 JR	2,21	11
1	11.02165	-		PROFILE C120x80x30mm TH.4,75mm L=2400mm	S355 JR	27,51	11

PARTS LIST

DATE	17/05/2022	SCALE	PAPER SIZE	CODE
DRAWN	PASQUALETTO	1:20	A3	D.02168
APPROVED	STEVANATO			
 Office B, Teach Dara, Academy Street, Kildare Town, Co.Kildare, Ireland www.obexsystems.com OBEX Systems Limited				SHEET N°
				3
Transition SBH4b-wall (Fracasso Ri DF3W003 - wall 1,8m)				DRAWING N°
				2168

D_20220512_165053.dwg

SYSTEM AND COMPONENTS ARE COVERED BY DESIGN REGISTRATION AND PATENT APPLICATIONS