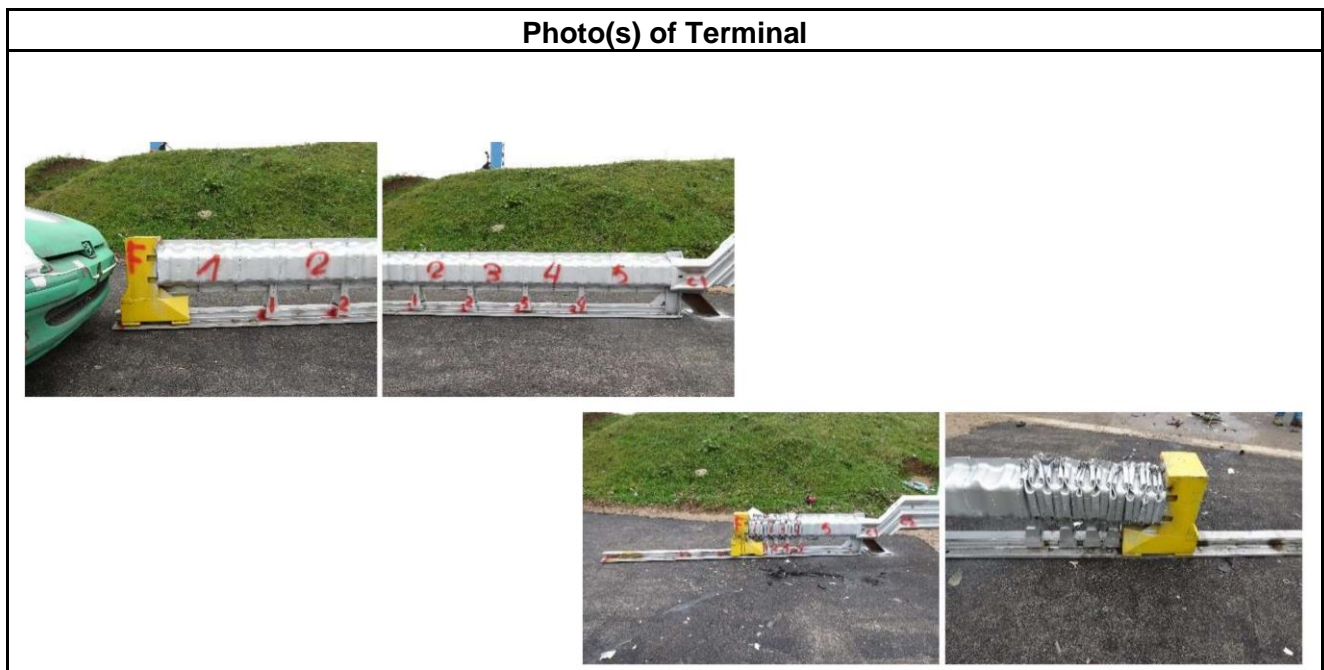


GENERAL INFORMATION	
Date of approval:	January 2024
Product Name:	SMA Ermes T2

SUPPLIER INFORMATION:	
Supplier Name:	INDUSTRY S.M.L
Website:	AMS Industrial Automation (amssrl.com)

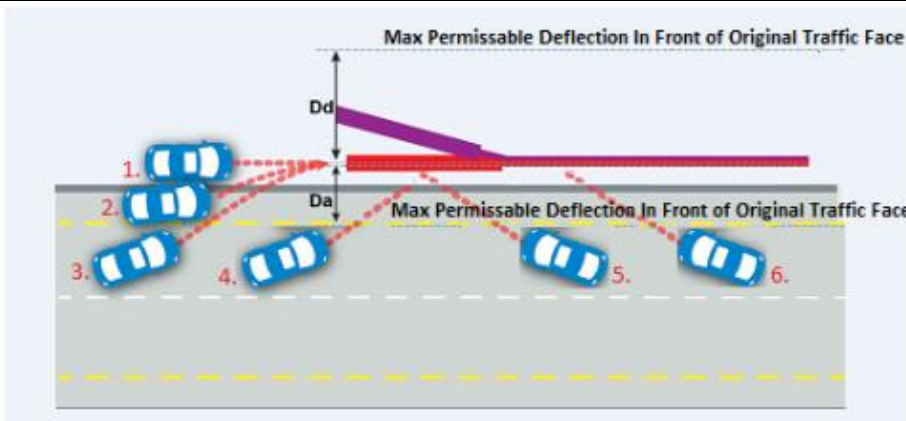
PRODUCT INFORMATION	
Performance class:	T80 (in a range of terminals)
Direction class:	BDT (in a range of terminals)
Single or Double Sided:	Single Sided (due to tests being carried out with single sided barrier installations)
Impact Severity Level:	B
Permitted Use on TII Network	
Speed Limit of Road (km/h)	Direction of Installation
Up to 80	Approach and Departure (considering the range of terminals)



Properties of Barrier Tested With	
Manufacturer:	Marcegaglia
Product Name:	Tubosider H2-W5
Product Description:	Two different barriers, a 2-waves single sided and a 3-waves single sided
Containment Level:	H2
Working Width:	W5
Dynamic Deflection:	1.09
Impact Severity Level:	B

TESTING RESULTS:

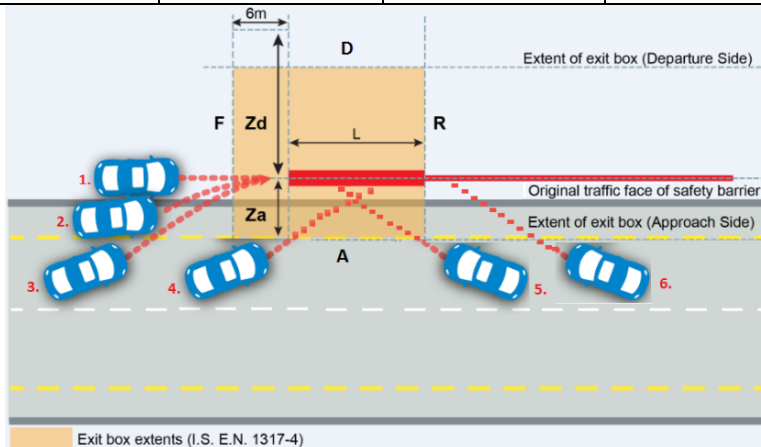
Permanent Lateral Displacement (PLD)				
#	Test Code	D _a (m)	D _d (m)	PLD Class (X#Y#)
1	TT1.2.80	0.0	0.03	X ₁ Y ₁
2	TT2.1.80	0.5	0.5	X ₁ Y ₁
4	TT4.2.110	0.016	0.16	X ₁ Y ₁
PLD Class of Product:				X ₁ Y ₁



*Refer to Figure 4 of CEN/TS 1317-7:2023 for details of Vehicle Approach Paths and Impact Angles

**Refer to Table 5 of CEN/TS 1317-7:2023 for details of required tests for the performance class T80 with a T100 parent terminal

Exit Box				
#	Test Code	Approach Side Z _a (m)	Departure Side Z _d (m)	Exit Box Class, Z _#
1	TT1.2.80	0.9	0.0	Z ₁
2	TT2.1.80	6.0	0.0	Z ₂
4	TT4.2.110	1.9	0.0	Z ₁
Exit Box of Product				Z ₂



*Refer to Figure 4 of CEN/TS 1317-7:2023 for details of Vehicle Approach Paths and Impact Angles

**Refer to Table 5 of CEN/TS 1317-7:2023 for details of required tests for the performance class T80 with a T100 parent terminal