

GENERAL INFORMATION	
Date of approval:	18/04/2017
Product Name:	Obex MT P4

MANUFACTURER INFORMATION:	
Manufacturer Name:	Obex Systems Ltd. Distillers Building
Website:	www.obexsystems.com

PRODUCT INFORMATION	
Performance class:	T110
Direction class:	BDT (Bi-Directional Terminal)
Single or Double Sided:	Double Sided
Impact Severity Level:	B
Permitted Use on TII Network	
Speed Limit of Road (km/h)	Direction of Installation
Up to 120	Approach and Departure





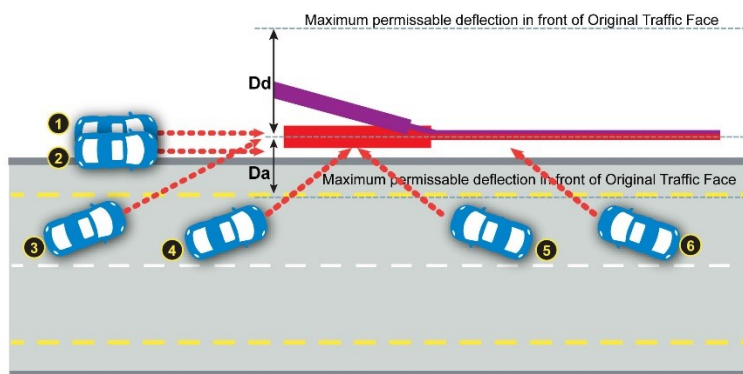
<b>Properties of Barrier Tested With</b>	
Manufacturer:	Unknown
Product Name:	Easy Rail 1.33
Product Description:	A modified version of Easy Rail W-Beam Barrier
Containment Level:	N2 and H1
Working Width:	W2 for N2 and W3 for H1
Dynamic Deflection:	Unknown
Impact Severity Level:	A

**TESTING RESULTS:**

**Permanent Lateral Displacement (PLD)**

#	Test Code	$D_a$ (m)	$D_d$ (m)	PLD Class (X#Y#)
1	TT1.3.110	0.3	0.2	X1Y1 (S0.5 T0.5)
2	TT2.1.100	0.5	0.2	X1Y1 (S0.5 T0.5)
3	TT3.3.110	0.5	2	X1Y2 (S0.5 T2.0 U0.5)
4	TT4.3.110	0.3	0.4	X1Y1 (S0.5 T0.5)
5	TT5.1.100	0.5	0.8	X1Y1 (S0.5 T0.5)
6	TT6.3.110	0.5	0.5	X1Y1 (S0.5 T0.5)

PLD Class of Product: **X1Y2 (S0.5 T2.0)**



**Exit Box**

#	Test Code	Approach Side $Z_a$ (m)	Departure Side $Z_d$ (m)	Exit Box Class, Z#
1	TT1.3.110	0.6	1.6	Z1
2	TT2.1.100	5.1	0	Z2
3	TT3.3.110	0	4	Z1
4	TT4.3.110	1	0.9	Z1
5	TT5.1.100	0.8	1	Z1
6	TT6.3.110	2	0	Z1
Exit Box Class of Product		Za2	Zd1	Z2

