

GENERAL INFORMATION	
Date of approval:	December 2023
Product Name:	Obex LT T110 P4 VRS Terminal

SUPPLIER INFORMATION:	
Supplier Name:	Obex Systems Ltd
Website:	www.obexsystems.com

PRODUCT INFORMATION	
Performance class:	T110
Direction class:	UDTA
Single or Double Sided:	Single
Impact Severity Level:	B
Permitted Use on TII Network	
Speed Limit of Road (km/h)	Direction of Installation
Up to 120	Approach (Uni-directional terminal)

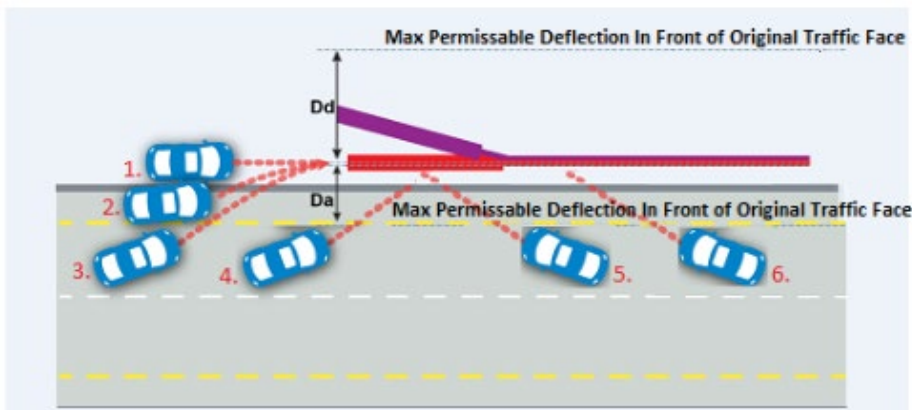


Properties of Barrier Tested With	
Manufacturer:	Aximum
Product Name:	Evol
Product Description:	Single sided w-beam barrier with 2.0m post spacing
Containment Level:	N2
Working Width:	W3
Dynamic Deflection:	0.9m
Impact Severity Level:	A

TESTING RESULTS:

Permanent Lateral Displacement (PLD)				
#	Test Code	D _a (m)	D _d (m)	PLD Class (x#y#)
1	TT1.3.110	0.5	1	X1Y1
2	TT2.1.100	0.5	1	X1Y1
3	TT3.3.110	0.5	2	X1Y1
4	TT4.3.110	0.5	1	X1Y1

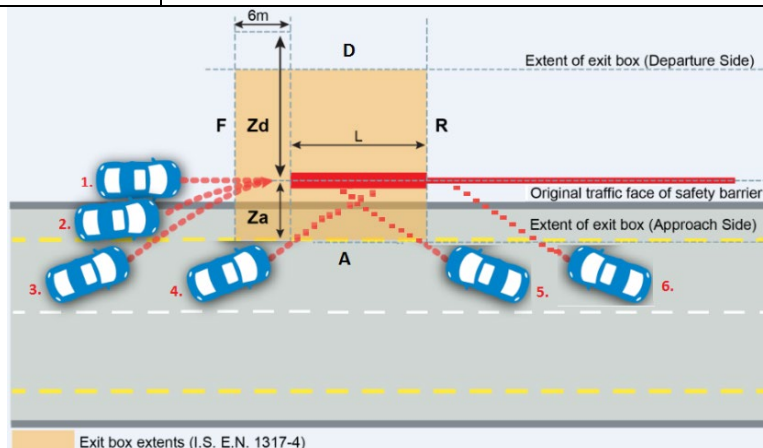
PLD Class of Product: X1Y1



*Refer to Figure 2 of prEN 1317-7:2014 for details of Vehicle Approach Paths and Impact Angles

Exit Box				
#	Test Code	Approach Side Z _a (m)	Departure Side Z _d (m)	Exit Box Class, Z#
1	TT1.3.110	4	4	Z1
2	TT2.1.100	4	4	Z1
3	TT3.3.110	4	4	Z1
4	TT4.3.110	4	4	Z1

Exit Box of Product Z1



*Refer to Figure 2 of prEN 1317-7:2014 for details of Vehicle Approach Paths and Impact Angles