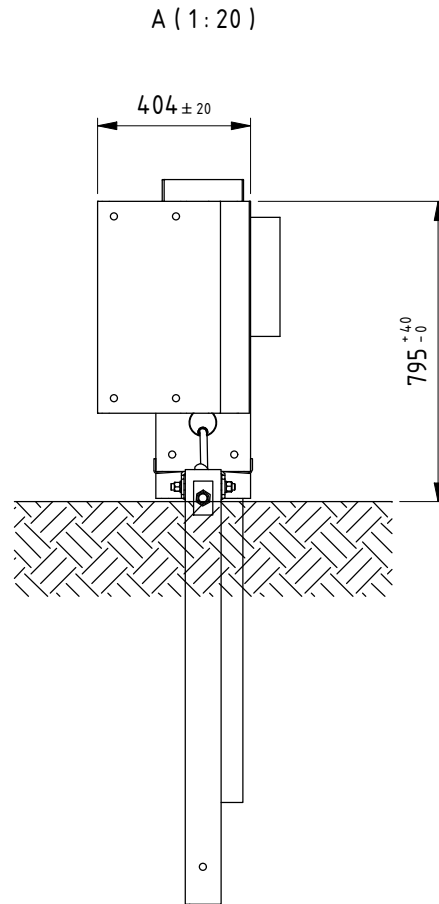
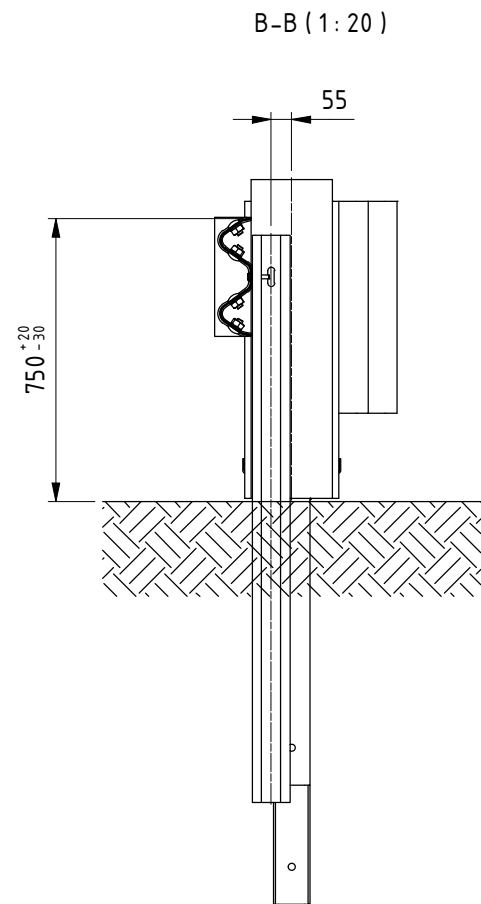


Traffic side
Traffic Direction - Approach - UDTA



ITEM	CODE	DRW N	REV	DESCRIPTION	MATERIAL	WEIGHT[kg]	QTY
17	23.00826	826		WASHER 17x35 M16 - 100HV	100 HV	0,02	8
16	23.00147			WASHER ISO 7089 - 16 - 200 HV	200 HV	0,01	10
15	22.00632			HEX. NUT M16 (wrench opening 30) - 5	5	0,07	40
14	22.00146			HEX. NUT ISO 4032 - M16 - 8Z - tZn	8	0,04	5
13	21.00631			RH SCREW M16x30 - 5.8	5.8	0,09	40
12	21.00145			HH SCREW ISO 4017 - M16x45 - 8.8 - tZn	8.8	0,11	5
11	23.01343			WASHER ISO 7093A - 10 - 100 HV	100 HV	0,01	8
10	22.01342			HEX. NUT ISO 4032 - M10 - 6Z - tZn	6	0,01	8
9	21.00965			HH SCREW ISO 4017 - M10x50 - 6.8 - tZn	6.8	0,04	8
7	10.01341	1341		PLATE 80x40mm TH.5,0mm 12	S235 JR	0,12	8
4	12.00491	491		2W BEAM TH.2,6mm CC4000mm	S355 MC	4,183	4
3	11.00963	963		PROFILE C100x50x25mm TH.5,0mm L=1500mm	S355 MC	12,71	8
2	10.00088	88		CONNECTION TERMINAL FOR 2W BEAM	S275 JR	9,25	1
1	C.02279	2279		Modular Safety Device MSD-LT 22M-S			1

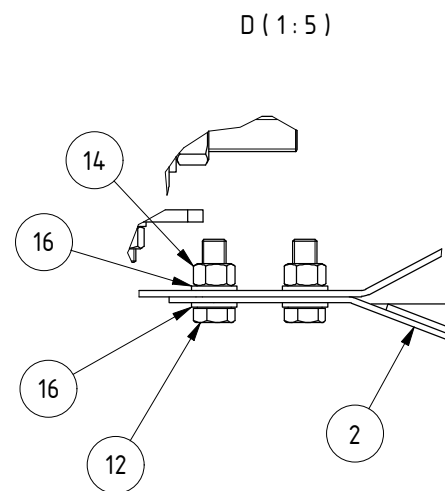
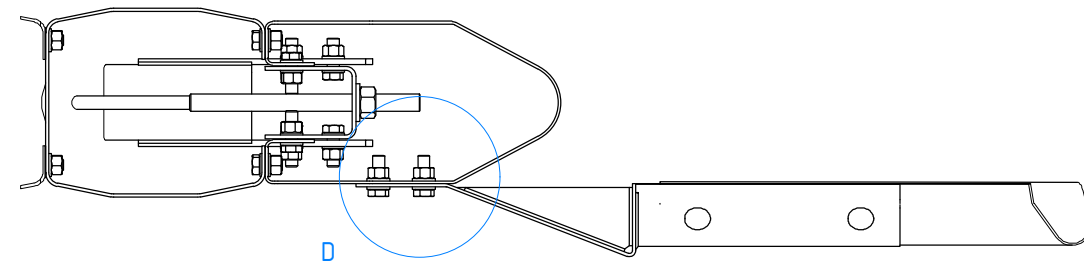
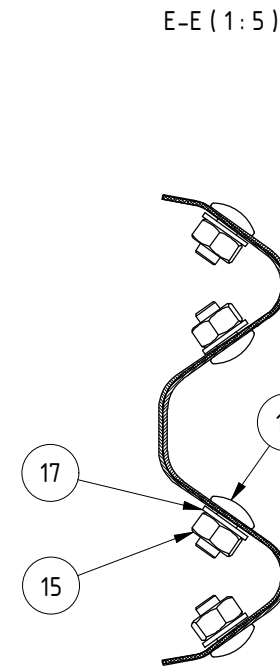
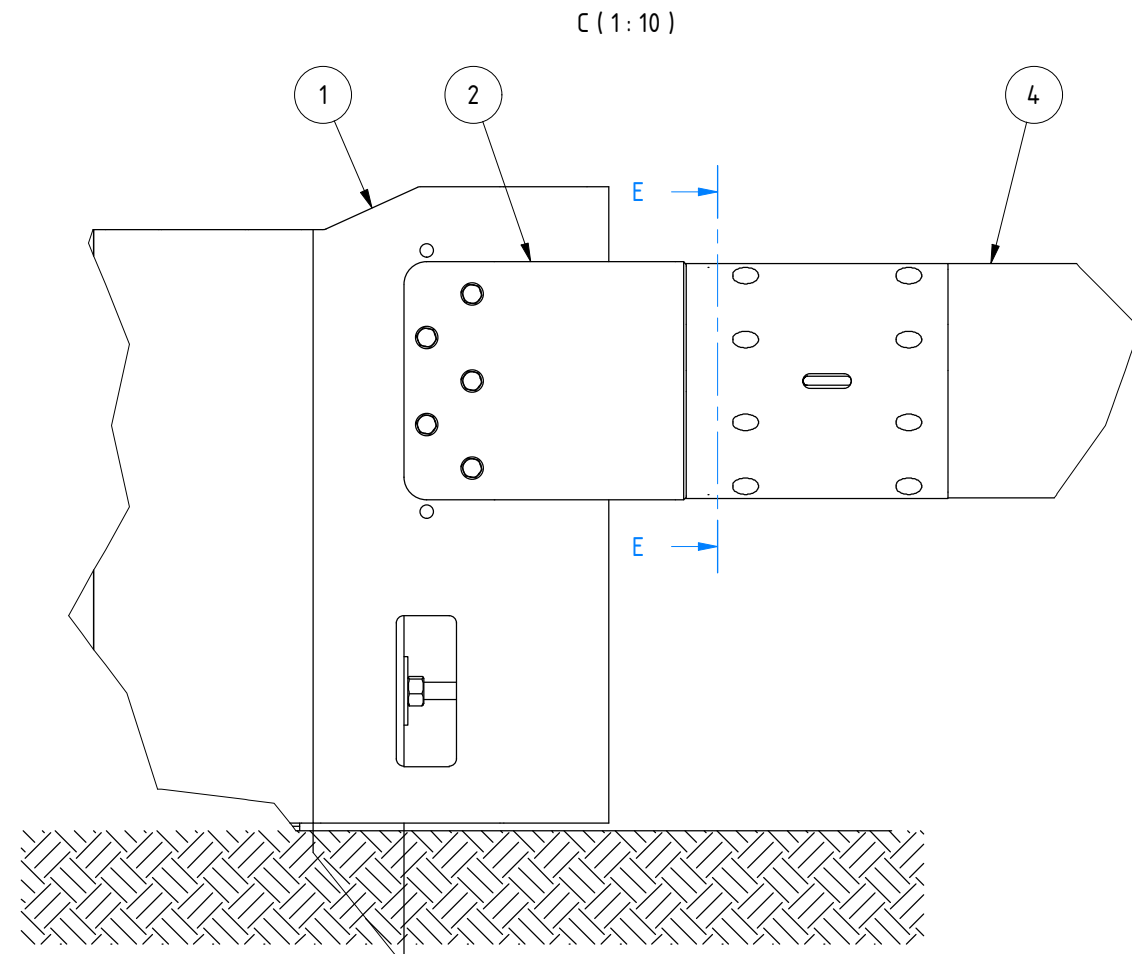
PARTS LIST

DATE	30/11/2023	SCALE	PAPER SIZE	CODE
DRAWN	PASQUALETTO	1:100	A3	
APPROVED	STEVANATO			
 5 Lakeviewhill, Bushypark, Galway City, Co. Galway, H91 PD7H, Ireland www.obexsystems.com OBEX Systems Limited				1
				Terminal P4 on SBN2W3 (MSD 22M-S2w - Aximum EVOL GS 2.0)
				2573

TII ASSESSED
DN-REQ-03080

D_20231130_183822.dwg

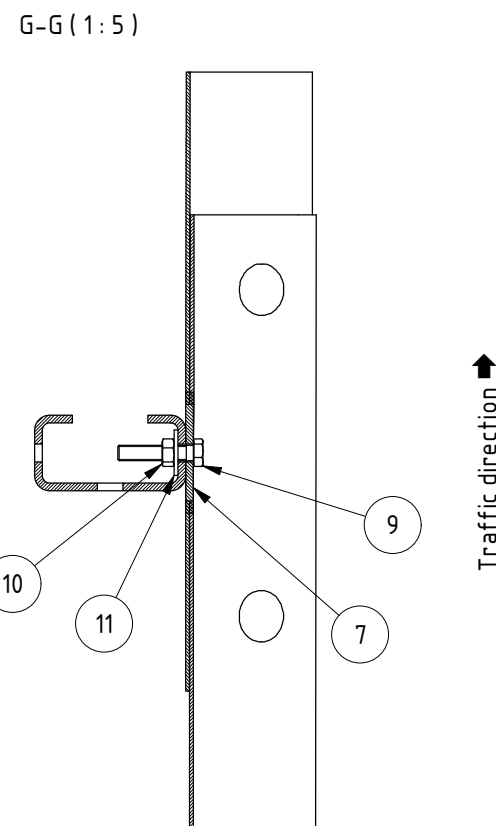
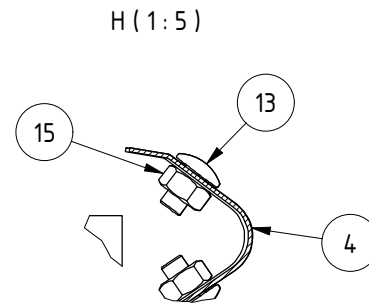
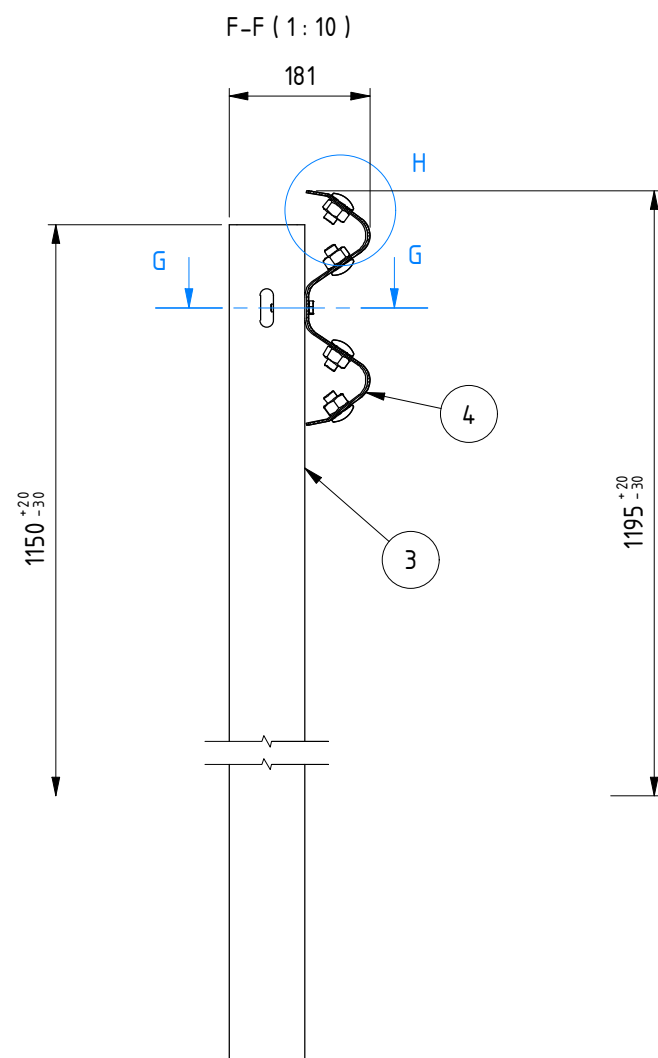
SYSTEM AND COMPONENTS ARE COVERED BY DESIGN REGISTRATION AND PATENT APPLICATIONS




ITEM	CODE	DRW N	REV	DESCRIPTION	MATERIAL	WEIGHT[kg]	QTY
17	23.00826	826		WASHER 17x35 M16 - 100HV	100 HV	0,02	8
16	23.00147			WASHER ISO 7089 - 16 - 200 HV	200 HV	0,01	10
15	22.00632			HEX. NUT M16 (wrench opening 30) - 5	5	0,07	40
14	22.00146			HEX. NUT ISO 4032 - M16 - 8Z - tZn	8	0,04	5
13	21.00631			RH SCREW M16x30 - 5.8	5.8	0,09	40
12	21.00145			HH SCREW ISO 4017 - M16x45 - 8.8 - tZn	8.8	0,11	5
11	23.01343			WASHER ISO 7093A - 10 - 100 HV	100 HV	0,01	8
10	22.01342			HEX. NUT ISO 4032 - M10 - 6Z - tZn	6	0,01	8
9	21.00965			HH SCREW ISO 4017 - M10x50 - 6.8 - tZn	6.8	0,04	8
7	10.01341	1341		PLATE 80x40mm TH.5,0mm 12	S235 JR	0,12	8
4	12.00491	491		2W BEAM TH.2,6mm CC4000mm	S355 MC	4,183	4
3	11.00963	963		PROFILE C100x50x25mm TH.5,0mm L=1500mm	S355 MC	12,71	8
2	10.00088	88		CONNECTION TERMINAL FOR 2W BEAM	S275 JR	9,25	1
1	C.02279	2279		Modular Safety Device MSD-LT 22M-S		537,71	1

PARTS LIST						
DATE	30/11/2023	SCALE	PAPER SIZE			CODE
DRAWN	PASQUALETTO	1:10	A3			
APPROVED	STEVANATO					SHEET N
 Office B, Teach Dara, Academy Street, Kildare Town, Co.Kildare, Ireland www.obexsystems.com OBEX Systems Limited						2
						DRAWING N
Terminal P4 on SBN2W3 (MSD 22M-S2w - Aximum EVOL GS 2.0)						2573

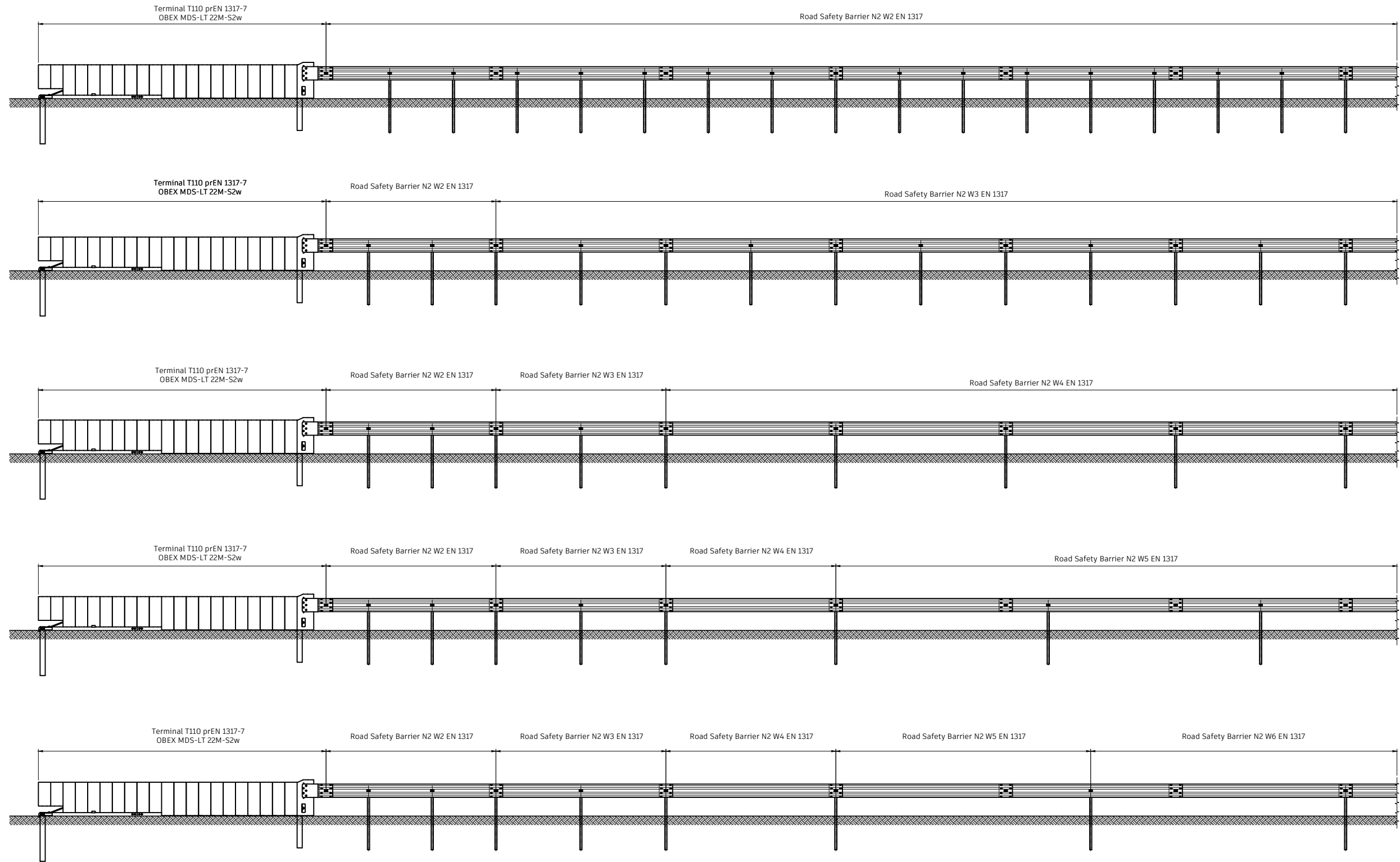
D_20231130_183822.dwg



ITEM	CODE	DRW N	REV	DESCRIPTION	MATERIAL	WEIGHT[kg]	QTY
17	23.00826	826		WASHER 17x35 M16 - 100HV	100 HV	0,02	8
16	23.00147			WASHER ISO 7089 - 16 - 200 HV	200 HV	0,01	10
15	22.00632			HEX. NUT M16 (wrench opening 30) - 5	5	0,07	40
14	22.00146			HEX. NUT ISO 4032 - M16 - 8Z - tZn	8	0,04	5
13	21.00631			RH SCREW M16x30 - 5.8	5.8	0,09	40
12	21.00145			HH SCREW ISO 4017 - M16x45 - 8.8 - tZn	8.8	0,11	5
11	23.01343			WASHER ISO 7093A - 10 - 100 HV	100 HV	0,01	8
10	22.01342			HEX. NUT ISO 4032 - M10 - 6Z - tZn	6	0,01	8
9	21.00965			HH SCREW ISO 4017 - M10x50 - 6.8 - tZn	6.8	0,04	8
7	10.01341	1341		PLATE 80x40mm TH.5,0mm 12	S235 JR	0,12	8
4	12.00491	491		2W BEAM TH.2,6mm CC4000mm	S355 MC	4,183	4
3	11.00963	963		PROFILE C100x50x25mm TH.5,0mm L=1500mm	S355 MC	12,71	8
2	10.00088	88		CONNECTION TERMINAL FOR 2W BEAM	S275 JR	9,25	1
1	C.02279	2279		Modular Safety Device MSD-LT 22M-S		537,71	1

PARTS LIST				
DATE	SCALE	PAPER SIZE	CODE	
30/11/2023	1:10	A3		
DRAWN PASQUALETTO				
APPROVED STEVANATO				
 OBEX Systems Limited <small>Office B, Teach Dara, Academy Street, Kildare Town, Co.Kildare, Ireland www.obexsystems.com</small>			Terminal P4 on SBN2W3 (MSD 22M-S2w - Aximum EVOL GS 2.0)	
			SHEET N 3 DRAWING N 2573	

D_20231130_183822.dwg



DIRECTION OF TRAFFIC - UDTA →

DATE	30/11/2023	SCALE 1:100	PAPER SIZE A3		PROJECT
DRAWN	PASQUALETTO				SHEET N° 1
APPROVED	STEVANATO				
OBEX Systems Limited <small>5 Lakeviewhill, Bushypark, Galway City, Co. Galway, H91 PD7H, Ireland www.obexsystems.com</small>		Terminal MSD-LT connections to Road Safety Barriers - System progression from N2W2			