

# Departures from Standards 2022

Esther Madden

Transport Infrastructure Ireland

TII Standards Training 2022

19<sup>th</sup> May 2022

# Overview

1. Review of Standard
2. Recent Changes to the Departures Portal
3. Typical Access Issues
4. Demo



Bonneagar Iompair Éireann  
Transport Infrastructure Ireland

## TII Publications



---

### Departures from Standards

**GE-GEN-01005**

April 2021

# Review of Standard

# GE-GEN-01005 Departures from Standards

## **What is a Departure from Standard**

A Departure from Standard is defined as a deviation from the requirements of TII Standards and may mean any of the following:

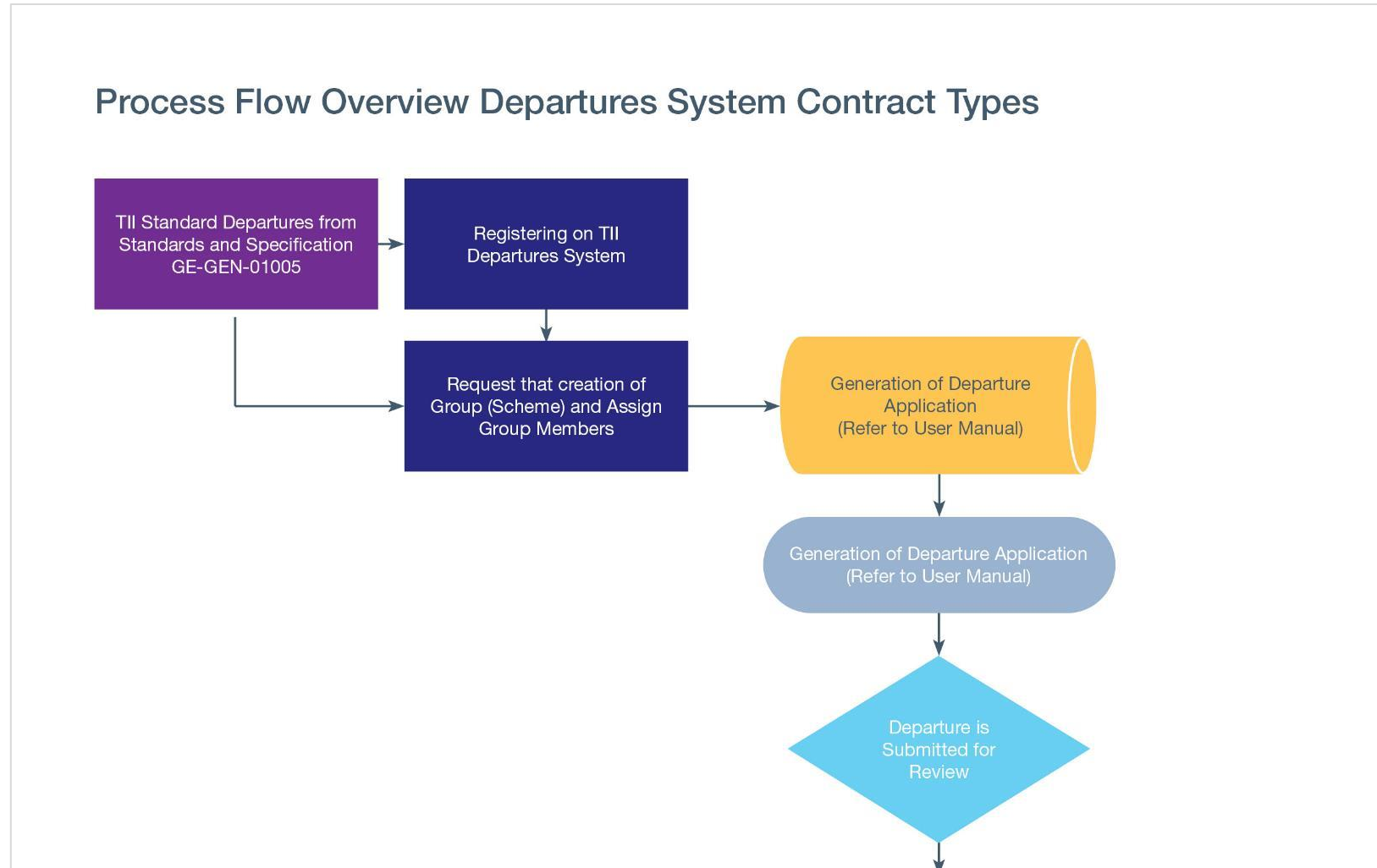
- a) The use of technical design standards and/or specifications other than those in TII Standards;
- b) The use of a set of requirements or additional criteria for any aspect of the works for which requirements are not defined in the Specification or Requirements for Measurement and Pricing;
- c) The use of a technical design standard or specification in a manner or circumstance which is not permitted or provided for in such directive or specification;
- d) The use of a combination of Relaxations as set out in the relevant Standards;
- e) A combination of any of the above.

# GE-GEN-01005 Departures from Standards

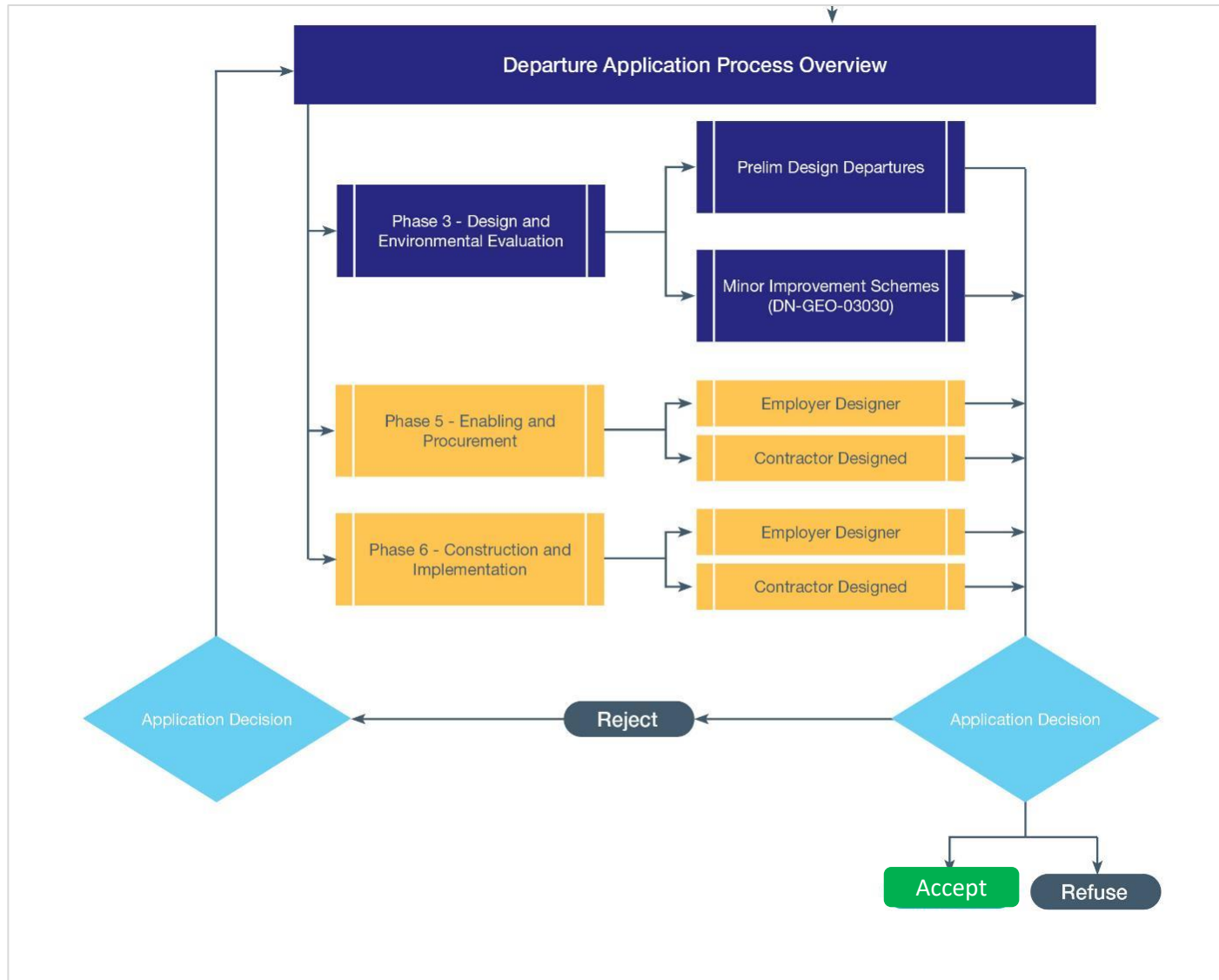
## Submission of Departure Applications

- Responsibility for the submission of Departures and their implementation where **accepted** (including any conditions) rests with the relevant road authority. This may be managed on their behalf by third parties in line with any contractual arrangements in place.
- For the purposes of this Standard, the Relevant Road Authority shall mean:
  - a) For national road projects, either the Lead Local Authority or TII, as defined in the Contract;
  - b) For Motorway and Maintenance Contractors (MMaRCs), TII
  - c) For PPP Concessions, either the PPP Company or TII.
- Third parties may submit Departure Applications with the consent of the Relevant Road Authority
- Any Departure from the mandatory requirements of TII Standards must be formally accepted by TII prior to incorporation into the design and works as outlined in this Standard. Acceptance cannot be given retrospectively.

# GE-GEN-01005 Departures from Standards



# GE-GEN-01005 Departures from Standards



# GE-GEN-01005 Departures from Standards

## Departure Decisions

Departures applications are reviewed by TII and a decision given. At the end of the review, a Departure's status is returned to the Applicant as one of the following:

**Accepted:** A Departure providing an acceptable solution in the particular circumstances for that element of the works provided that any mitigation measures proposed by the Designer or conditional to that acceptance are also incorporated into the design and works

**Refused:** A Departure that is unacceptable to TII. The Applicant may submit a new Departure Application with an alternative solution.

**Rejected:** A Departure with insufficient, inappropriate, or contradictory information where it is not possible for TII to form a conclusive decision to Accept or Refuse. The Applicant has the option to provide additional information to address the reasons for rejection and resubmit if they so wish.



# Recent changes to the Departures Portal

## Inclusion of Relevant Road Authority Contact

Departure No. 27455

Location Details    Departure Centre Point    **Application Details**    Departure Information

**Applicant Name** RPS | Consulting UK & Ireland  
**Application Status** Submitted  
**Your Reference** DEP-N59-HD-2022

**Owner** James McHale - james.mchale@rpsgroup.com  
**Contact Name** James McHale  
**Contact Phone**  
**Contact Email** james.mchale@rpsgroup.com

Transfer

### Relevant Road Authority Contact

**Company Name** Mayo NRDO  
**Contact Name** Marian McHugh  
**Contact Email** mmchugh@regdesign.com

### Employer's Representative

**Company Name** Roughan & O'Donovan  
**Contact Name** Gareth Mitchell  
**Contact Email** gareth.mitchell@rod.ie

## Standardised user group naming

The Departures Manager will set up user groups after liaison with the applicant and the TII team lead to agree a user group name.

1. Most user groups will be named as per the project/scheme.
2. HD 15HCL and HD 17 Road Safety Inspection Schemes will be added to the relevant county safety group e.g., Clare County Council Road Safety Schemes.
3. VRS assessments departures shall be named “VRS assessment:company name” and only that company shall have access to its own group.
4. VRS departures for the omission of a road safety audit under the safety stream and the submission of a DR as per 03079 under the REQ stream will be placed in the user group:VRS Programme, only the consultants who hold the current contract for this work are to have access.
5. Schemes within MMaRC areas are to be discussed with the leaders of the MMaRC areas in TII and placed in the relevant MMaRC user group or set up as a distinct user group for the project if required.

# Notifications are more detailed with user group and description included

TII Systems Notification TII Email Agent - Depart... Thu 28/04/2022 16:15 29 KB  
Departure number 27454 has been submitted in user group MMarC Area A, please assign to a TII Team Lead. The departure can be viewed here <<https://inet.tii.ie/departures/departure/0>>

TII Systems Notification TII Email Agent - New E... Thu 28/04/2022 15:42 30 KB  
The employers rep has made a comment on departure number 27452 in user group N5 Westport to Turlough Road Project, please assign to a TII team lead. The departure can be viewed here

TII Systems Notification TII Email Agent - Depart... Thu 28/04/2022 11:20 30 KB  
Departure number 27429 in user group Task Order 326 – Kerry and Cork Bridges – VRS and Expansion Joint Contract 2022 has been returned to [infodeps@tii.ie](mailto:infodeps@tii.ie) to provide a response to the

## Location can be chosen on a map and coordinates are auto populated

New Departure

Location Details | **Departure Centre Point** | Application Details | Departure Information | Standards Information | Other Departures | Additional Information | Comments | Documentation

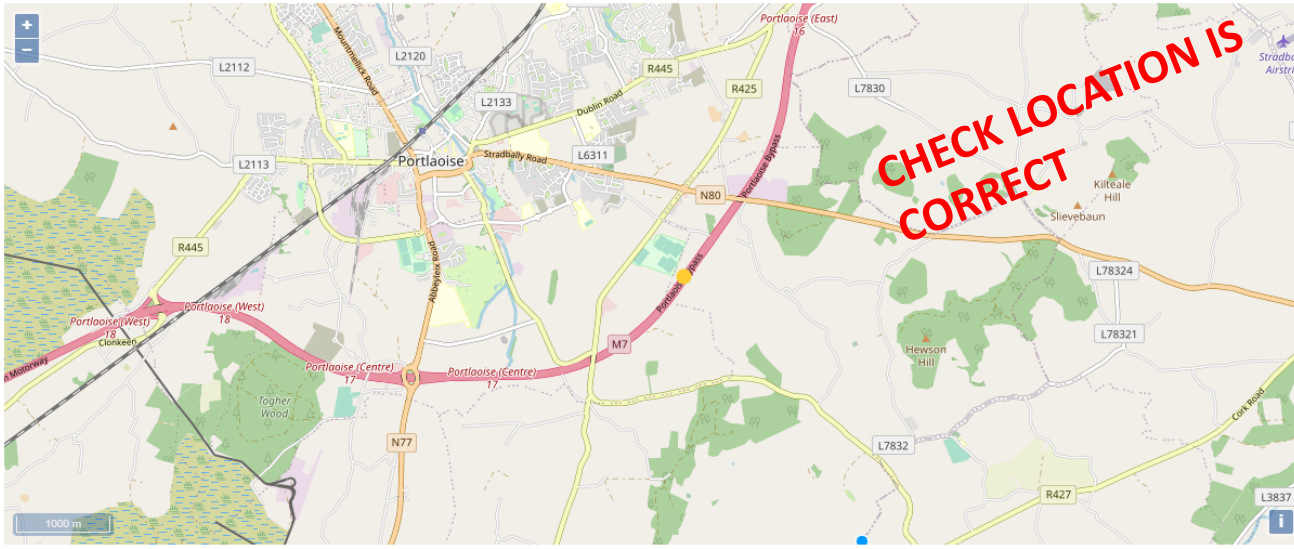
Location Data Type  
Irish National Grid References

Latitude  
197179.85272860003

Longitude  
249644.85979975713

Is Mainline

Location Description



1000 m

Park Submit Cancel



## Departure from Standards

Click the button below to log on.

Log On

# Registration

Email [infoDEPS@tii.ie](mailto:infoDEPS@tii.ie) to request access



CHECK JUNK MAIL FOR  
MICROSOFT INVITATION

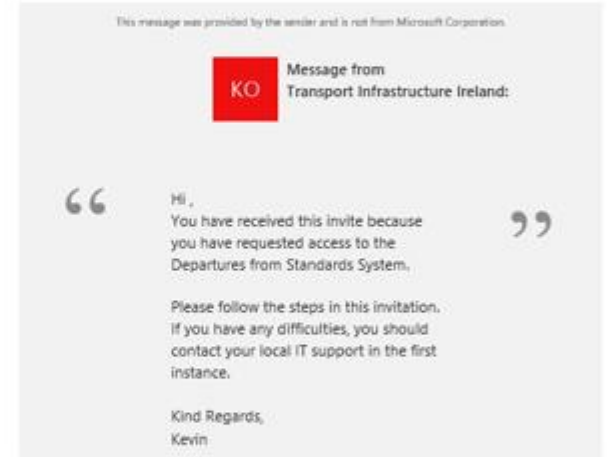


BEWARE OF FAKE  
EMAILS!

From: Microsoft invitations on behalf of Transport Infrastructure Ireland <[myites@microsoft.com](mailto:myites@microsoft.com)>  
Sent: Tuesday 10 May 2022 12:15  
To: [REDACTED]  
Subject: Transport infrastructure ireland invited you to access applications within their organization

ⓘ Please only act on this email if you trust the organization represented below. In rare cases, individuals may receive fraudulent invitations from bad actors posing as legitimate companies. If you were not expecting this invitation, proceed with caution.

Organization: Transport Infrastructure Ireland  
Domain: [tli.ie](https://tli.ie)



If you accept this invitation, you'll be sent to <https://dfs.tli.systems/>.

[Accept invitation](#)



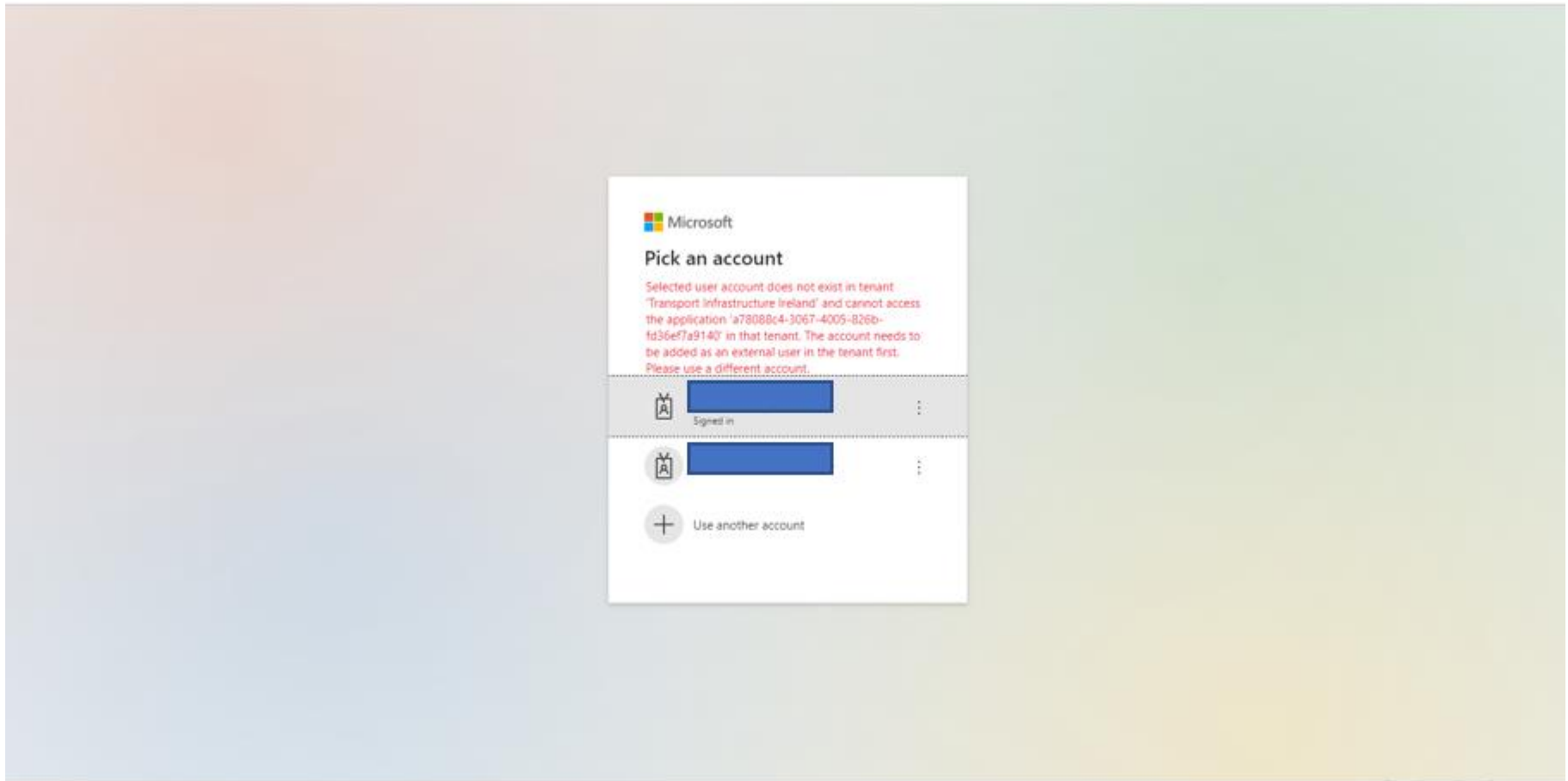
### Pick an account



Madden Esther  
Esther.Madden@tii.ie  
Connected to Windows



Use another account



Email [infoDEPS@tii.ie](mailto:infoDEPS@tii.ie) to request access

# MS365 registration

**Microsoft**

## Get back into your account

We're sorry

You can't reset your own password because password writeback (how your password changes in the cloud are copied to your organisation's on-premises system) isn't turned on for your organisation.

You must [contact your administrator](#) to both reset your password and check your organisation's setup.

Show additional details

Contact your organisation's IT department as it may be blocking departures portal



## User group/scheme name not listed or error shown

The screenshot shows a web application interface for creating a new departure. The left sidebar contains navigation options: Administration, Home, Work List, New, Recent, Recent Accepted, and Search. The main content area is titled 'New Departure' and has three tabs: 'Location Details', 'Departure Centre Point', and 'Application Detail'. The 'Application Detail' tab is selected. A dropdown menu is open, displaying three options: '(None)', 'North West Bridges Term Maintenance Contract Nr.3', and 'TII121\_M50 Traffic Flow Optimisation (MTFO) Civil/Structur...'. To the right of the dropdown is a 'Local/Regi' label. Below the dropdown are fields for 'County' and 'Contract Type'.

Your administrator has configured the application TII Departures from Standards ('a78088c4-3067-4005-826b-fd36ef7a9140') to **block users unless they are specifically granted ('assigned') access to the application**. The signed in user 'user@domain.ie' is blocked because they are **not a direct member of a group with access**, nor had access directly assigned by an administrator. Please contact your administrator to assign access to this application.

Contact your [infoDEPs@tii.ie](mailto:infoDEPs@tii.ie) to be added to a user group or scheme

## Red Error as shown



Contact your [infoDEPs@tii.ie](mailto:infoDEPs@tii.ie) to have your organisation included

Demo of  
portal

[Departure from Standards \(tii.systems\)](#)